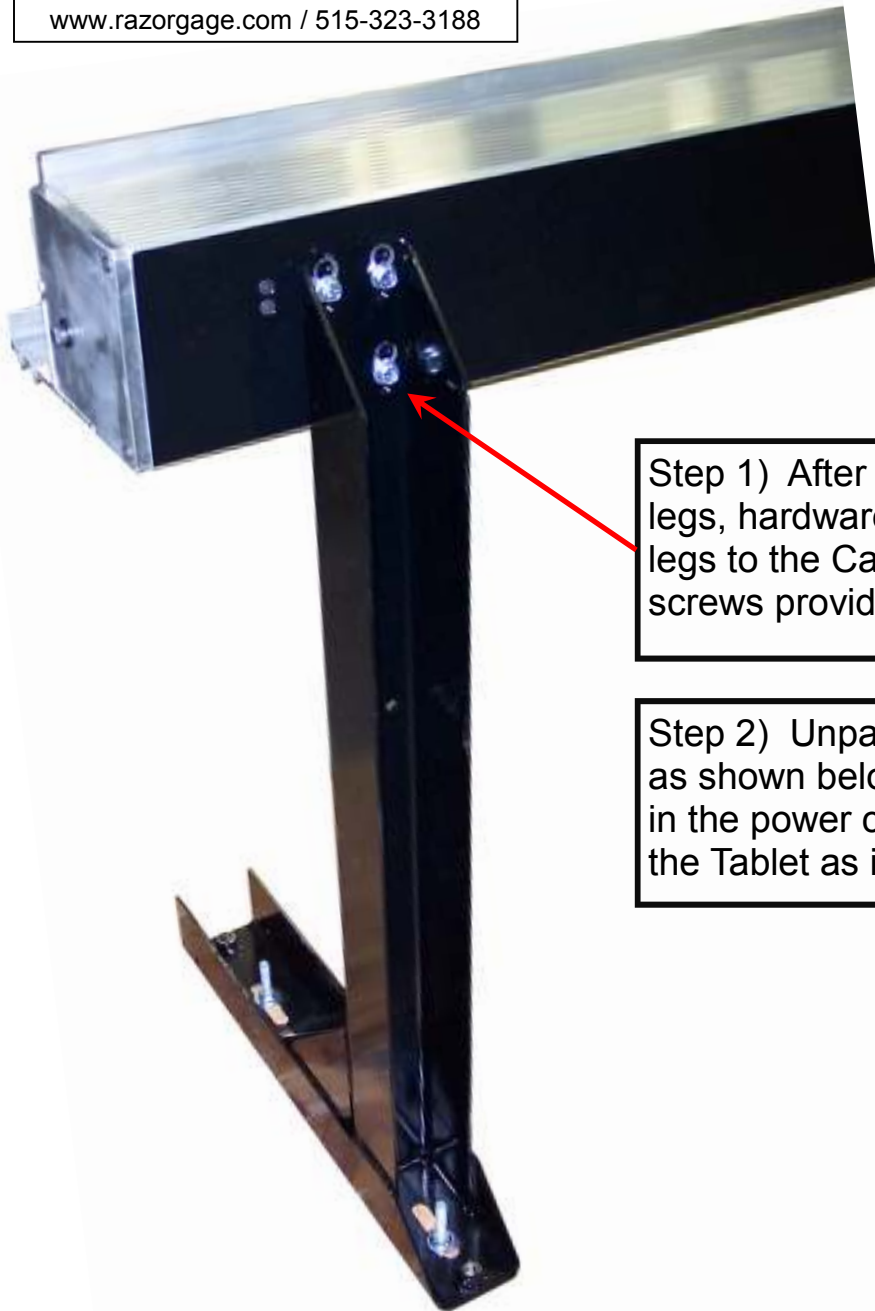
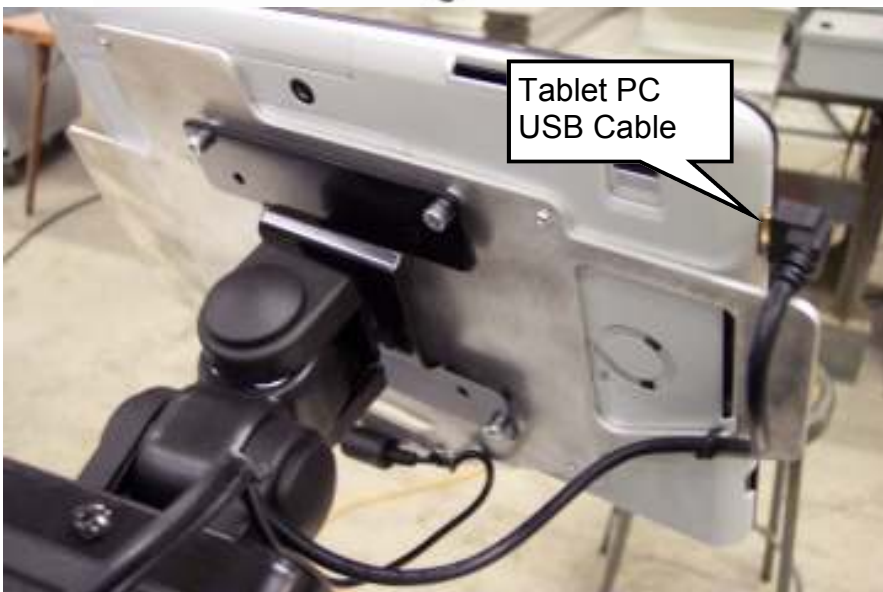


www.razorgage.com / 515-323-3188



Step 1) After uncrating the Caliper Table, legs, hardware, and PC Tablet, bolt the legs to the Caliper Table unit with the screws provided as shown at left.

Step 2) Unpack the tablet PC and mount as shown below left and right. Then plug in the power cable and the USB cable into the Tablet as indicated.

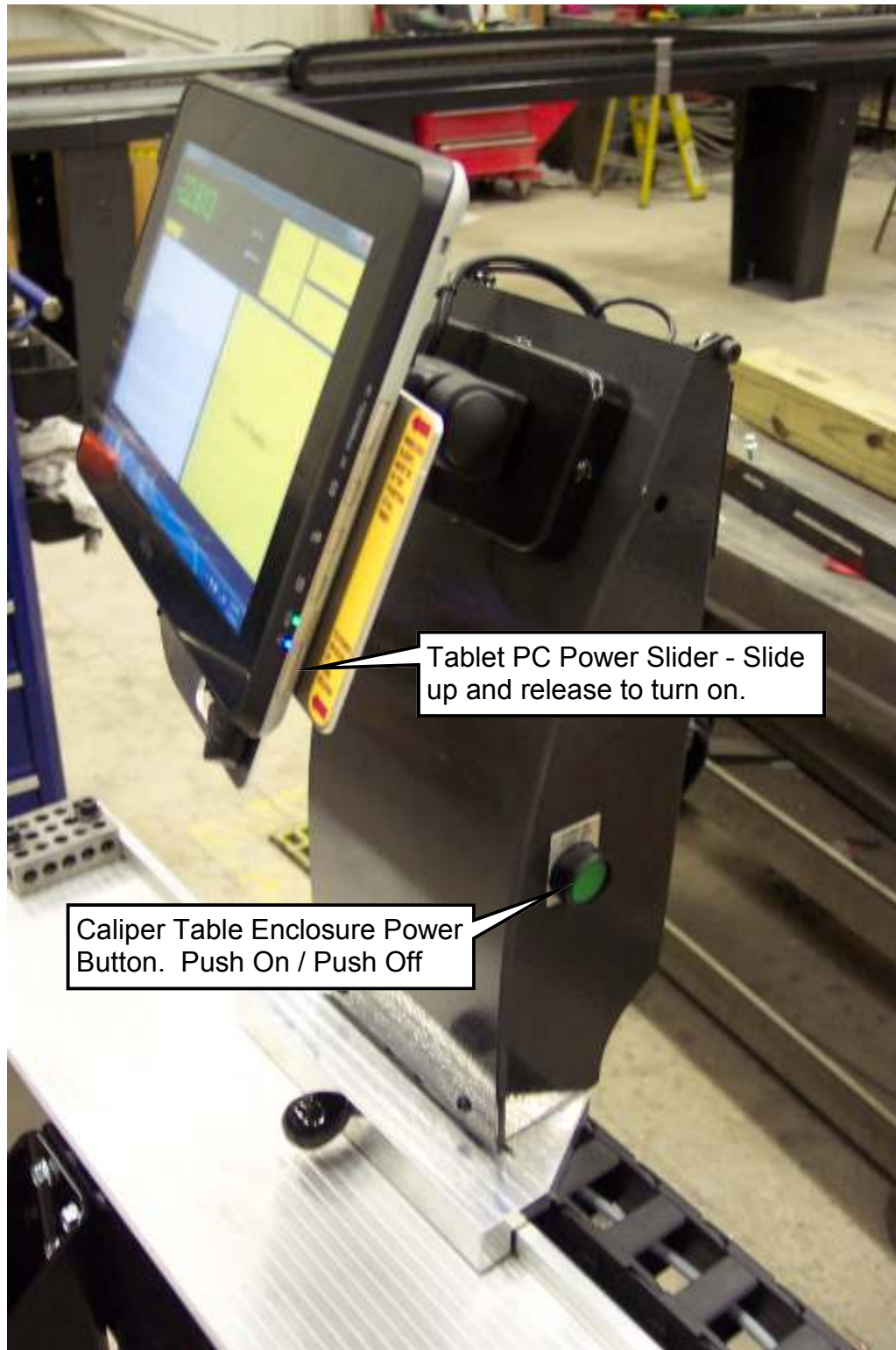


Tablet PC  
USB Cable



Tablet PC  
Power Cable

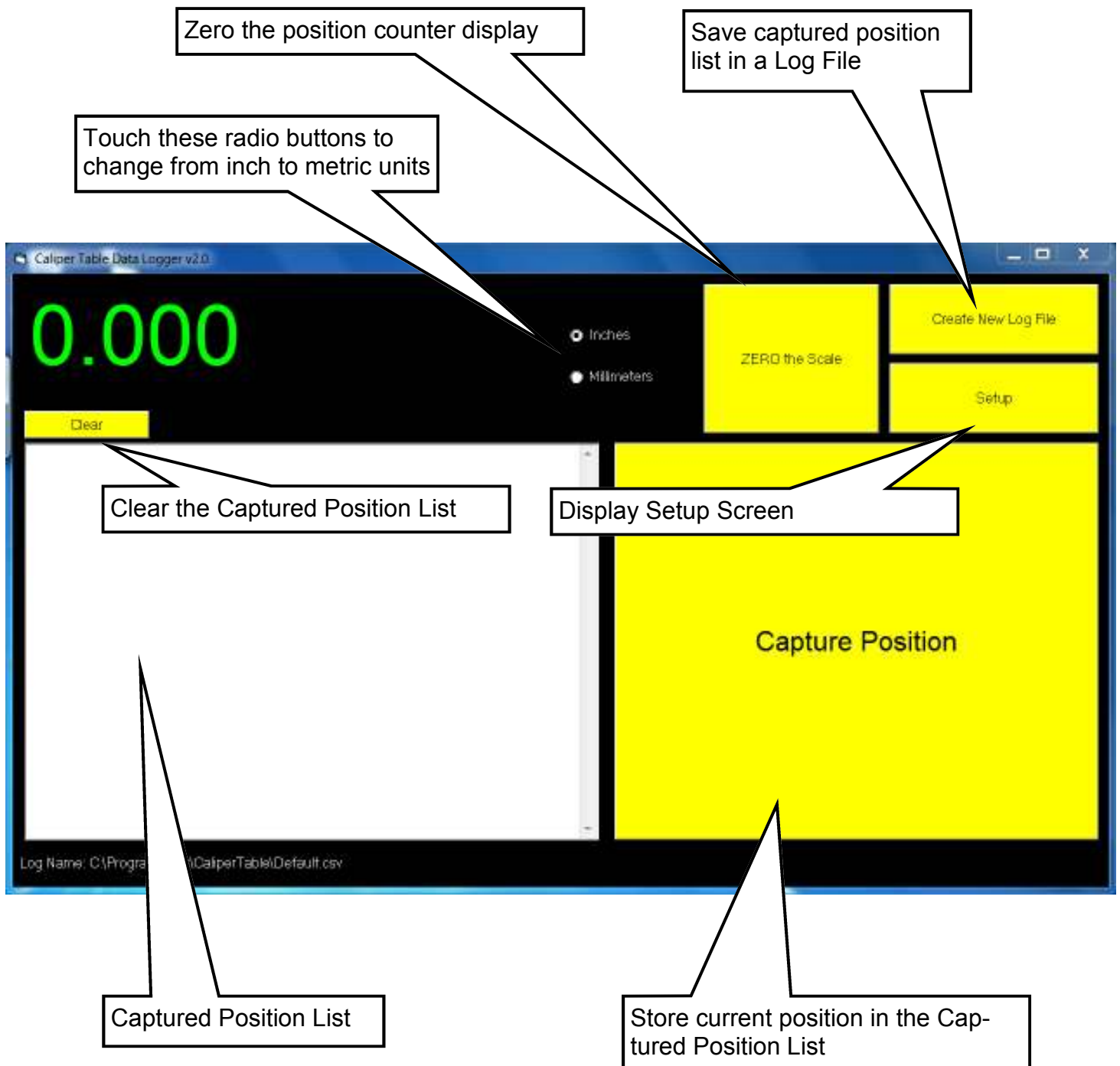
Step 3) Locate the main power cable that runs through the flexible track on the back of the machine and plug it into a s110 VAC outlet. Make sure the power strip on the back of the tablet enclosure is turned on. Then turn on the enclosure power and then power up the PC tablet using the controls labeled below.

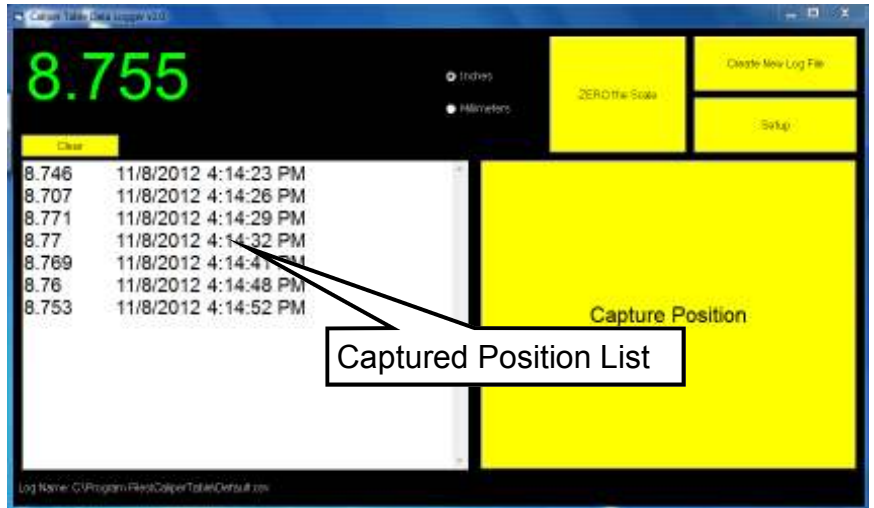


Tablet PC Power Slider - Slide up and release to turn on.

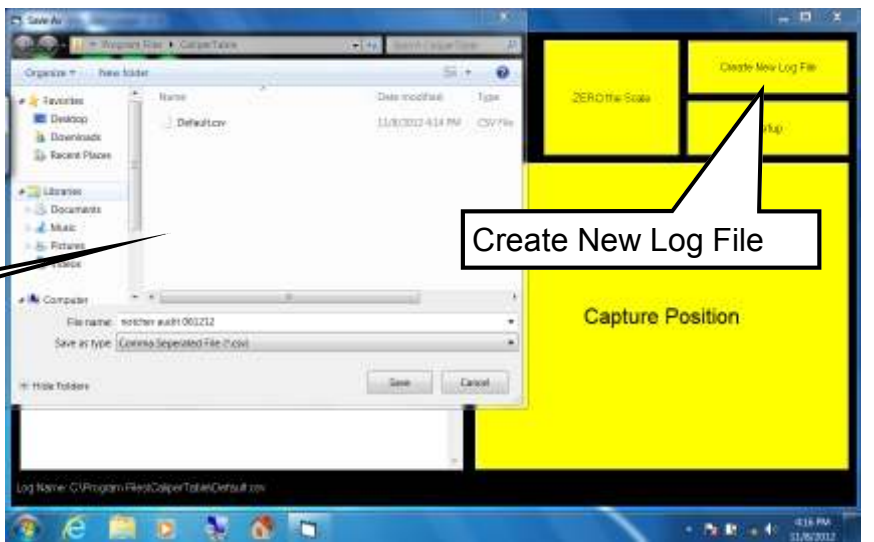
Caliper Table Enclosure Power Button. Push On / Push Off

Once the tablet PC is booted up, double click the Caliper Table icon on the Windows desktop. The software will load and you should see the screen below. Use the knob on the front of the slide to move the carriage against the stop block and press the ZERO the Scale button on the screen. Your caliper table is now ready to use. The callouts below indicate other functions available on the main screen. The following pages explain the Log File and Setup buttons.





When you press the **Capture Position** button, the current measurement is stored in the list indicated at right. Press the **Create New Log File** button to save the list of measurements to a file. The file can be saved anywhere you want, even on a network drive if you use the Caliper Table Tablet's built in WiFi to connect to your network.



Save the log file locally or on your network.

Setup Screen

Change the scale factor to improve the accuracy of the unit. Double click the Scale-Factor icon on the Windows Desktop or download the Scale Factor application from [www.razorgage.com](http://www.razorgage.com) to assist you in making corrections.

The Raw Receive window is used for diagnostics. It shows the messages being sent and received to the encoder board.

