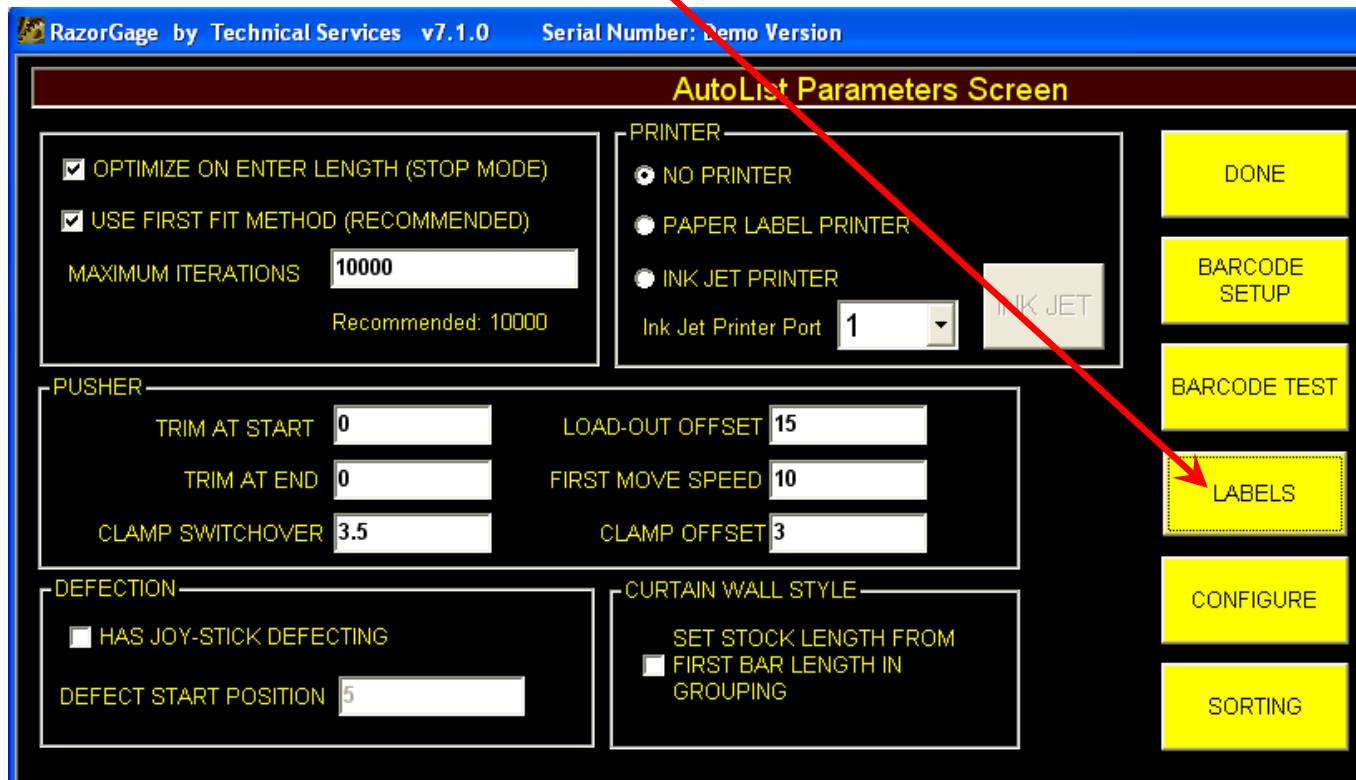
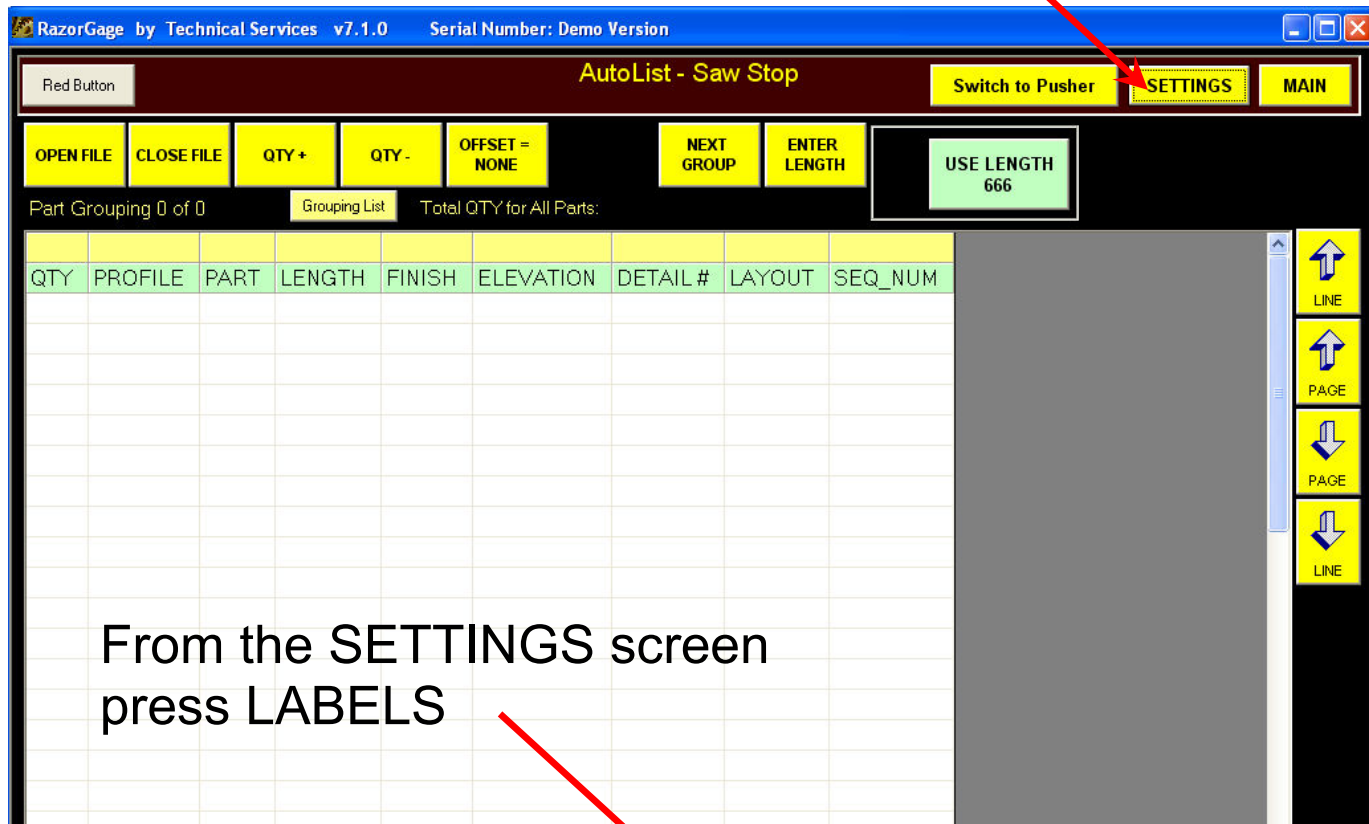


RAZORGAGE

POSITIONERS • SOFTWARE • SYSTEMS

Paper Label Printing in Autolist

From the Autolist Screen
press SETTINGS



This value represents the number of blank lines at the top of the label. This is essentially the top margin.

This value is used when optimizing between defects in pusher mode. The "gap" refers to the distance between the end of one part and the beginning of the next when a defect separates the parts. This is handy when defects may not be conspicuous and a drop may be confused with an actual part if it is longer than the specified length.

Check this box to enable label printing.

Adjust this value to make the left margin larger or smaller.

Set font size here.

Press to print a test label.

| | FIELD 1 | FIELD 2 | FIELD 3 |
|--------|---------|---------|-----------|
| LINE 1 | PROFILE | EMPTY | EMPTY |
| LINE 2 | PART | EMPTY | EMPTY |
| LINE 3 | EMPTY | EMPTY | EMPTY |
| LINE 4 | EMPTY | EMPTY | FILE NAME |

This is the font size used in the Virtual Label which appears in the lower left hand corner of the Autolist Screen.

Each pull down field will show a list of all the headings available in the cutlist plus the FILE NAME heading which prints the name of the cutlist file.

These blank fields hold user entered text or characters that remain the same regardless of the part. They are filled in at the machine using a keyboard. They can hold a long string even though they appear to be short and the software will handle spacing of the fields regardless of the length. If the label is too long for the label it will be shortened to fit.

To Include Bar Code Fields in your Label

From the Label Setup screen click Bar Code to bring up the bar code screen shown below.

Label Setup

PRINT LABELS

Paper Label Printer

FONT SIZE 11 Left Margin Spaces 4 Blank Lines 1

(Pusher Mode Only) Print "NOT BEING USED" when gap exceeds: 5.26

Text Labels Bar Codes

Printed Fields

| | FIELD 1 | FIELD 2 | FIELD 3 |
|--------|---------|---------|---------|
| LINE 1 | PROFILE | EMPTY | EMPTY |
| LINE 2 | PART | EMPTY | EMPTY |
| LINE 3 | EMPTY | EMPTY | EMPTY |
| LINE 4 | EMPTY | EMPTY | EMPTY |

VIRTUAL LABEL FONT SIZE 15

SAVE CANCEL

PRINT LABELS

Paper Label Printer

FONT SIZE 11 Left Margin

(Pusher Mode Only) Print "NOT BEING USED" when gap exceeds: 5.26

Text Labels Bar Codes

Printed Fields

| | Field | X (in) | Y (in) | X-distance from left border | Y - distance from top of label |
|------------|---------------|--------|--------|-----------------------------|--------------------------------|
| Bar Code 1 | FILE NAME | 1 | 1.1 | | |
| Bar Code 2 | FILE NAME | 1.2 | 2 | | |
| | SEQ_NUM | | | | |
| | QTY | | | | |
| | PROFILE WIDTH | 12 | | | |
| | THICKNESS | | | | |
| | PART LENGTH | | | | |

SAVE CANCEL

You may have two barcode fields on the label. Click in one of the bar code pull down menus to display all the field headings from your cutlist. Click the heading of the field you would like to be printed in bar code font.

Label Setup

■ PRINT LABELS

Paper Label Printer

FONT SIZE
 Left Margin Spaces
 Blank Lines

(Pusher Mode Only) Print "NOT BEING USED" when gap exceeds:

Printed Fields

| | Field | X (in) | Y (in) | |
|------------|--|----------------------------------|----------------------------------|--------------------------------|
| Bar Code 1 | <input type="text" value="FILE NAME"/> | <input type="text" value="1"/> | <input type="text" value="1.1"/> | X-distance from left border |
| Bar Code 2 | <input type="text" value="ELEVATION"/> | <input type="text" value="1.2"/> | <input type="text" value="2"/> | Y - distance from top of label |

Bar Code Font Size

This value controls the barcode font size.

You may use the X Y coordinates to control where the bar code fields are printed on the label. You will have to experiment with these settings to make sure the bar code fields don't interfere with the fields established in the non-barcode definition area.

Important Note: For barcode printing to work you must have the proper barcode font installed on the RazorGage PC. Newer RazorGages have these fonts already in place but older ones may not. Since the RazorGage software has used two different barcode fonts over the years you should install both to be sure it works. The two fonts are 3of9.TTF and 39251.TTF. These are available for download from the RazorGage website DOWNLOADS page. There are also numerous sites on the web which allow you to download these fonts for free. To install these fonts on a PC just copy the files to C:\Windows\Fonts\