

Pairing a New Tablet with the RazorGage

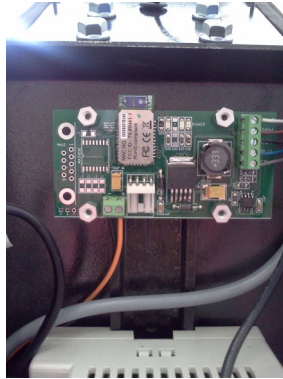
Step 1) Open the RazorGage electrical enclosure by removing the two screws indicated by the arrows and swinging the door up and over.



Danger
Live wires

Use caution inside the enclosure while power is on. Live wires present.

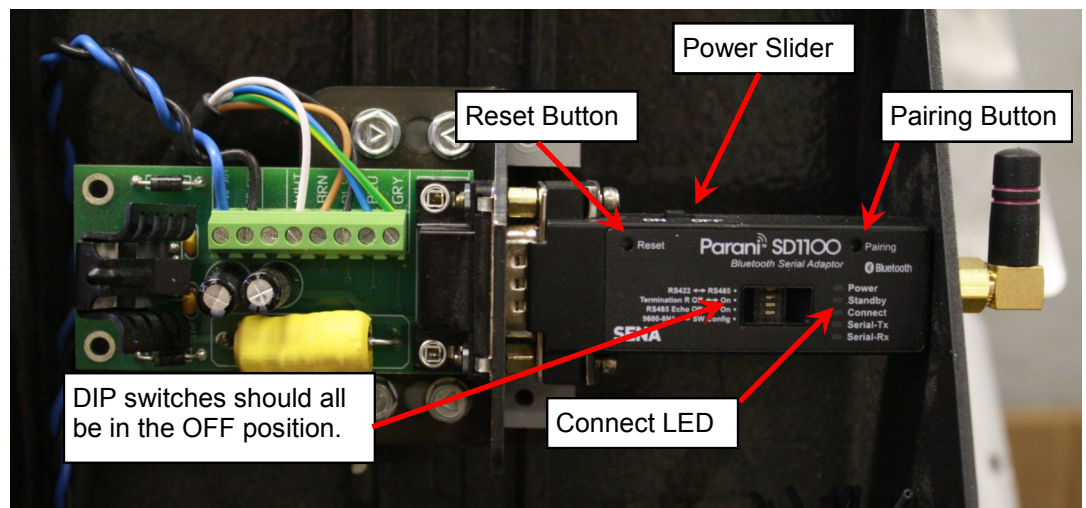
Step 2) Locate the Bluetooth Adapter. It is inside the electrical enclosure near the top. If your adapter looks like one of the examples below, **SKIP TO STEP 7.**



Step 3) If your Bluetooth adapter looks like the example below, continue to Step 4.

Step 4) Using the Power Slide switch turn the Bluetooth adapter off, wait 3 seconds and then turn it back on.

Step 5) Reset the adapter by using a paper clip to press the Reset button



Step 6) Press & hold the Pairing button for 2 seconds until the Connect LED blinks 3 times every 3 seconds. Leave the power on. The Bluetooth adapter is now ready to be discovered by your tablet.

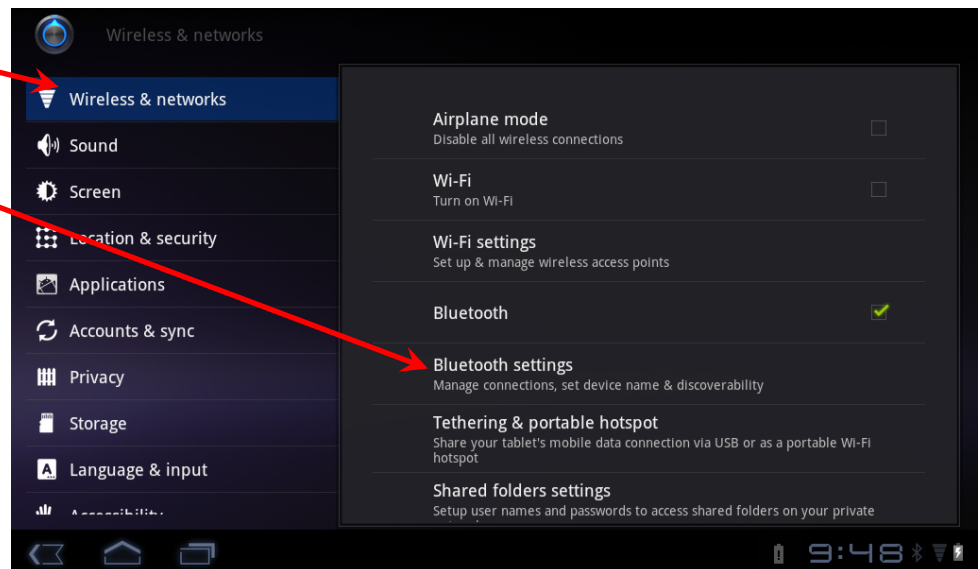
Step 7) If you're pairing with a Windows 7 tablet **SKIP TO STEP 17**

Step 8) If you're pairing with an Android tablet, make sure the RazorGage software is closed then find and click the Settings icon on the Android Desktop.

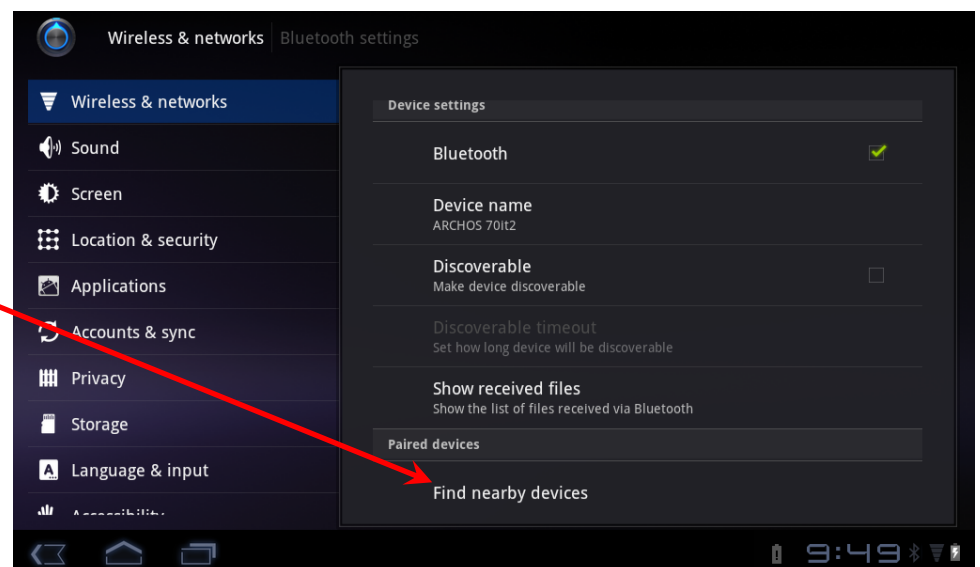


Step 9) Click Wireless & Networks

Step 10) Click Bluetooth Settings



Step 11) Click Find Nearby Devices

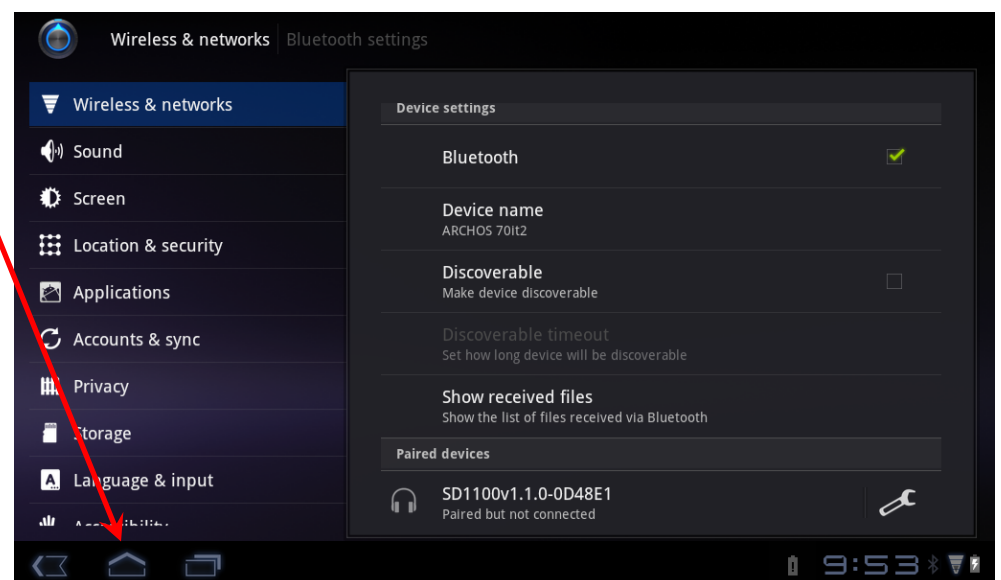
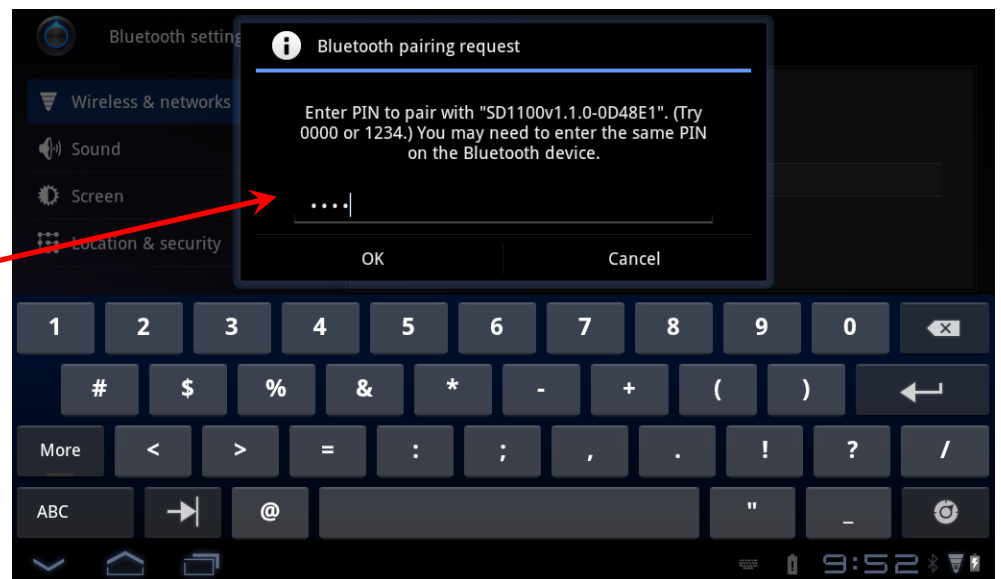
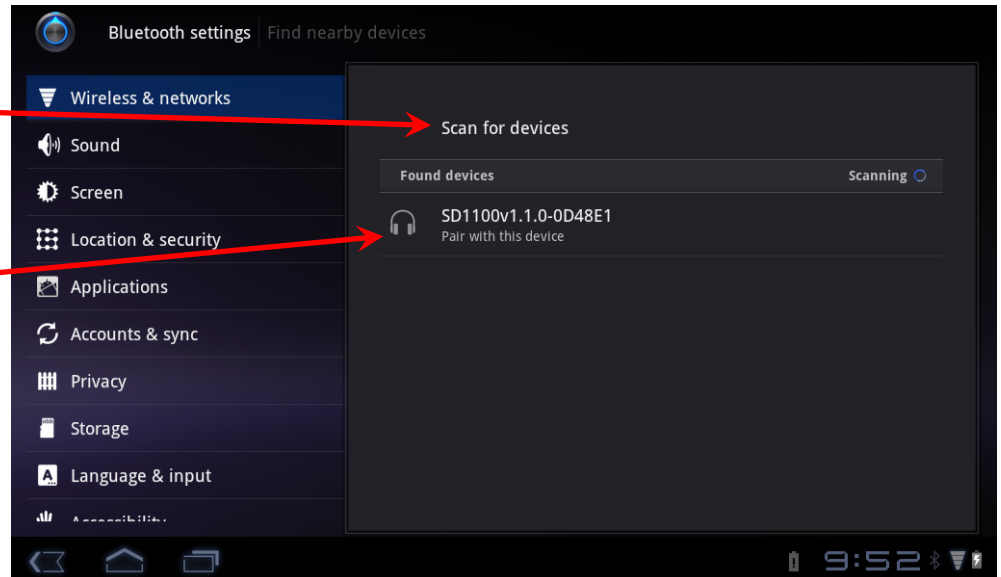


Step 12) Click Scan for Devices.

Step 13) When it finds "SD1100v...." click on that device to pair it with the tablet.

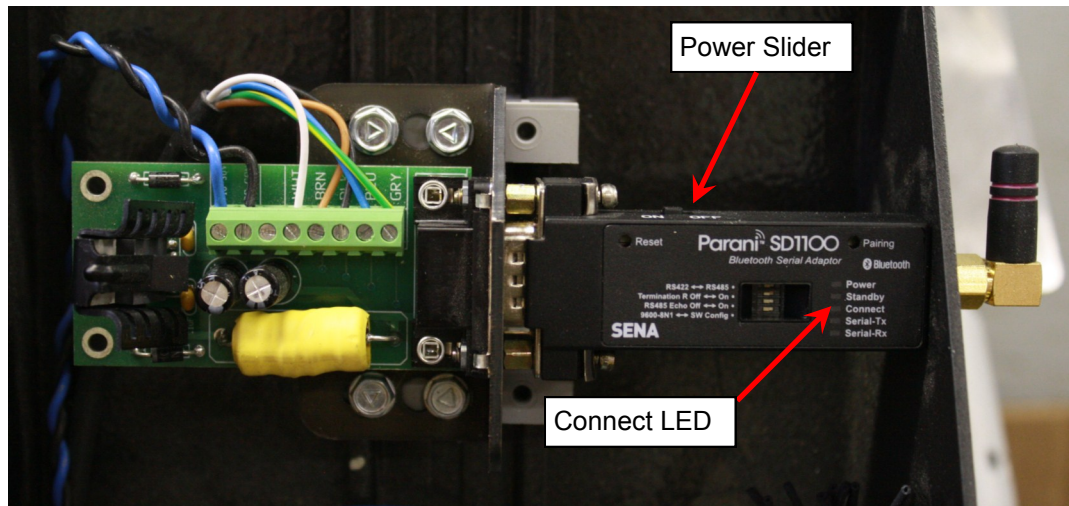
Step 14) Type in "1234" for the PIN number and click OK.

Step 15) Device should now be paired. Click the Home button to return to the Android Desktop





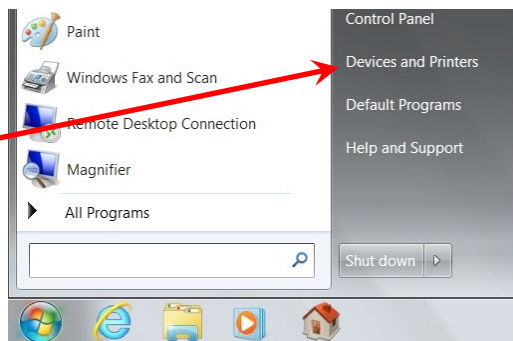
Step 16) Now look at the Bluetooth adapter inside the electrical enclosure. When it is paired with the tablet the Connect LED blinks once per second. Turn the unit off using the power slider switch then turn it back on. The Bluetooth adapter is now ready to connect with the RazorGage. Close the enclosure door and secure it with the two screws, start up the RazorGage software and it should connect. The following steps are for a Windows Tablet. If you are using an Android tablet, you are finished pairing and connecting the tablet with the RazorGage.



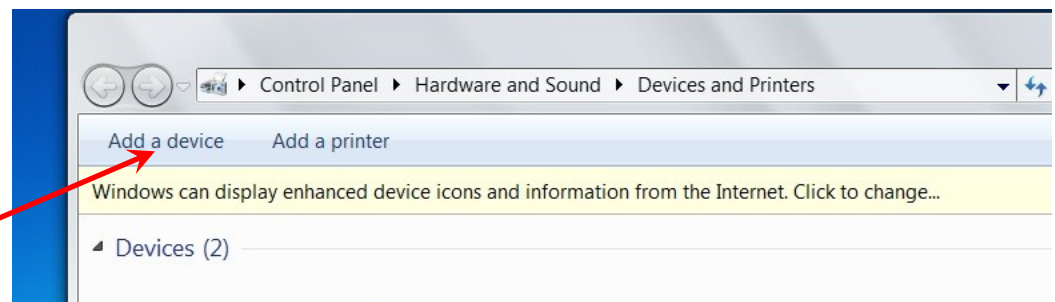
Step 17) Follow these steps for pairing and connecting with a **Windows 7 Tablet**. First verify that the Wireless switch on the right side of the tablet is in the ON position.



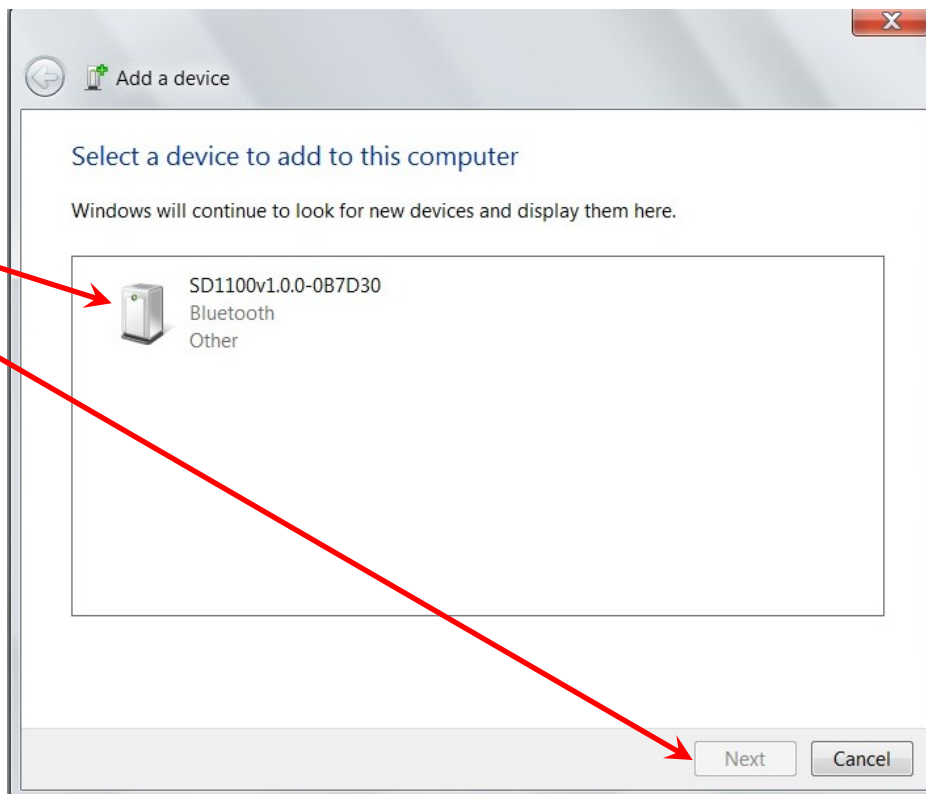
Step 18) Click the Start button in the lower left corner of the Windows desktop. Then click Devices & Printers.



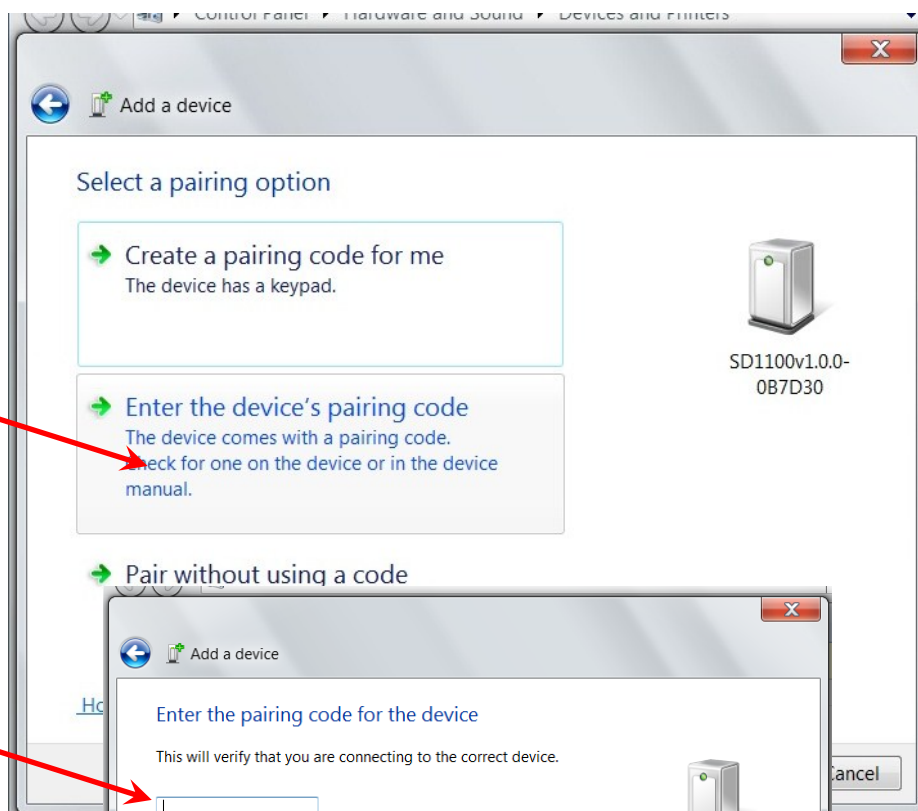
Step 19) Click Add a Device



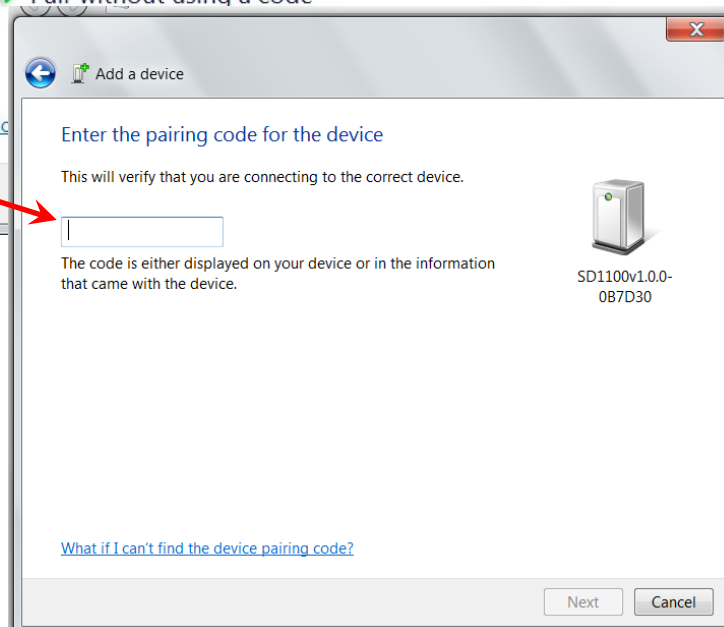
Step 20) Select SD1100v...
and click Next



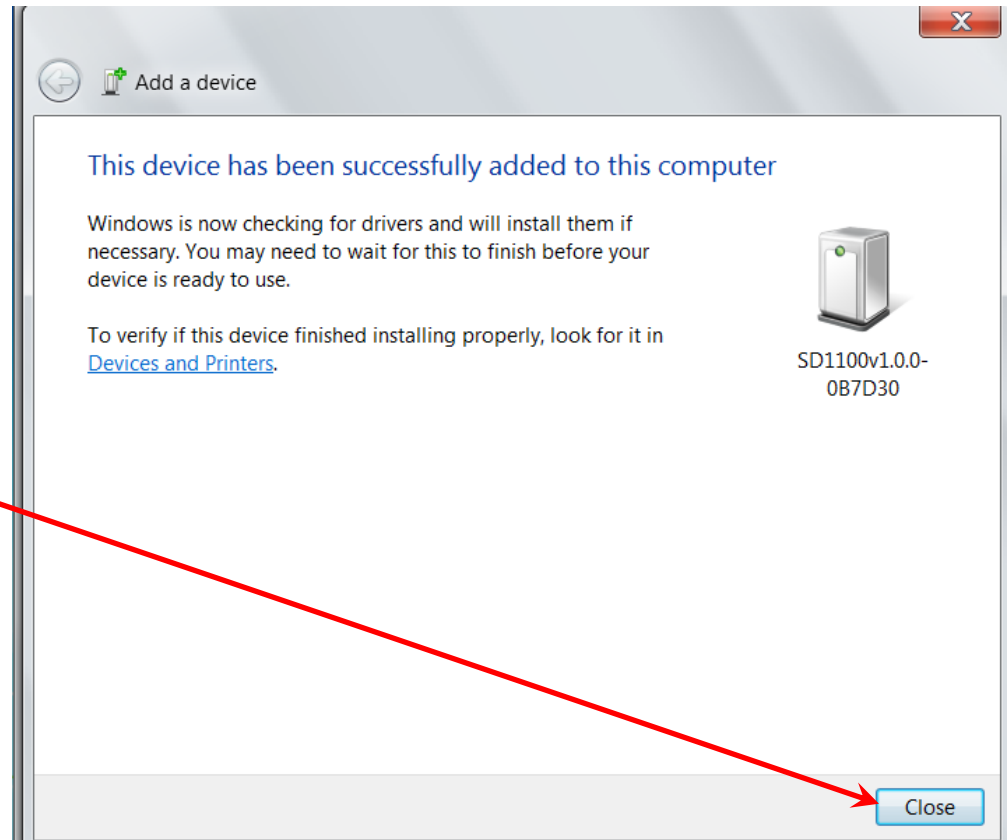
Step 21) Select Enter the
device's pairing code.



Step 22) Enter 1234 as the
code and click Next.



Step 23) Device should now be paired. Click Close.



Step 24) Now look at the Bluetooth adapter inside the electrical enclosure. When it is paired with the tablet the Connect LED blinks once per second. Turn the unit off using the power slider switch then turn it back on. The Bluetooth adapter is now ready to connect with the RazorGage. Close the enclosure door and secure it with the two screws, start up the RazorGage software and it should connect. If you are using an Windows 7 tablet, you are finished pairing and connecting the tablet with the RazorGage.

