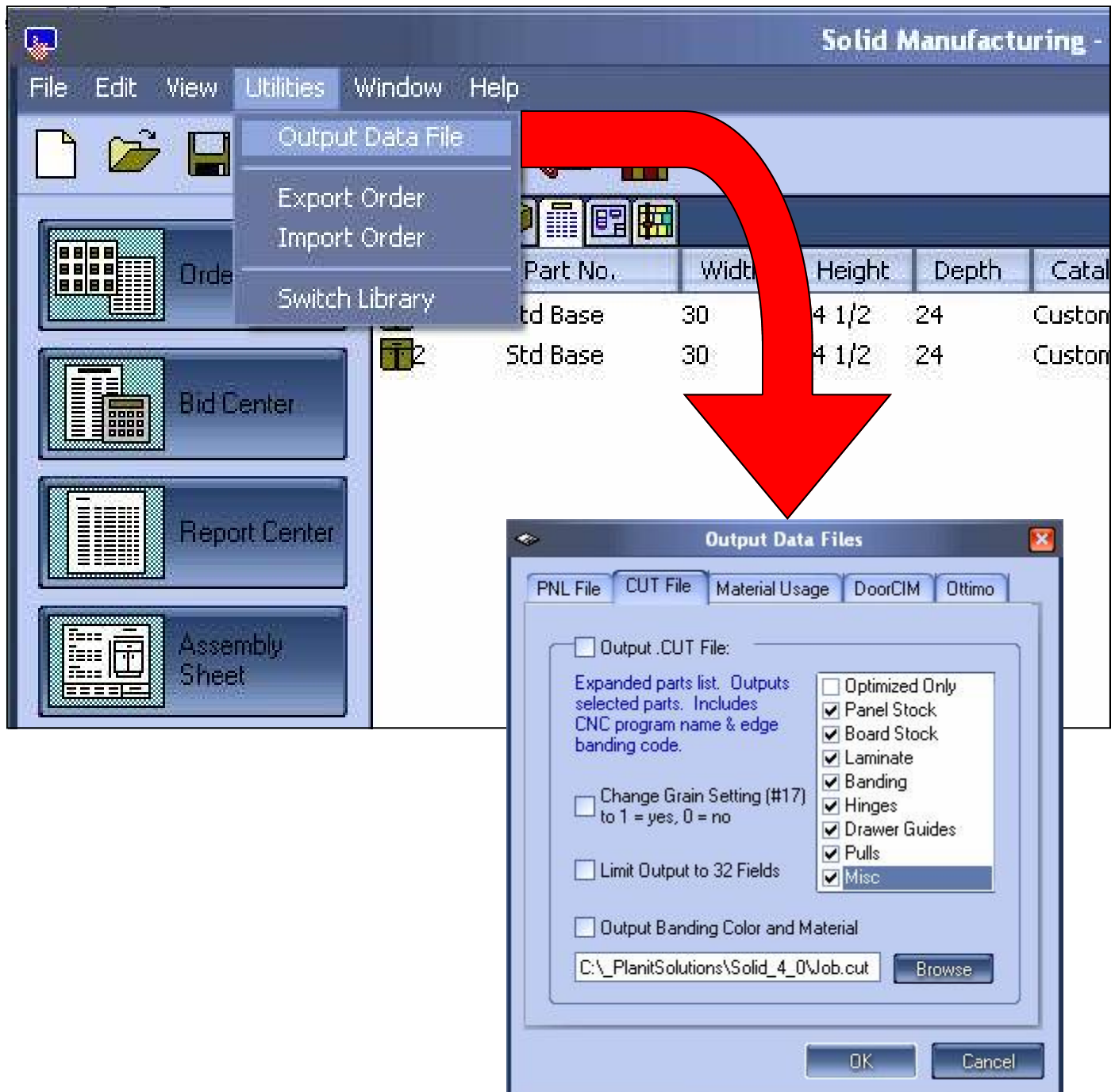


# RAZORGAGE

TOOL GRADE SAW STOPS

## How to generate a .cut file from Cabinet Vision

The "CUT" file is one of the Data Files included in the Output Data File Utility (or Conversion Utility). This utility is an add-on that is not included with the standard package. To access the utility, when in a floorplan view or wall elevation view click on icon that looks like a page of data to get to the reports section. The screen below will appear. At the top of the screen there is 'utilities' pull down menu. Top line is 'output data file'.



## How to generate an .rzg file from Cabinet Vision (V4.0 SOLID & V2.0 NC CENTER ONLY)

Make a new machine in their machining center, choose chop saw and one of the selections is RazorGage. Enter a code that you obtain from Cabinet Vision (approximate cost—\$500).

The file format is as follows:

Material Name  
Material ID  
Part Quantity  
Part Name  
Part Width  
Part Length  
Part Thickness  
Room Name  
Room ID  
Cabinet Name  
Cabinet ID  
Scribe Marks

The scribe marks are a string formatted using the pipe symbol "|" as the delimiter.

A part that needed scribe marks at 10, 12.5, 18, 19.75 would be output as: "10|2.5|5.5|1.75"

A part that had no scribe marks would be ""



SCRIBE LOCATIONS AS CALLED OUT IN A .RZG FILE