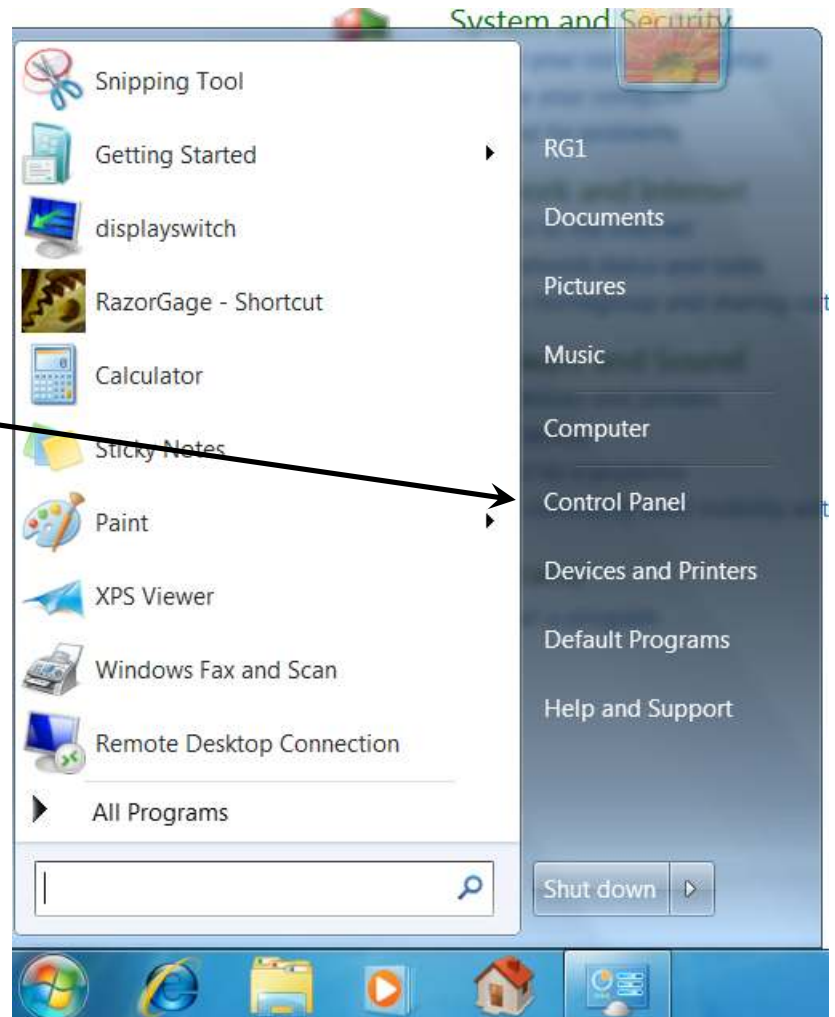


Step 1) Set NTrig Optimization. You may want to use the stylus for this as the touch screen may be erratic before performing this tuning operation.

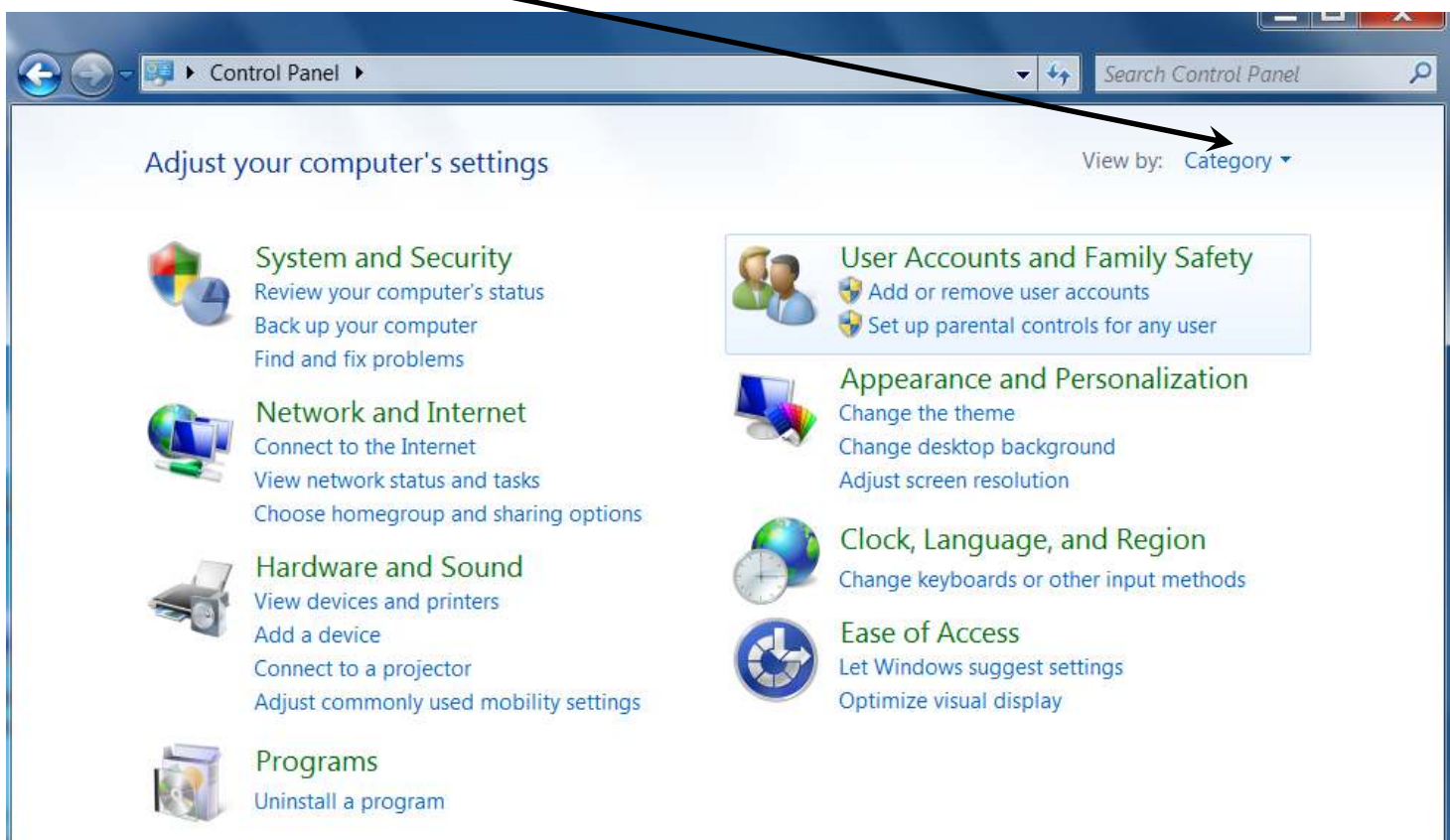
Press Start



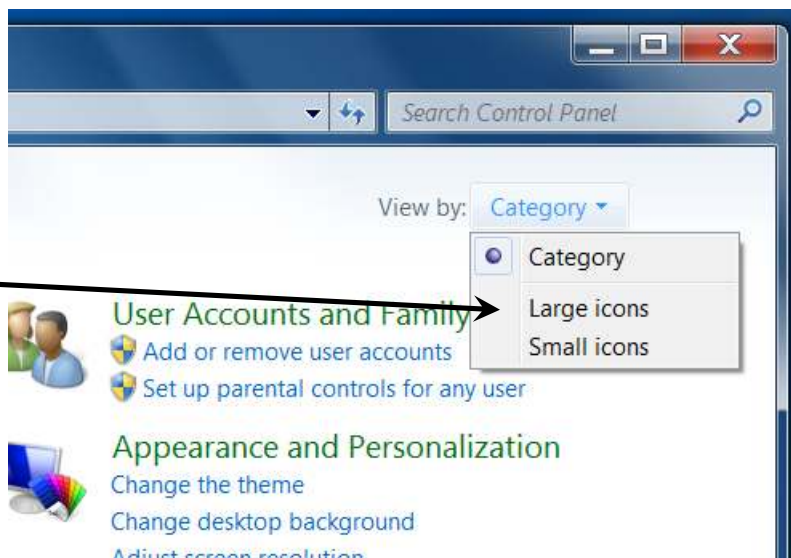
Click Control Panel



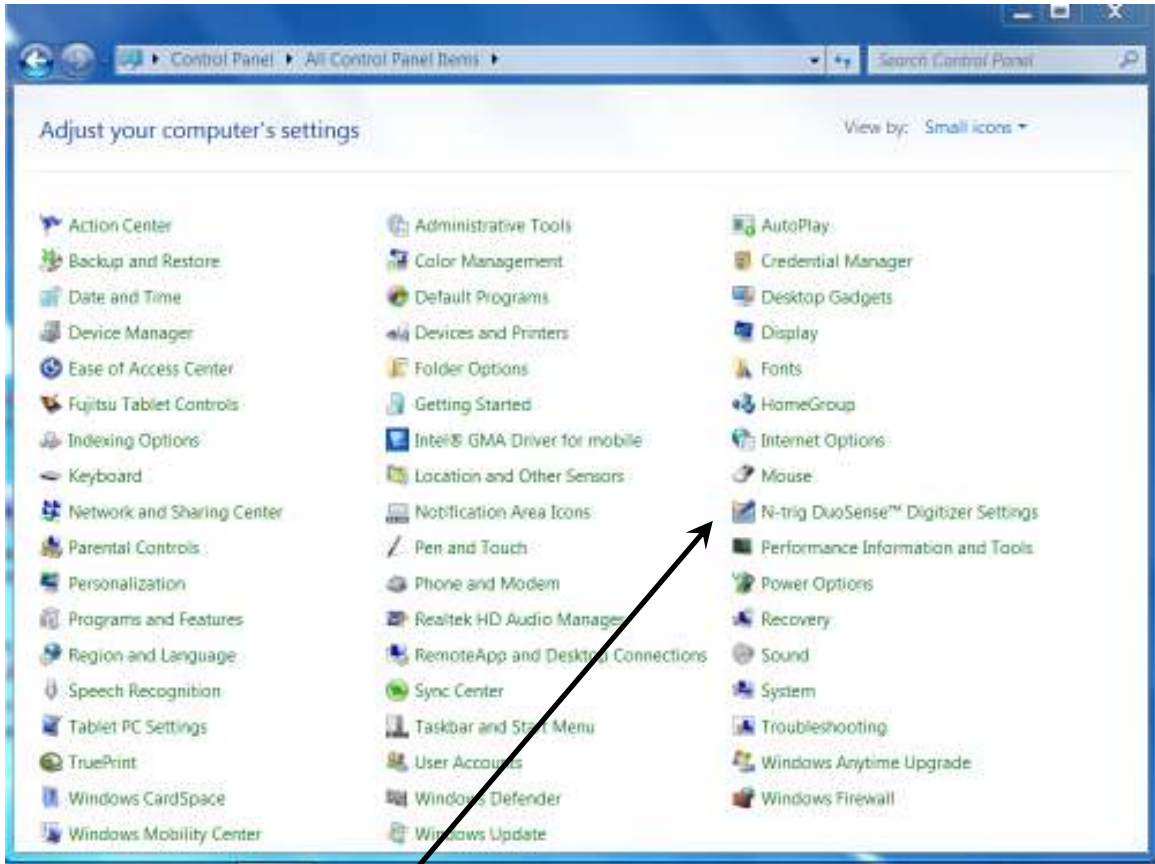
If the control panel looks like the picture below then click Category as shown here



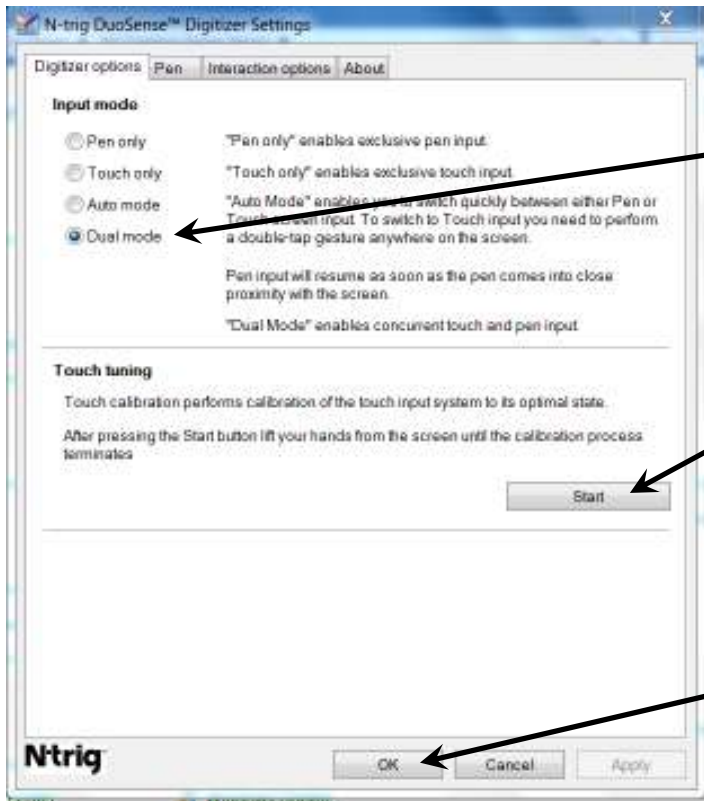
Then select Large Icons here.



The Control Panel Screen should now look like the picture below.



Click N-Trig DuoSense Digitizer Settings

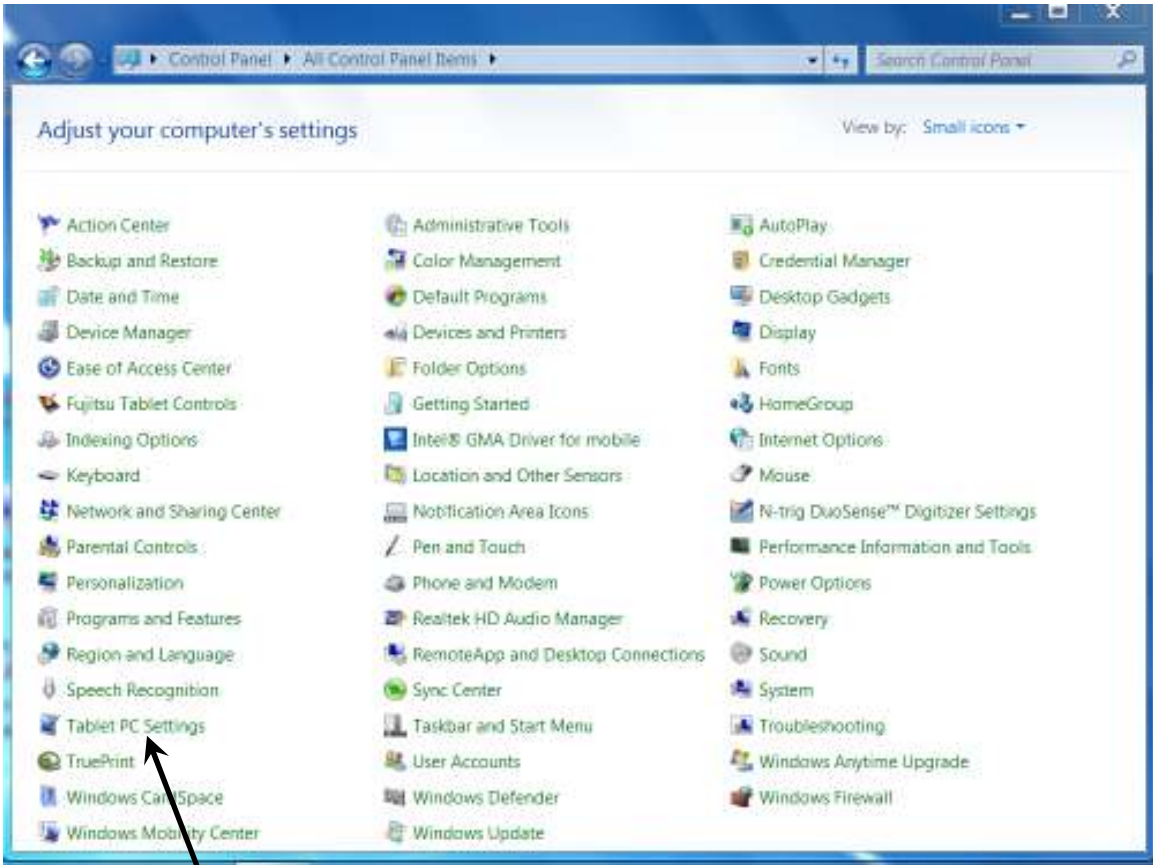


Under Input Mode click the Dual Mode option.

Click this Start button and don't touch the screen until it says it is done!

When touch tuning is complete click OK

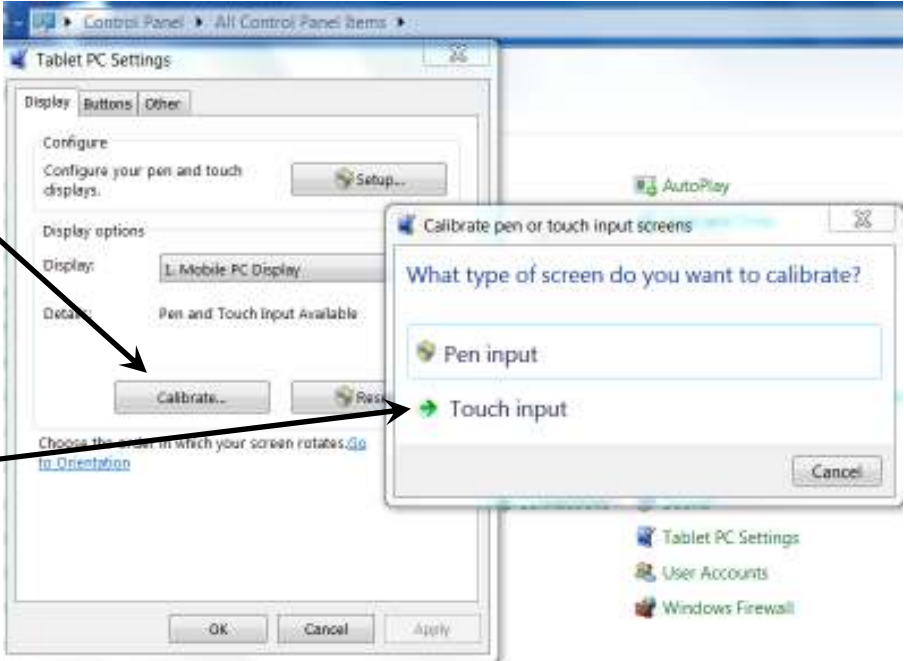
The Control Panel Screen should now look like the picture below.



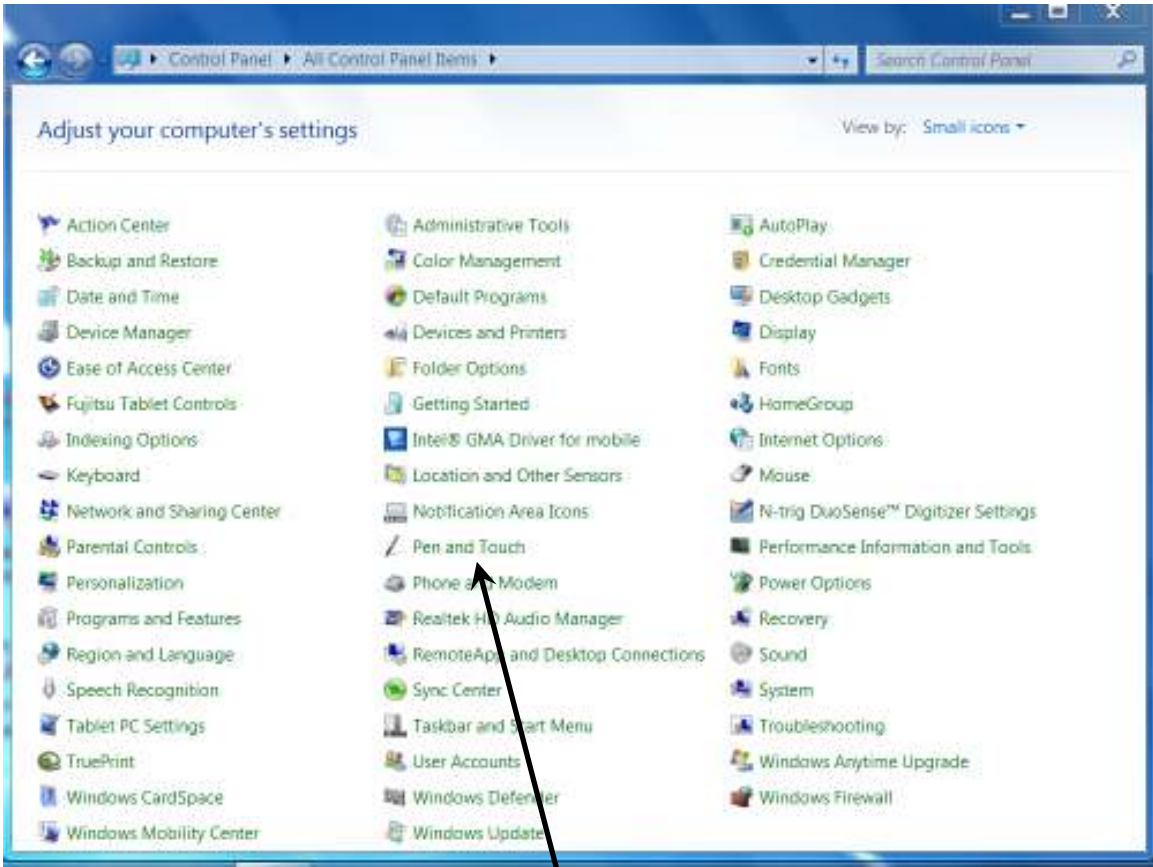
The next step is touch screen calibration. Click Tablet PC Settings

Click Calibrate...

Then choose Touch Input. The screen will go gray and lines will appear. In the upper left corner of the screen an intersection of two of the lines will have a crosshairs over it. Tap the intersection of the lines of the crosshairs and it will jump to the next intersection. Continue until calibration is done.



The Control Panel Screen should now look like the picture below.

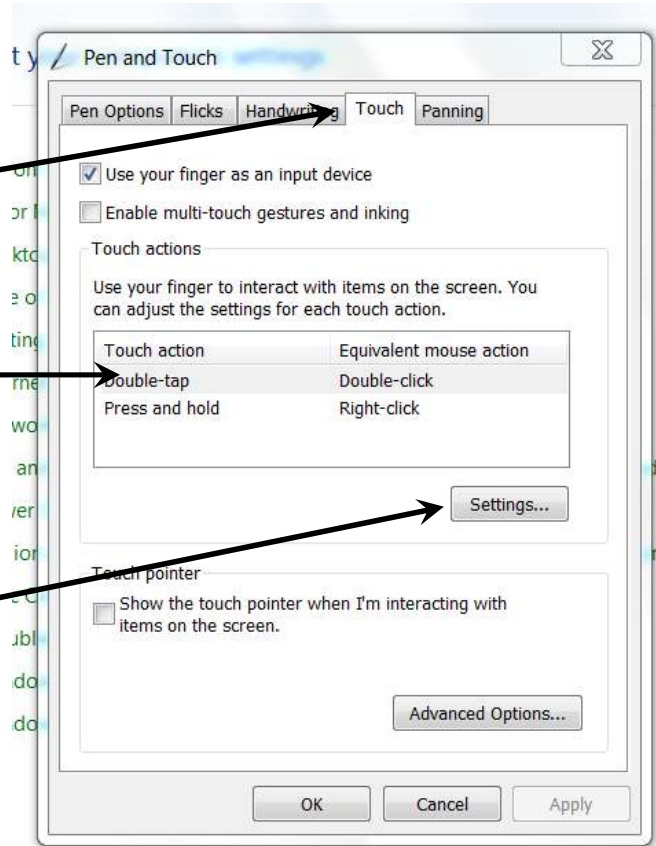


The next step is the double click setting. Click Pen and Touch

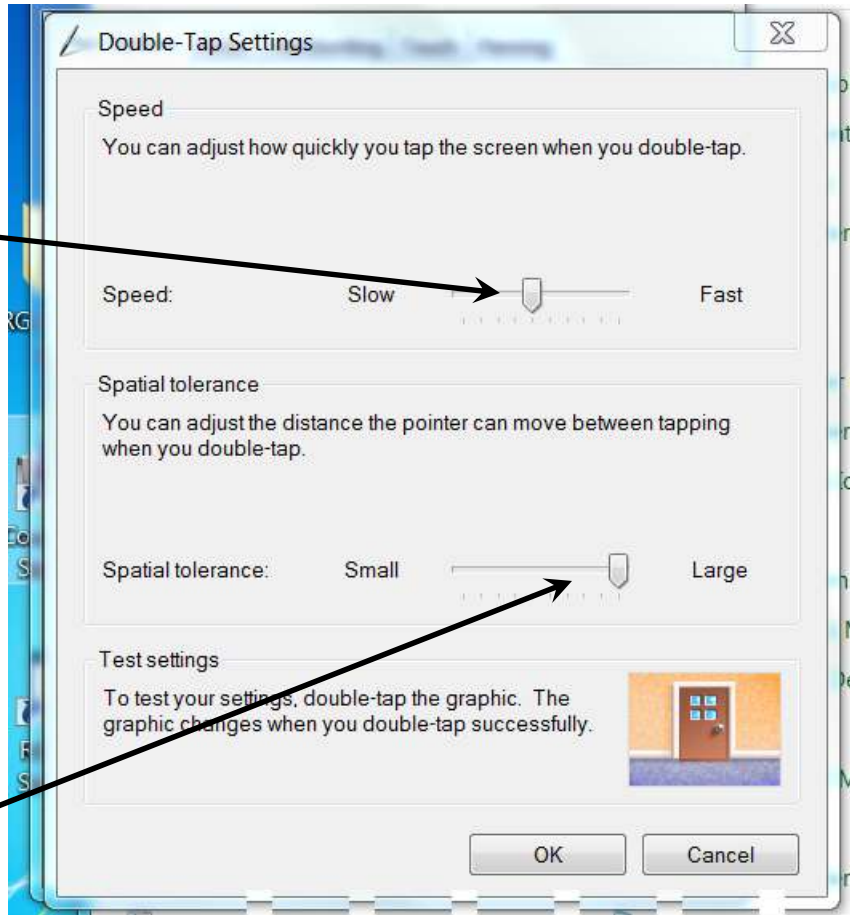
First select the Touch tab.

Then choose double tap here.

Then click Settings...

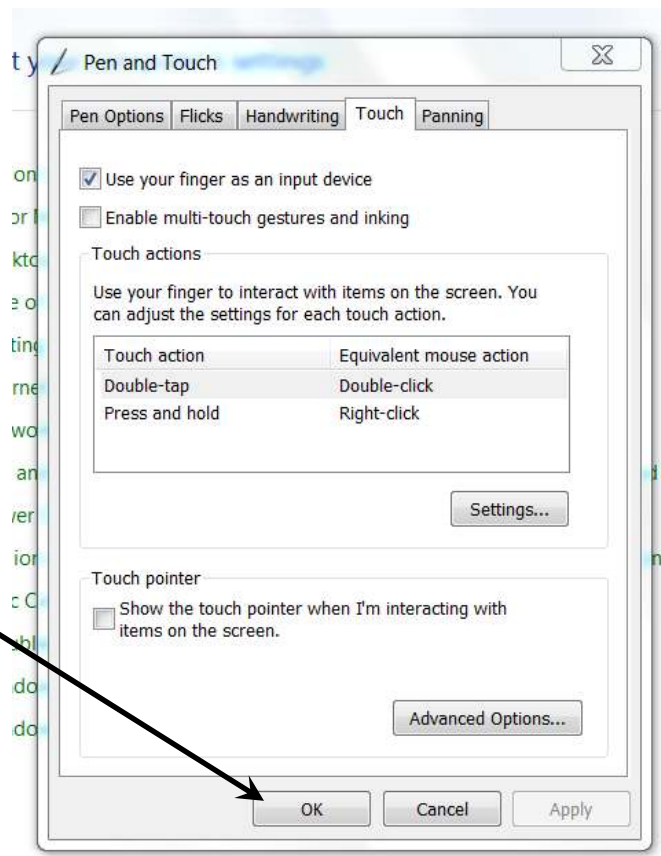


Set the Speed Slider in the middle.



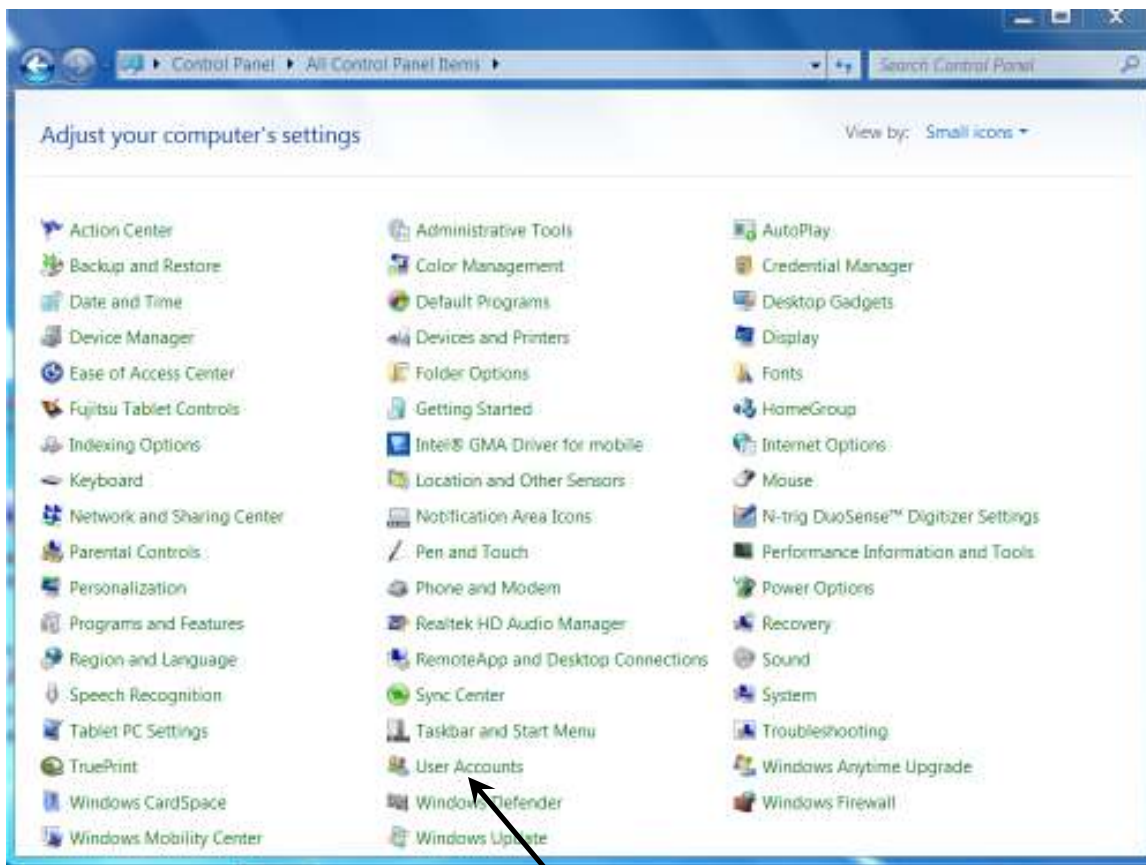
Set the Spatial Tolerance slider on Large & click OK

The Pen and Touch screen will come back. Click OK here too.



Touch action	Equivalent mouse action
Double-tap	Double-click
Press and hold	Right-click

The Control Panel Screen should now look like the picture below.



Now click User Accounts



Then click User Account Control Settings.

Choose when to be notified about changes to your computer

User Account Control helps prevent potentially harmful programs from making changes to your computer.

[Tell me more about User Account Control settings](#)

Always notify



Never notify

Never notify me when:

- Programs try to install software or make changes to my computer
- I make changes to Windows settings



Not recommended. Choose this only if you need to use programs that are not certified for Windows 7 because they do not support User Account Control.

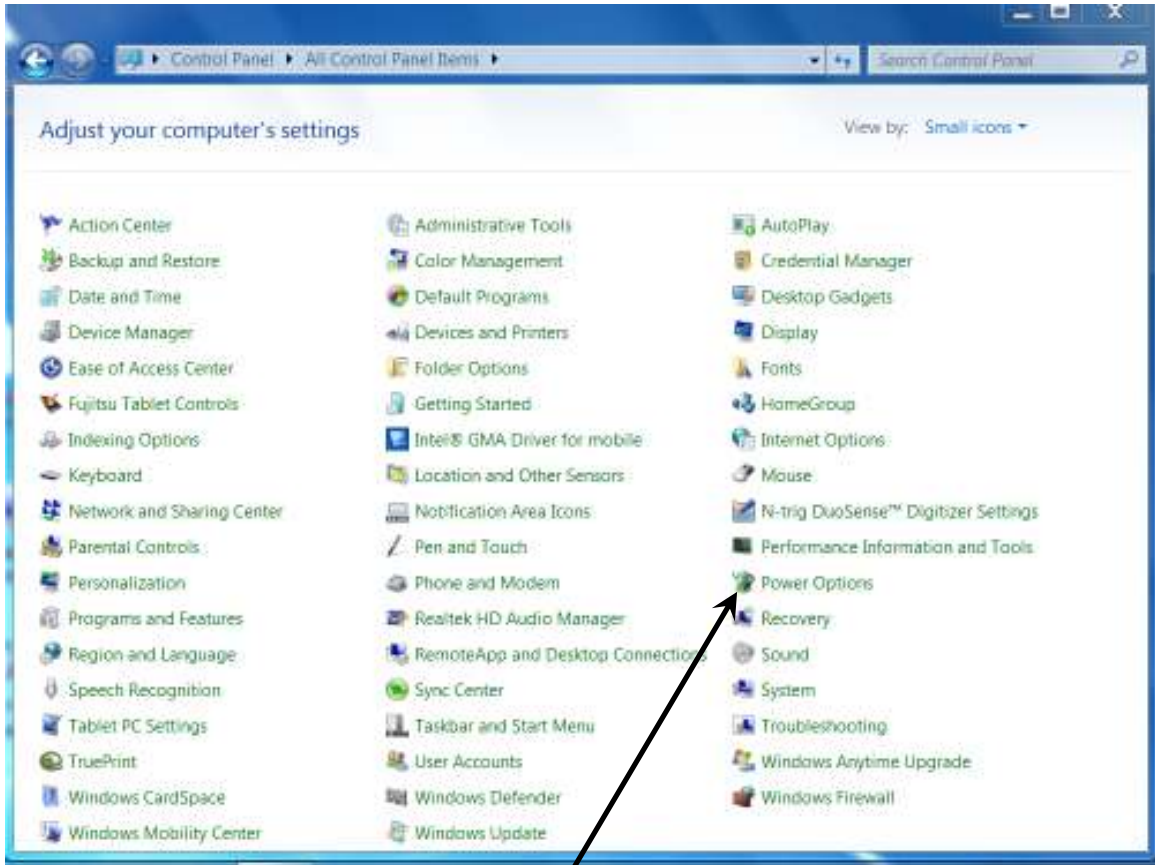
Move this slider to Never Notify.

Click OK

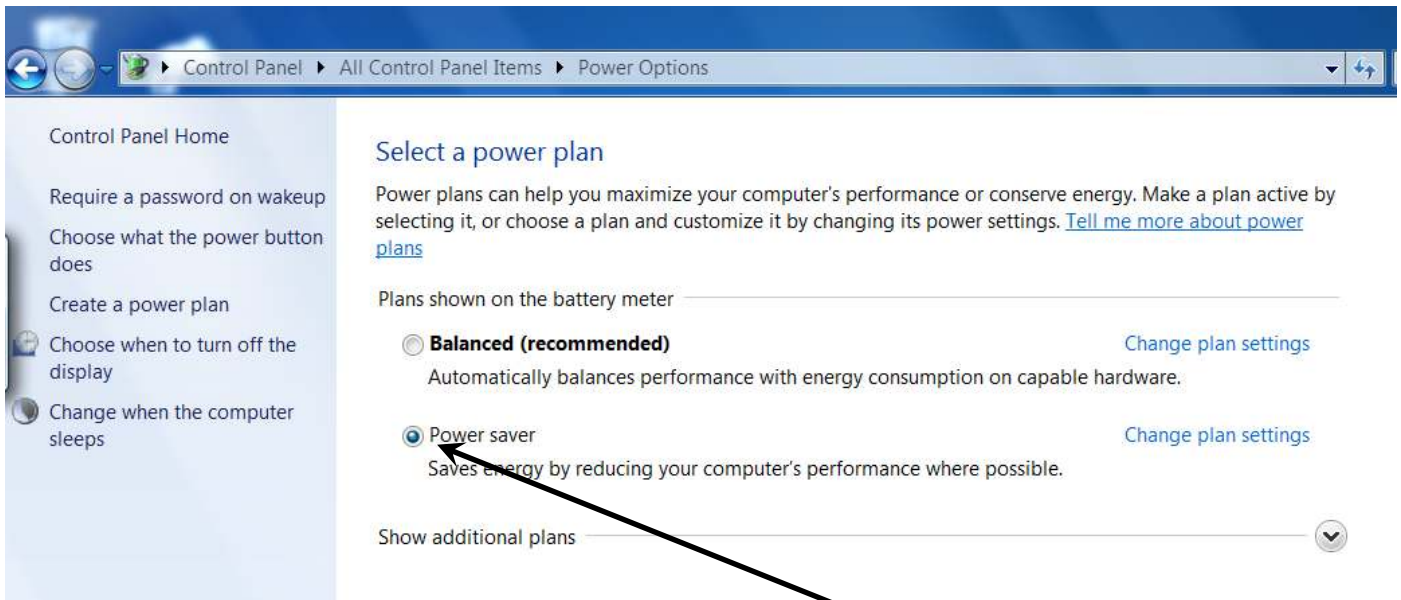
OK

Cancel

The Control Panel Screen should now look like the picture below.











Now click Power Options



Select Power Saver

Change settings for the plan: Power saver

Choose the sleep and display settings that you want your computer to use.

	 On battery	 Plugged in
 Dim the display:	<input type="text" value="2 minutes"/>	<input type="text" value="Never"/>
 Turn off the display:	<input type="text" value="5 minutes"/>	<input type="text" value="Never"/>
 Put the computer to sleep:	<input type="text" value="15 minutes"/>	<input type="text" value="Never"/>
 Adjust plan brightness:		

[Change advanced power settings](#)

[Restore default settings for this plan](#)

Save changes

Cancel

Change each of these selections to Never and then press Save Changes

You must now re-boot the PC in order for the changes to take affect.