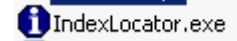
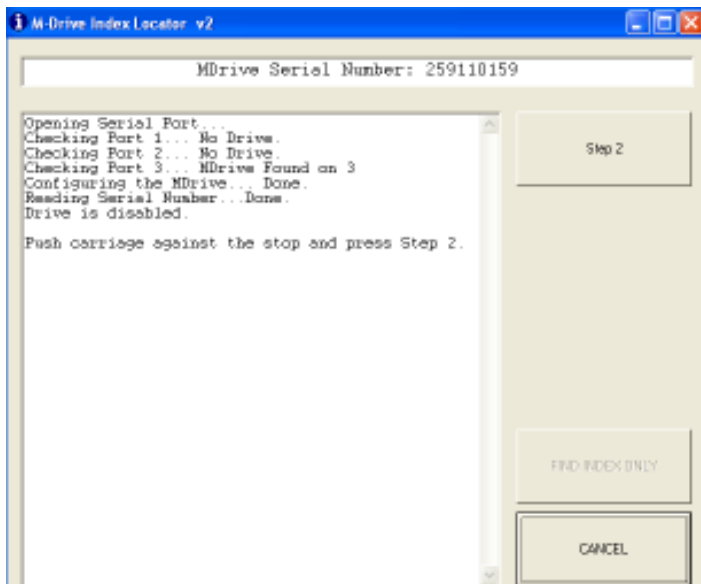


# Identifying an MDrive Cable's PC Serial Port Assignment

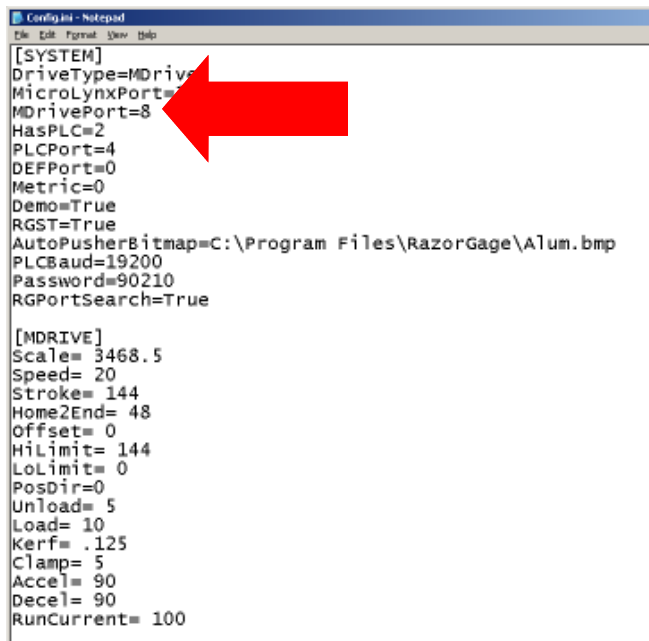
To identify which of the PC's serial ports a particular MDrive cable is connected to you may use our MDrive Index Locator Program. This program is designed to allow you to find the location of the index mark on the MDrive rotary encoder but can also be used to identify port number. The Index Locator software can be downloaded from our website's Downloads page or on later RazorGages it can be found in the folder C:\RazorGage. The icon looks like this:



The Index Locator software only consists of this one file, IndexLocator.exe, so all you have to do to run it is double click on the file. It will start up and search all serial ports on the PC until it locates a powered MDrive. Note that the software will not find the MDrive if it is not powered up. Once it finds the MDrive it reports the information shown below. If you have multiple MDrives connected to one PC then to identify the port each comm cable is connected to unplug the comm cable from all but one MDrive and then run the M-Drive Index Locator routine. Once the serial port has been identified note the port number on the comm cable that is plugged in and click the CANCEL button to close out the software. Do not proceed to Step 2 unless you need to set the MDrive index location which is only necessary when installing a new MDrive.



If your PC is connected to several MDrives then just unplug the previously connected comm cable and plug another one into a powered MDrive and run the software again. Note the port number on the cable and repeat until you have identified the ports associated with all comm cables on the system. Once you know which comm port is associated with each comm cable then go to C:\Program Files\RazorGage and find the config.ini file. If your software supports multiple MDrives then there will be multiple numbered config files corresponding to each motor being controlled.



When opened, the config file looks like the figure at left. For a given MDrive config file change the MDrivePort parameter to match the port you have identified. If your RazorGage software controls multiple MDrives then you will need to open a config file for each MDrive on the system and set the MDrivePort parameter to one of the ports identified above. You will probably have to randomly assign port numbers to the various MDrives, open the RazorGage software and then in the Manual Screen move each RazorGage so that you know which port is associated with each RazorGage number, then close the software and go into each config file and enter the correct number.