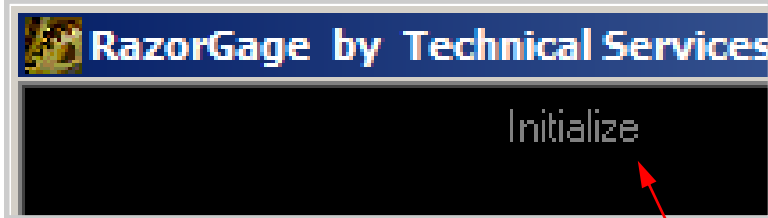


# RAZORGAGE

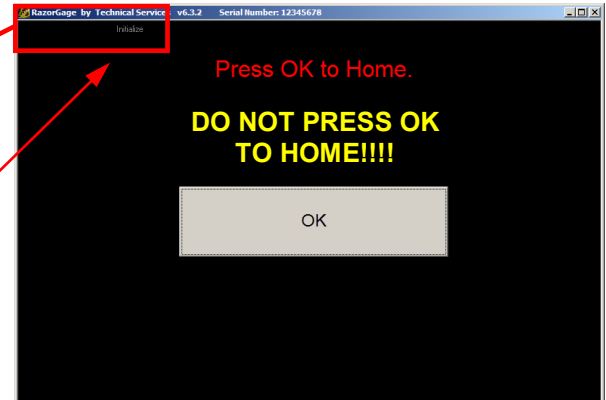
POSITIONERS • SOFTWARE • SYSTEMS

## Instructions for reprogramming an MDrive

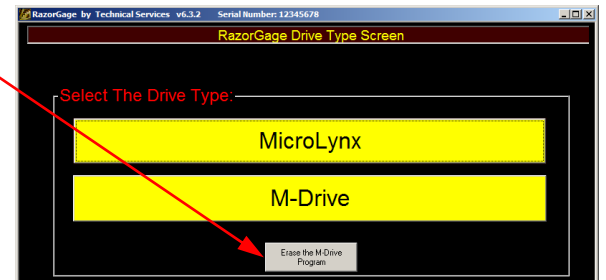
After replacing an MDrive or if you want to load a different program in an MDrive DON'T CLICK OK TO HOME after starting up the RazorGage Software. Instead click the INITIALIZE button in the upper left quadrant of the HOME screen as shown below.



Press the "Initialize" button located here.



Press the "Erase the M-Drive Program" button.

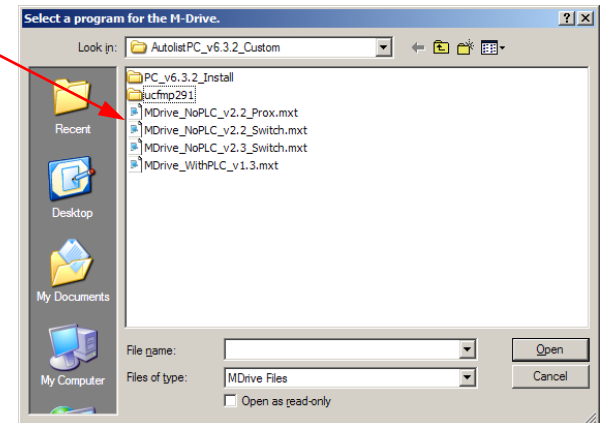


Select the appropriate MDrive Program and click Open.

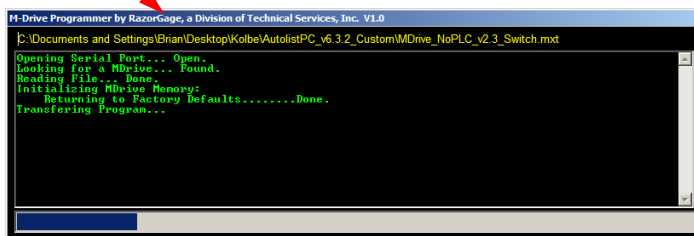
MDrive\_NoPLC\_vx.x\_Switch is typical for most RazorGages.

Only choose MDrive\_NoPLC\_vx.x\_Prox if you have capacitive or inductive proximity sensors providing signals to the RazorGage. This is rare.

MDrive\_WithPLC\_vx.xx is only used on RazorOptimal and APS Systems that have a PLC controller inside the electrical enclosure.



You should see this screen during download.



Choose Units

Choose Encoder Type  
(almost always Internal Rotary)

\* For Standard RazorGages chose No I/O  
\* For RazorOptimals and APS systems chose PLC I/O  
\* If you have a RazorGage with a Tool Safe Sensor and/or Air Safety ONLY choose B.M.I.  
\* If you have a RazorGage with the BMI Plus Option (Tool Safe, Clamp Valve, & Saw Valve) chose BMI Plus.

