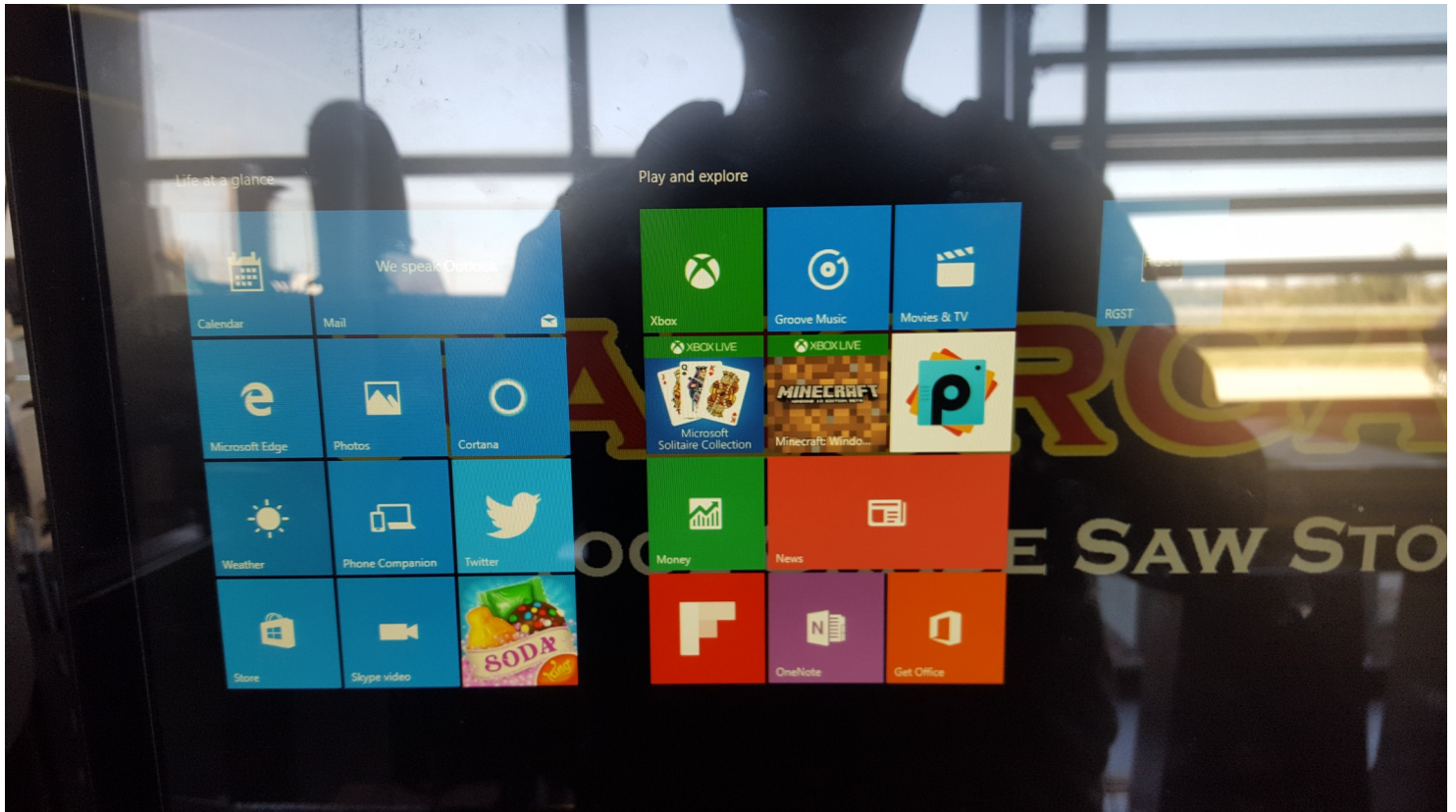
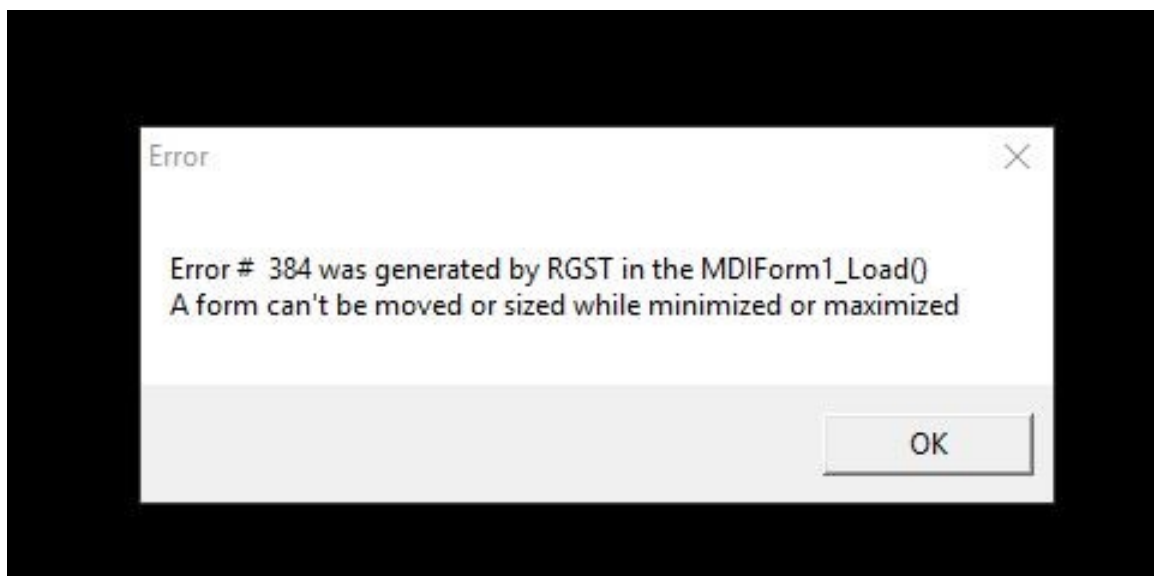


# Tablet Mode

If your Windows tablet or PC is stuck on the tiles screen and you cannot get back to the desktop screen it is most likely in tablet mode.

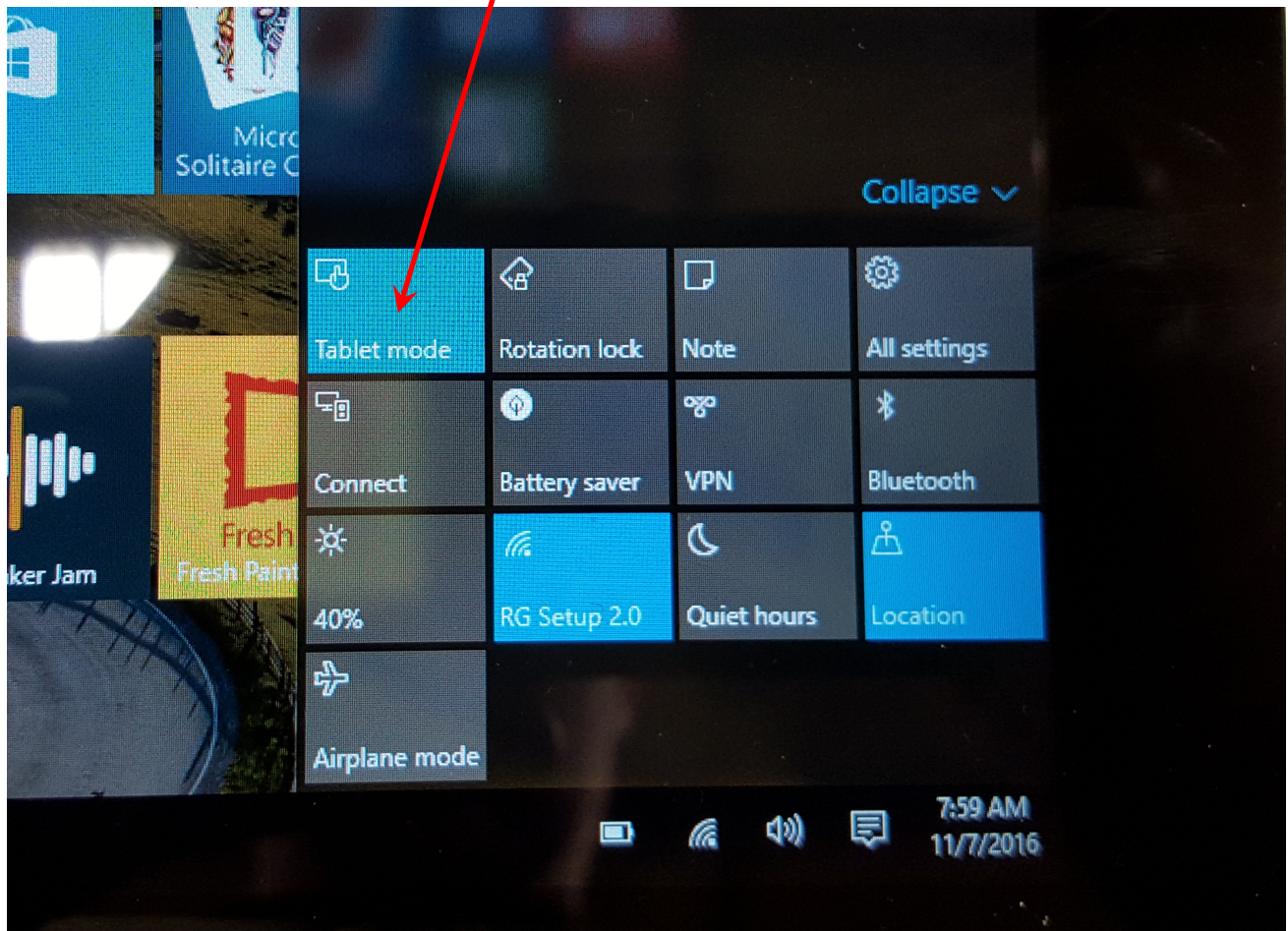


If the Razorgage software gives you the error shown below it is most likely in tablet mode.



# Getting out of Tablet Mode

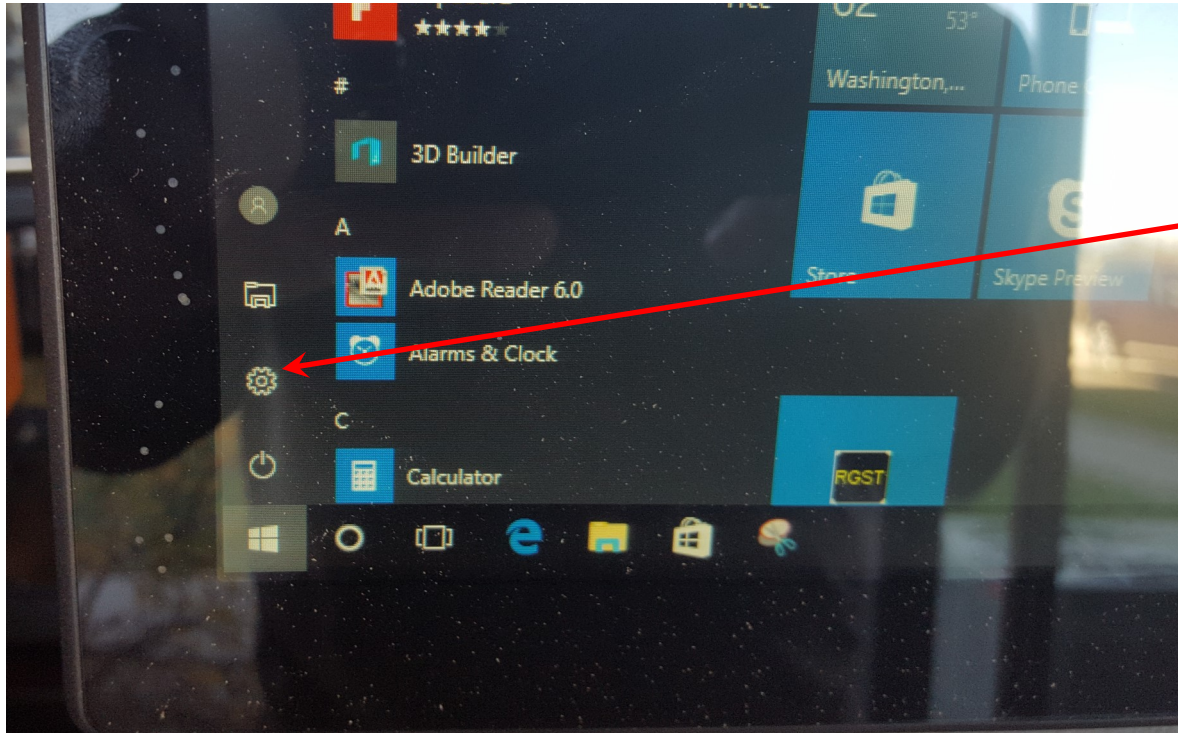
Your Razorgage will not work in tablet mode. To get out of it swipe your finger in from the middle right side of the screen. This should bring up the menu shown below. Then tap the tablet mode button so that it turns grey.





# Getting out of Tablet Mode

To change the tablet mode settings tap the Windows icon on the very bottom left corner of the screen and then tap the settings button.



In the settings screen select system.

## Windows Settings

Find a setting



### System

Display, notifications, apps, power



### Devices

Bluetooth, printers, mouse



### Network & Internet

Wi-Fi, airplane mode, VPN



### Personalization

Background, lock screen, colors



### Accounts

Your accounts, email, sync, work, family



### Time & language

Speech, region, date



### Ease of Access

Narrator, magnifier, high contrast



### Privacy

Location, camera



### Update & security

Windows Update, recovery, backup

# Getting out of Tablet Mode

In the system settings window select Tablet Mode. Change your tablet mode settings to match the settings shown below.

