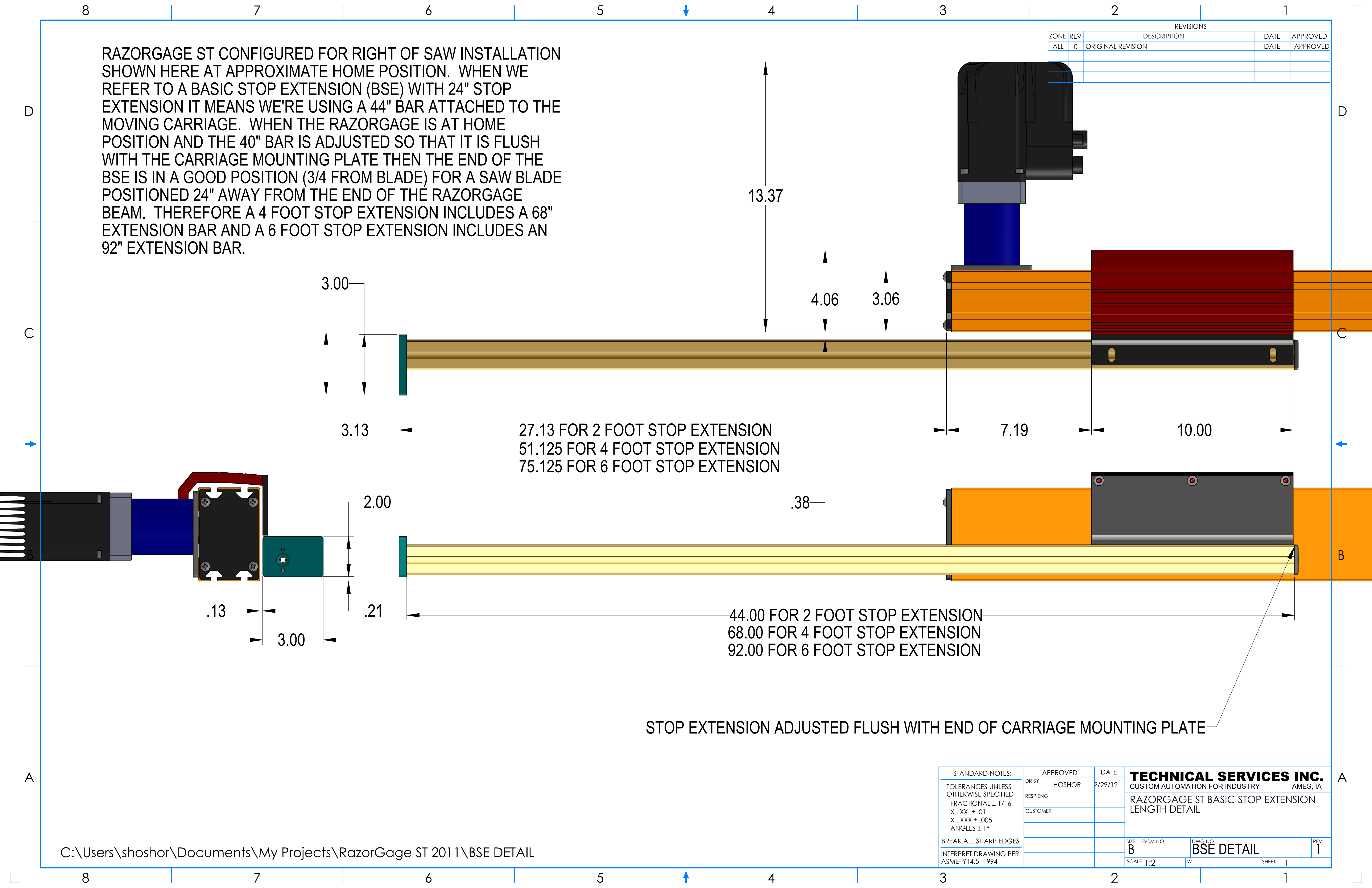


ZONE		REV		DESCRIPTION	DATE	APPROVED
ALL	0	ORIGINAL	REVISION		DATE	APPROVED

RAZORGAGE ST CONFIGURED FOR RIGHT OF SAW INSTALLATION SHOWN HERE AT APPROXIMATE HOME POSITION. WHEN WE REFER TO A BASIC STOP EXTENSION (BSE) WITH 24" STOP EXTENSION IT MEANS WE'RE USING A 44" BAR ATTACHED TO THE MOVING CARRIAGE. WHEN THE RAZORGAGE IS AT HOME POSITION AND THE 40" BAR IS ADJUSTED SO THAT IT IS FLUSH WITH THE CARRIAGE MOUNTING PLATE THEN THE END OF THE BSE IS IN A GOOD POSITION (3/4 FROM BLADE) FOR A SAW BLADE POSITIONED 24" AWAY FROM THE END OF THE RAZORGAGE BEAM. THEREFORE A 4 FOOT STOP EXTENSION INCLUDES A 68" EXTENSION BAR AND A 6 FOOT STOP EXTENSION INCLUDES AN 92" EXTENSION BAR.



3.00
3.13
27.13 FOR 2 FOOT STOP EXTENSION
51.125 FOR 4 FOOT STOP EXTENSION
75.125 FOR 6 FOOT STOP EXTENSION
13.37
4.06
3.06
7.19
10.00
3.00
3.13
2.00
.13
3.00
.21
44.00 FOR 2 FOOT STOP EXTENSION
68.00 FOR 4 FOOT STOP EXTENSION
92.00 FOR 6 FOOT STOP EXTENSION
13.37
4.06
3.06
7.19
10.00
3.00
3.13
2.00
.13
3.00
.21
44.00 FOR 2 FOOT STOP EXTENSION
68.00 FOR 4 FOOT STOP EXTENSION
92.00 FOR 6 FOOT STOP EXTENSION
13.37
4.06
3.06
7.19
10.00
3.00
3.13
2.00
.13
3.00
.21
44.00 FOR 2 FOOT STOP EXTENSION
68.00 FOR 4 FOOT STOP EXTENSION
92.00 FOR 6 FOOT STOP EXTENSION

STOP EXTENSION ADJUSTED FLUSH WITH END OF CARRIAGE MOUNTING PLATE

STANDARD NOTES: TOLERANCES UNLESS OTHERWISE SPECIFIED FRACTIONAL ± 1/16 X . XX ± .01 X . XXX ± .005 ANGLES ± 1°	APPROVED	DATE	TECHNICAL SERVICES INC. CUSTOM AUTOMATION FOR INDUSTRY AMES, IA
	DR BY: HOSHOR	2/29/12	
	RESP ENG:		
BREAK ALL SHARP EDGES			SIZE: B
INTERPRET DRAWING PER ASME Y14.5-1994			FSCM NO.:
			DWG NO.:
			WT:
			SHEET 1
			REV 1