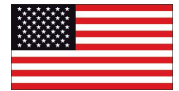


# RAZORGAGE

POSITIONERS • SOFTWARE • SYSTEMS



Ames, Iowa

## APS Automatic Optimizing Cutoff Saw System

RazorGage APS runs on Windows so networking is easy. Intuitive software is displayed on a 22" touch screen.

Inkjet print directly on parts or print paper labels to keep parts organized.

Intelligent front roller clamps don't retract between cuts; clamp incoming side only then switch to outfeed side near end of board eliminating scrap parts caused by half clamping leading or trailing edge.

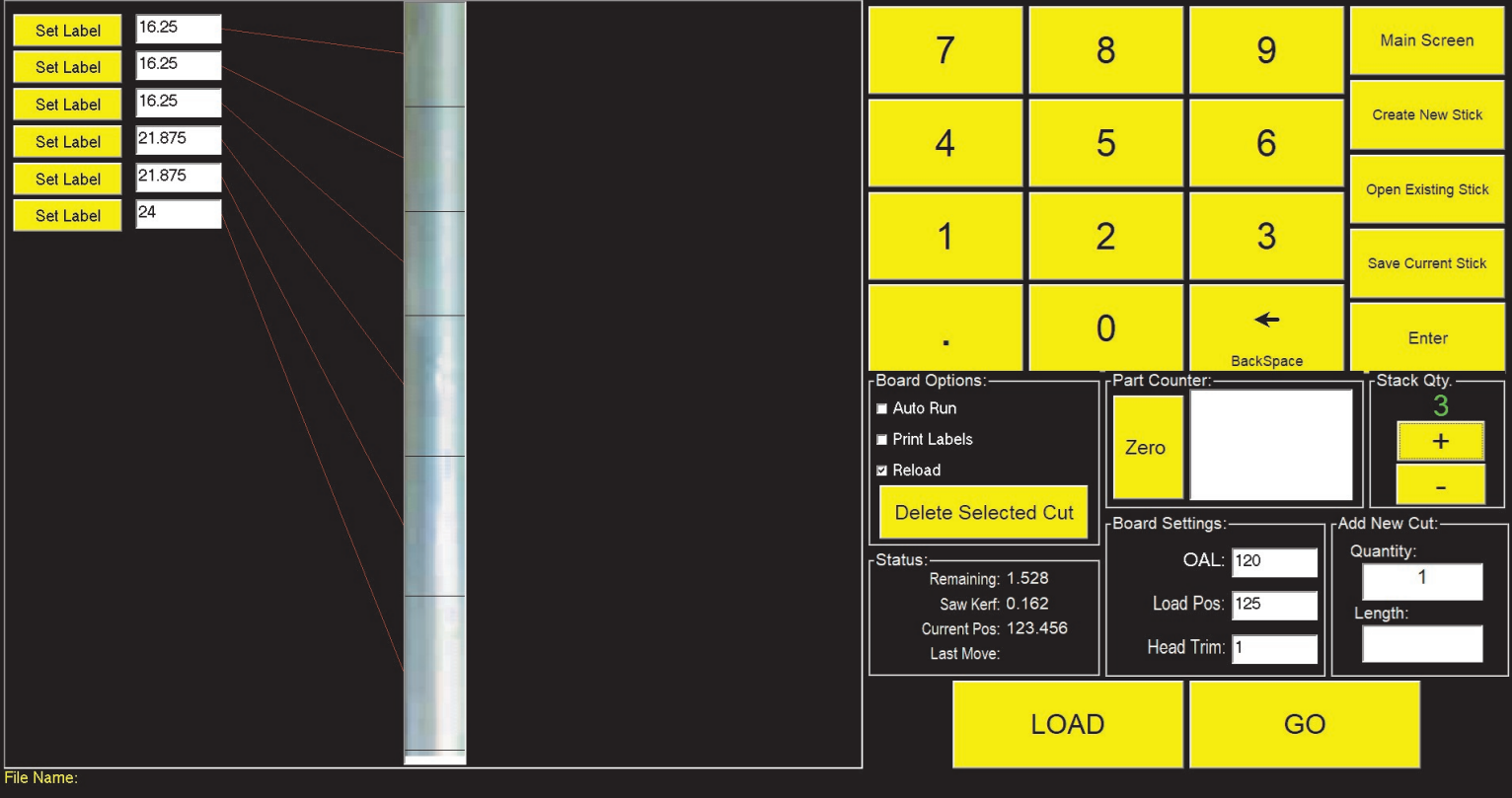
Aluminum option includes aluminum cutting blade and dual misters to lubricate both sides of blade.

7.5 HP Direct drive 500mm blade slides on Hiwin Linear bearings for maximum rigidity. Optional 600mm blade can cut up to 1" thick by 20" wide or 6" x 6".

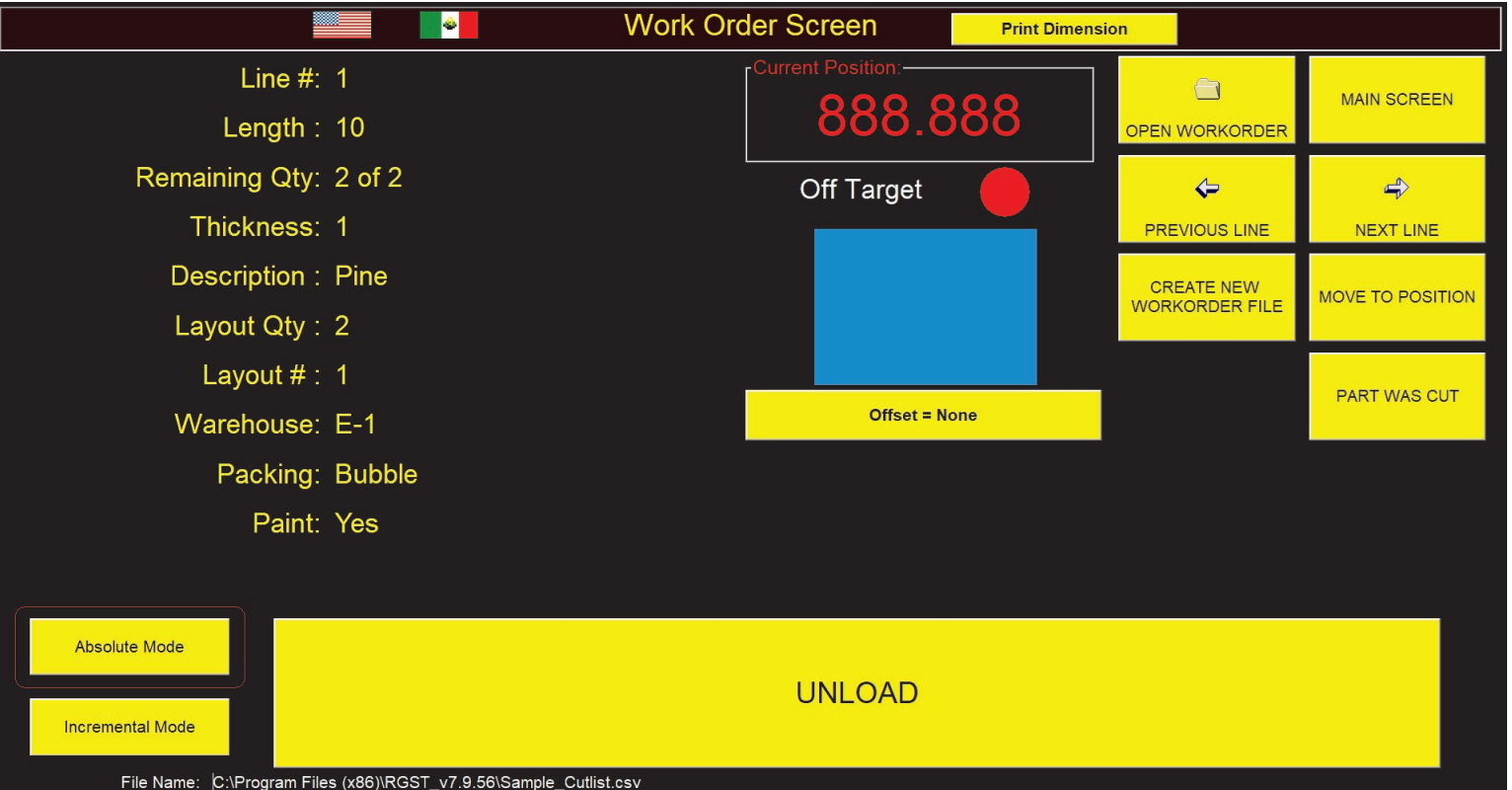
Ask us about combining secondary operations such as drilling or punching.

**RazorGage** Ames, IA (515) 232-3188 [www.razorgage.com](http://www.razorgage.com)

The Auto Pusher Screen lets you define a cut pattern for a given stock length, save it, and run it whenever it's needed. You can store thousands of these.



In the Work Order Screen, cutlists can be created either locally or on another device and transferred via USB, Ethernet, Wifi, or Bluetooth. You could even create a cutlist on your phone and email it to the RazorGage if you wish.



Batch Screen is good for running many parts of the same length. Store part numbers containing length and material, select, & run. Indicate a bundle quantity at run time and the parts counter will increment accordingly.

Current Pos: 888.888

Batch Parts Screen

Print Dimension

Exit to Main Screen

Create New Part

Edit Selected Part

Part Number (Filename)

RGX24786

Trim Cut

0.500

Change

Desired Quantity

2500

Change

# of 'Stock Pieces' Loaded

5

+

-

Completed Parts

0

Reset

LINE UP

LINE DOWN

Cut Length

45.5

Material Type

AL5062

USE A NEW STOCK LENGTH

USE LAST STOCK LENGTH (96.000")

RUN

RESUME

PAUSE

CANCEL

RGX21866.txt

RGX24786.txt

RGX3429.txt

RGX45498.txt

RGX54895.txt

RGX85721.txt

The Autolist Screen opens and sorts cutlists into groups of like material type, color, job, you name it. Then it optimizes to maximize yield. It can also run pre-optimized cutlists. Extremely intuitive yet very powerful. See the video on [www.razorgage.com](http://www.razorgage.com) for more.

Standard PC Positioning Software v7.4.0 Serial Number: Demo Version

AutoList - Pusher

Switch to Stop

SETTINGS

MAIN

OPEN FILE

CLOSE FILE

QTY +

QTY -

OFFSET = NONE

ENTER LENGTH

USE LENGTH 120

Grouping List

NEXT GROUP

Total QTY for All Parts: 54

Part Grouping 2 of 2

SEQ_NUM	QUANTITY	MATERIAL	PART	LENGTH	ROOM NAME	ROOM NUM	CABINET NAME
9	1	3/4 PG Solid Stock	Left Stile	88.125	Kitchen	3	Fridge
32	1	3/4 PG Solid Stock	Top Rail	77	Kitchen	3	Hood
33	1	3/4 PG Solid Stock	Top Rail	67.5	Kitchen	3	L of Range
35	1	3/4 PG Solid Stock	Top Rail	59.625	Kitchen	3	R of Fridge
34	1	3/4 PG Solid Stock	Bottom Rail	59.625	Kitchen	3	R of Fridge
37	1	3/4 PG Solid Stock	Bottom Rail	55	Kitchen	3	L of Hood
36	1	3/4 PG Solid Stock	Top Rail	55	Kitchen	3	L of Hood
38	1	3/4 PG Solid Stock	Top Rail	48.125	Kitchen	3	R of Fridge
40	1	3/4 PG Solid Stock	Top Rail	41	Kitchen	3	R of Win
39	1	3/4 PG Solid Stock	Top Rail	41	Kitchen	3	R of Win
25	1	3/4 PG Solid Stock	Right Stile	40.125	Kitchen	3	R of Fridge
29	1	3/4 PG Solid Stock	Right Stile	40.125	Kitchen	3	R of Sink
24	1	3/4 PG Solid Stock	Left Stile	40.125	Kitchen	3	L of Hood
28	1	3/4 PG Solid Stock	Left Stile	40.125	Kitchen	3	L of Sink
41	1	3/4 PG Solid Stock	Top Rail	37.375	Kitchen	3	Sink
42	1	3/4 PG Solid Stock	Top Rail	33	Kitchen	3	China Cabinet
12	1	3/4 PG Solid Stock	Drawer Slab	32	Kitchen	3	Sink

C:\Documents and Settings\Sleev Hoshor\My Documents\RazorGage\CUTLISTS\Cabinet\Vision\I12maghwood for 7\_4.rdb

3/4 PG Solid Stock 0.75 7.75

Left Stile Kitchen 11

RazorGage by Technical Services v6.4.3 Serial Number: Demo Version

PUSHER MODE - RUNNING A BOARD

#	DONE	SEQ_NUM	PROFILE #	LAYOUT	PART	LENGTH	JOB
1	NO	26	WW-502 @ 24 -3	2	HD/S2 (W18) BLK	29.375	C Are
2	NO	21	WW-502 @ 24 -3	2	HD/S1 (W16/16A) BLK	43	C Are
3	NO	25	WW-502 @ 24 -3	2	HD/S1 (W17/17A) BLK	53	C Are
4	NO	24	WW-502 @ 24 -3	2	HD/S1 (W17/17A) BLK	53	C Are
5	NO	23	WW-502 @ 24 -3	2	HD/S1 (W17/17A) BLK	53	C Are
6	NO	22	WW-502 @ 24 -3	2	HD/S1 (W17/17A) BLK	53	C Are

LOAD OUT

CANCEL RUN

1

2

3

4

5

6



# Specifications

Saw Motor Specs	7.5 hp (enclosed fan cooled) available in 208-230-460Vac 3-phase
Power Requirement	10 Amps 120 VAC plus one of the following: 230 VAC, 3 phase, 30 Amps OR 460 VAC, 3 phase, 20 Amps
Dust Collection Ports	Two 4" diameter (102 mm) requiring 600 cfm (17 m <sup>3</sup> ) minimum for dry light materials. Other material may need higher velocity/pressure
Compressed Air	Requires 80 psi (5.5 bar) at 5 cfm (0.14 m <sup>3</sup> ) air filtered to 2.5 microns (oil and moisture free). Use industrial air dryer, rated for cfm (CM) flow. No lubrication required for air components. Air must be lubricant free.
Motor RPM	Variable from 2200 to 3450
Arbor	1.000 inch
500 mm Blade for Wood	500mm x 120T x 1" Bore x 23°ATB/5°ASF x Plate .128 x Kerf .172
500mm Blade for Aluminum	O/D 500mm or 19.68" x Kerf 3.5mm or .137" x Plate 3.0mm or .118" x Bore 25.4mm or 1.00" x Teeth 140 D Type Tip Grade Sash Pro X Expansion Slots Five.
24" Blade for Wood	24" Dia. x 144T x 1" Bore x 23°ATB/5°ASF x Hook 22° Plate.138 x Kerf.186
24" Blade for Aluminum	24" Dia. x 200 Teeth x 1" Bore x TCG x Hook 6° Plate.138 x Kerf.174
Push Force	200 lb at 10 inches per second
Maximum Push Speed	50 Inches per Second
Stock Length Capacity	Up to 60 feet

Material Thickness	Cyclone 600 Width Capacity for Common Blade Diameters					
	14" Blade	16" Blade	18" Blade	500mm Blade	22" Blade	24" Blade
0.5	6.97	10.38	13.23	15.42	18.27	20.62
0.75	6.04	9.77	12.76	15.02	17.93	20.32
1	4.89	9.10	12.25	14.59	17.57	20.00
1.25	3.32	8.35	11.70	14.13	17.19	19.67
1.5		7.49	11.10	13.64	16.79	19.32
1.75		6.49	10.44	13.11	16.36	18.95
2		5.25	9.72	12.54	15.90	18.55
2.25		3.56	8.91	11.92	15.42	18.14
2.5			7.98	11.24	14.90	17.70
2.75			6.90	10.50	14.35	17.24
3			5.58	9.68	13.75	16.74
3.25			3.78	8.75	13.11	16.22
3.5				7.68	12.42	15.67
3.75				6.40	11.67	15.08
4				4.75	10.84	14.45
4.25				1.99	9.92	13.77
4.5					8.88	13.03
4.75					7.68	12.24
5					6.20	11.37
5.25					4.20	10.40
5.5						9.30
5.75						8.03
6						6.49

Call RazorGage for custom modifications to suit your specific application. Technical Services, Inc. is a custom machine design and build company so we can provide solutions for a wide range of industries. See pictures and video of the Automatic Pusher System and other RazorGage products at [www.razorgage.com](http://www.razorgage.com). From our home page you can click on the YouTube button to view many of our videos or click on individual products for more information or to download brochures.

