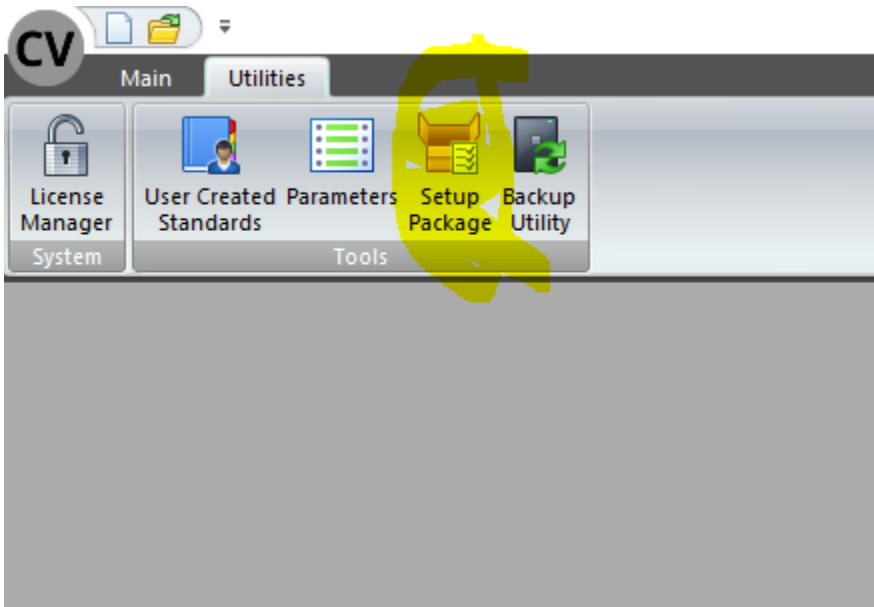
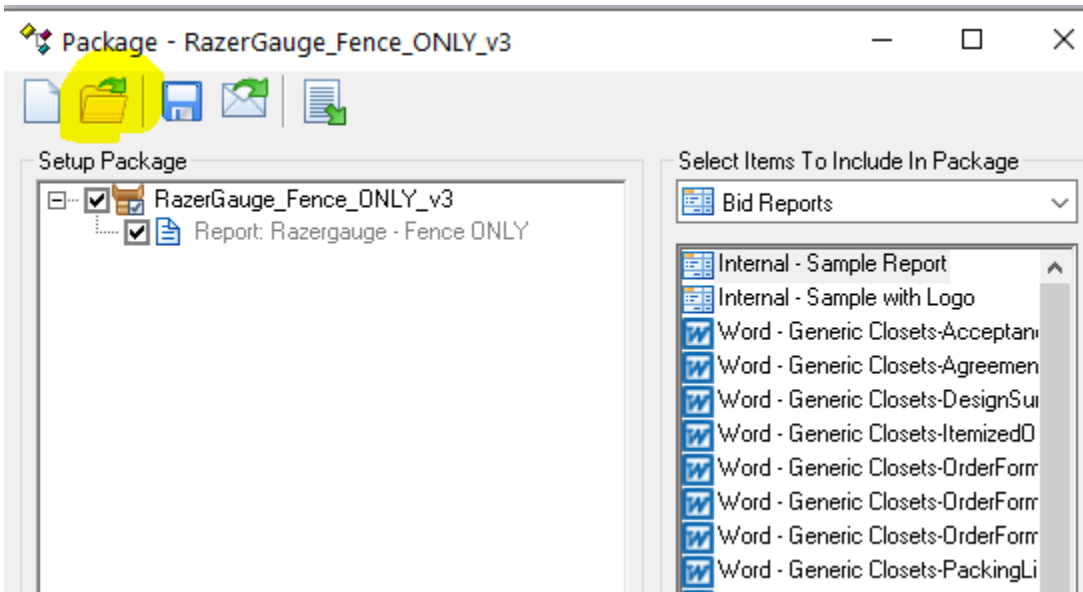


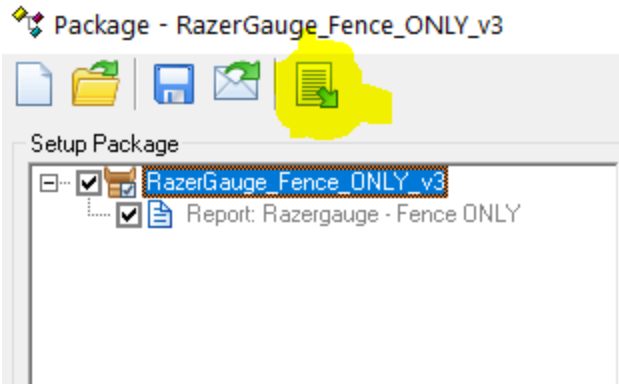
On the opening screen (splash screen) click on the utilities tab and then the Setup Package button:



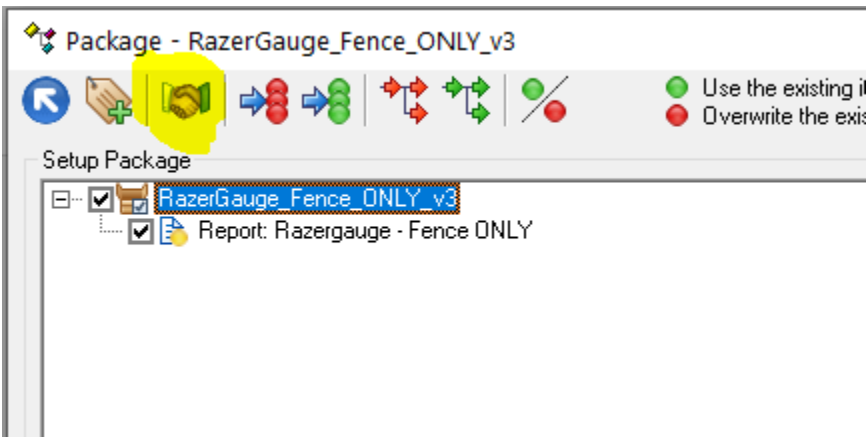
Next click on the open an existing package button and browse to your Package file called Razorgage – Fence Only v3 file:



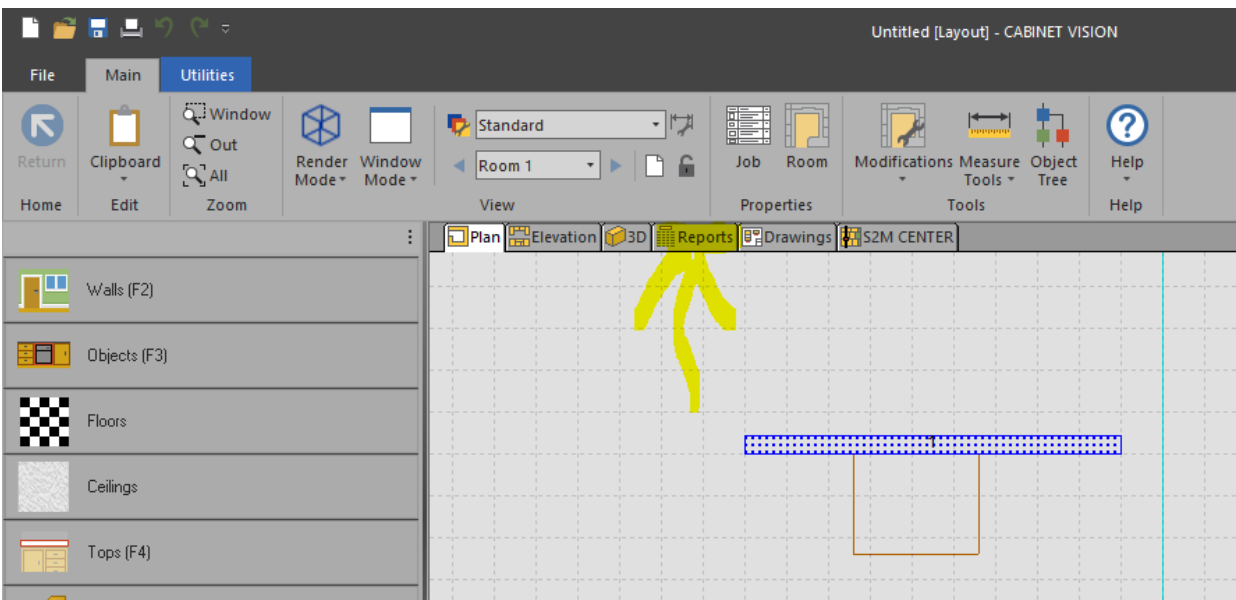
Next click on the Swap between creation and import button:



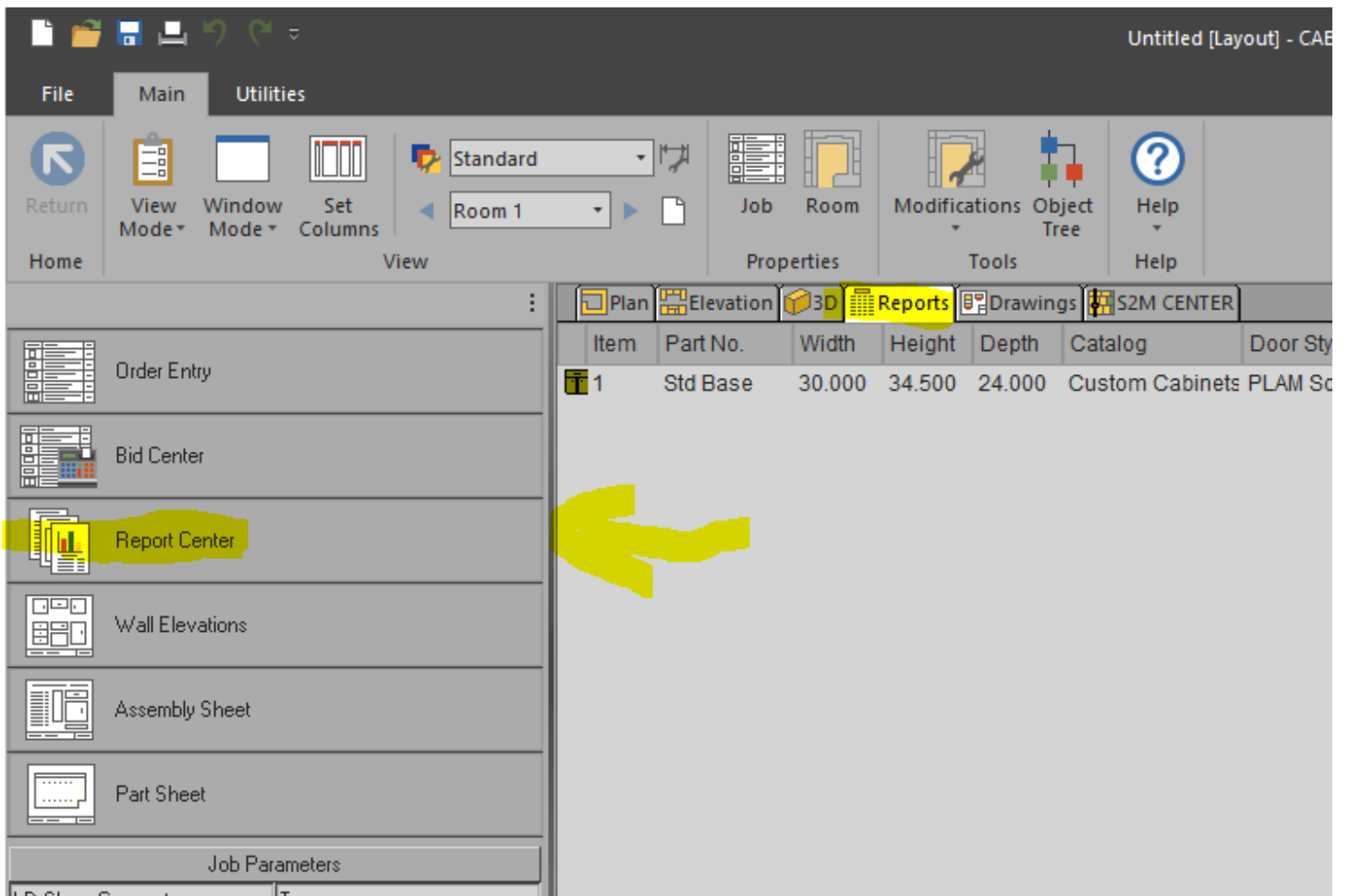
Then click on the handshake button (import package contents):



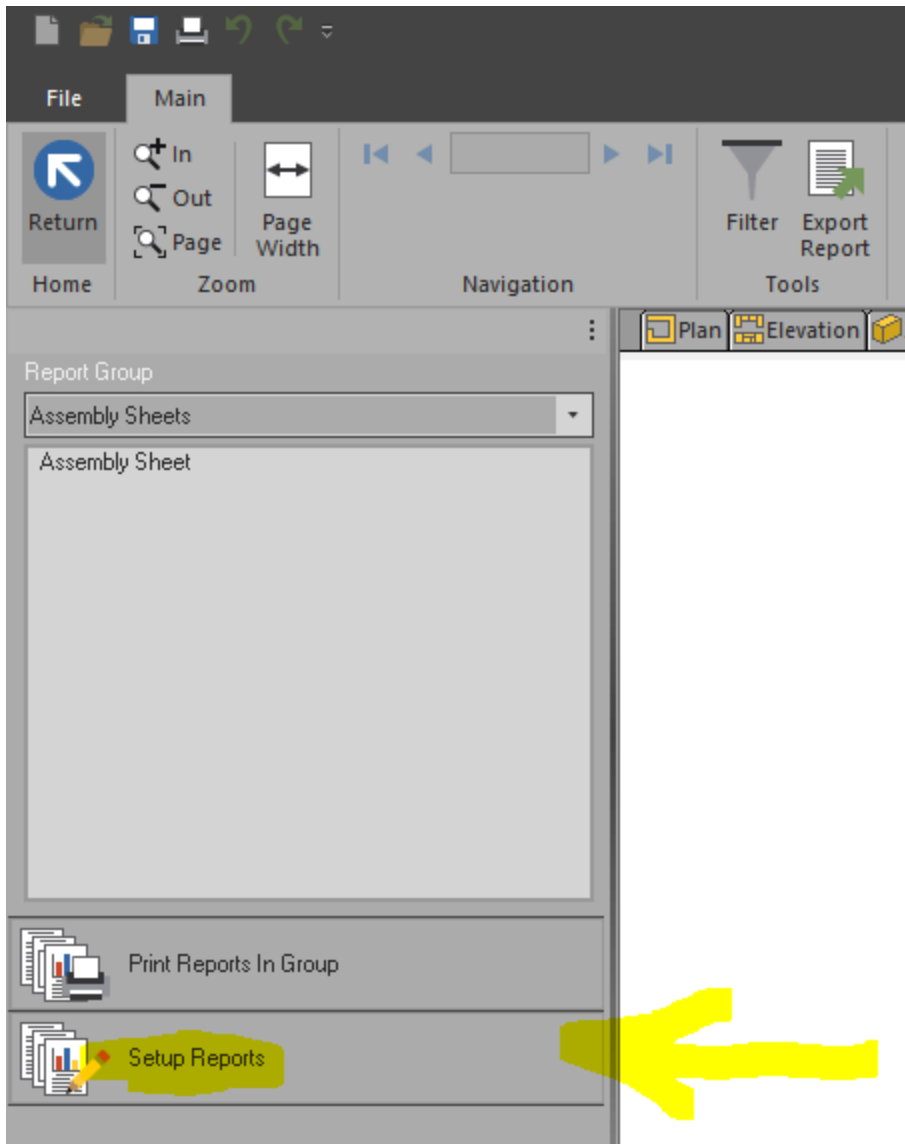
Now go into your job and click on Reports Button:



Then click on Report Center Button:



Next click on Setup Reports:

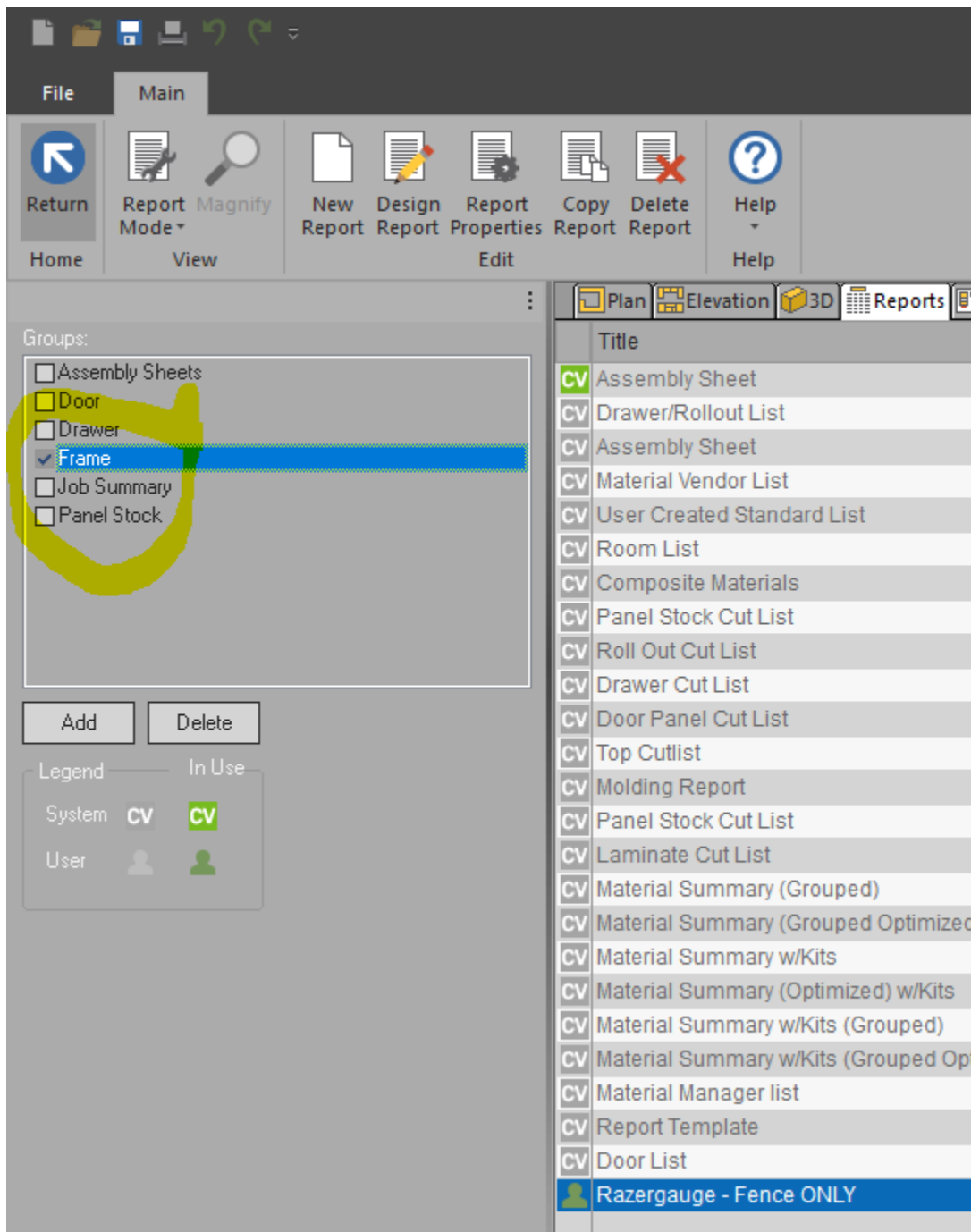


Scroll to the bottom here and highlight the new report:

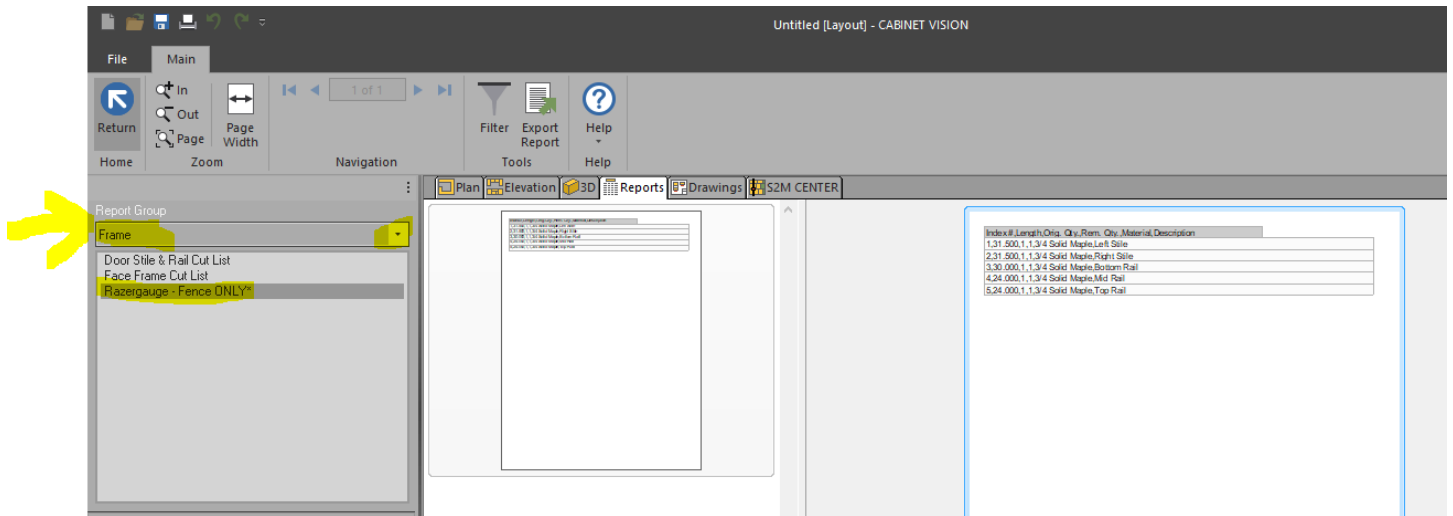
The screenshot shows a software interface with a top menu bar (File, Main) and a toolbar with icons for Return, Report Mode, Magnify, New Report, Design Report, Report Properties, Copy Report, Delete Report, and Help. Below the toolbar is a navigation bar with tabs for Plan, Elevation, 3D, Reports, Drawings, and S2M CENTER. On the left, there is a 'Groups' panel with checkboxes for Assembly Sheets, Door, Drawer, Frame, Job Summary, and Panel Stock, along with 'Add' and 'Delete' buttons and a legend for System and User. The main area displays a table of reports with columns for Title and Tag. The report 'Razergauge - Fence ONLY' is highlighted in blue at the bottom of the list.

| Title | Tag |
|--|--------|
| CV Assembly Sheet | ASM001 |
| CV Drawer/Rollout List | DWRO01 |
| CV Assembly Sheet | ASM002 |
| CV Material Vendor List | MLST01 |
| CV User Created Standard List | UCS001 |
| CV Room List | ROOM01 |
| CV Composite Materials | COMP01 |
| CV Panel Stock Cut List | CLPS12 |
| CV Roll Out Cut List | CLRO11 |
| CV Drawer Cut List | CLDR11 |
| CV Door Panel Cut List | CLDP11 |
| CV Top Cutlist | CLCT02 |
| CV Molding Report | MOLD01 |
| CV Panel Stock Cut List | CLPS13 |
| CV Laminate Cut List | CLLA11 |
| CV Material Summary (Grouped) | MTOT03 |
| CV Material Summary (Grouped Optimized) | MTOT04 |
| CV Material Summary w/Kits | MTOT05 |
| CV Material Summary (Optimized) w/Kits | MTOT06 |
| CV Material Summary w/Kits (Grouped) | MTOT07 |
| CV Material Summary w/Kits (Grouped Optimized) | MTOT08 |
| CV Material Manager list | MCL002 |
| CV Report Template | TEMP01 |
| CV Door List | DLP006 |
| CV Razergauge - Fence ONLY | |

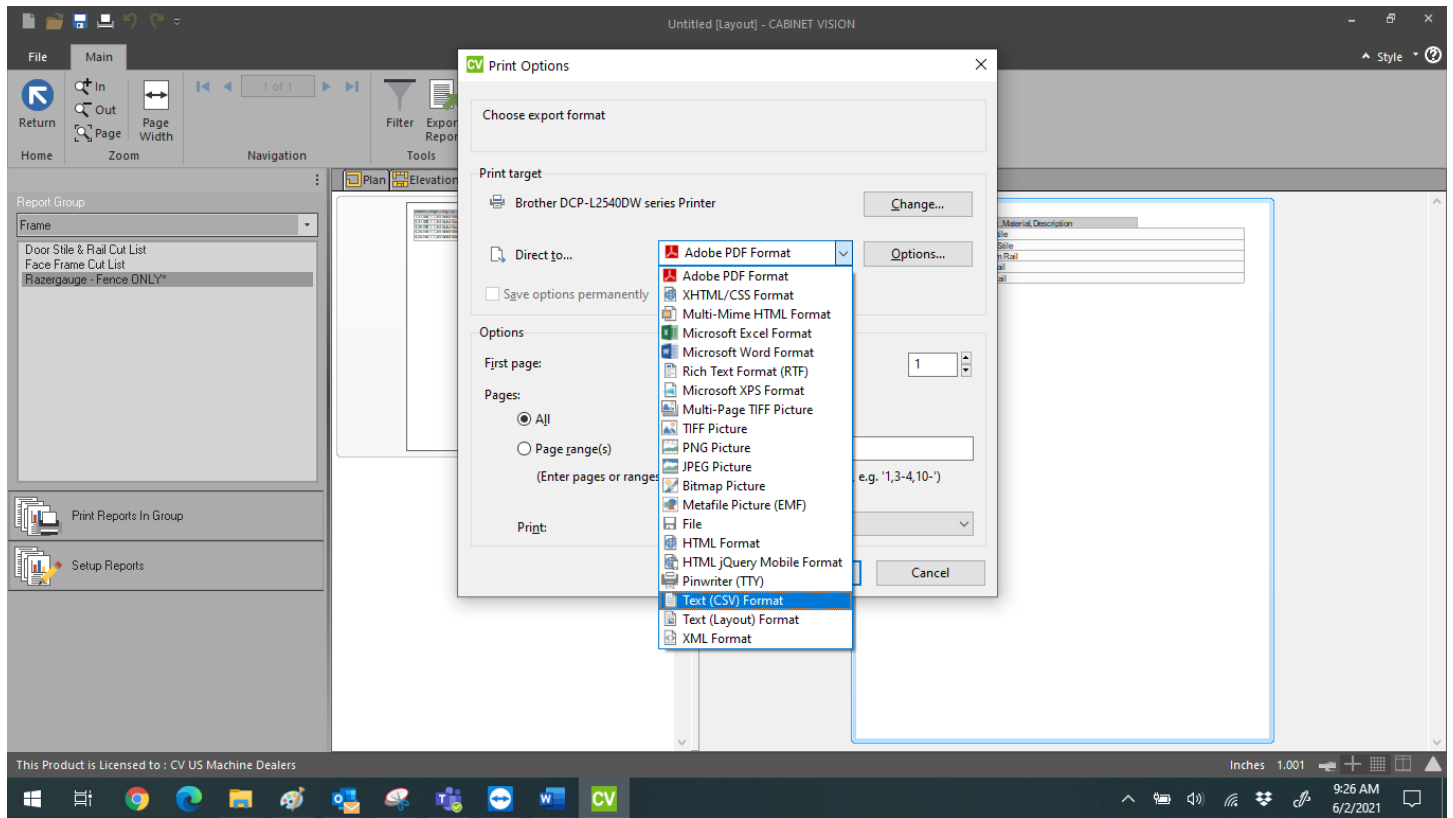
Now click on the Frame button shown here and this will activate the report under the Frame category in your report Center:



Select Frame and click on the Razorgage report:



Next, click on the Export Report button and select Text(CSV)



Then Click the Start Button to name it and select directory of where you want to send the named file.

