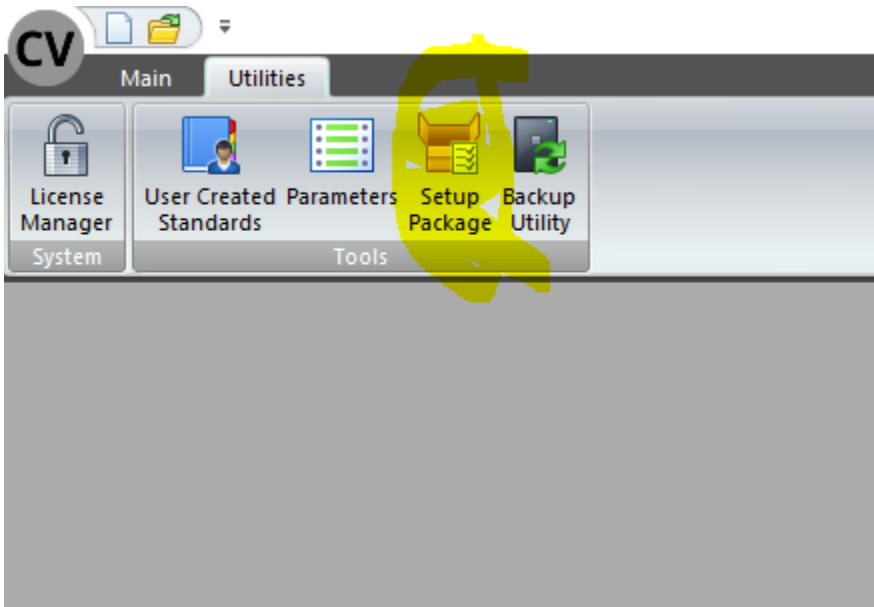
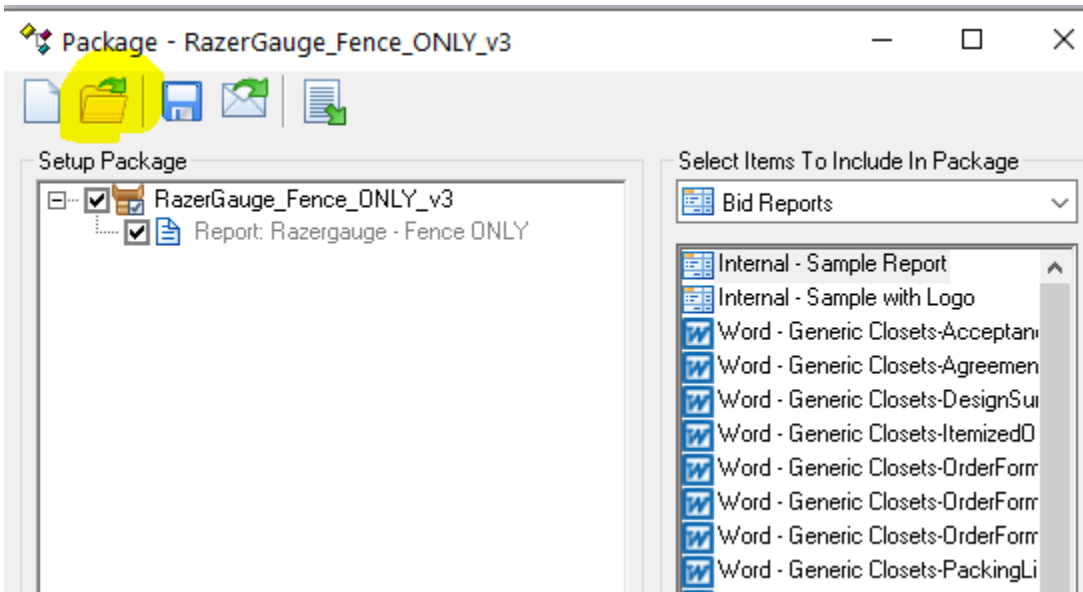


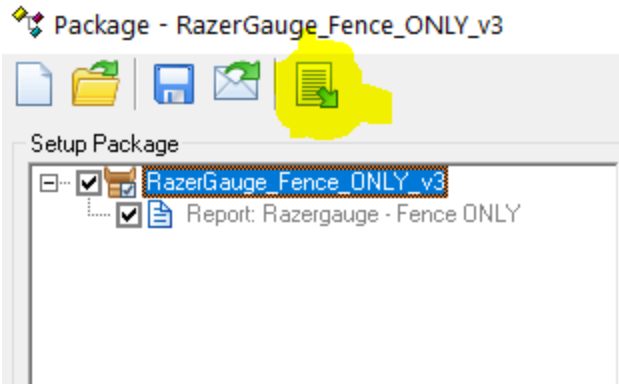
On the opening screen (splash screen) click on the utilities tab and then the Setup Package button:



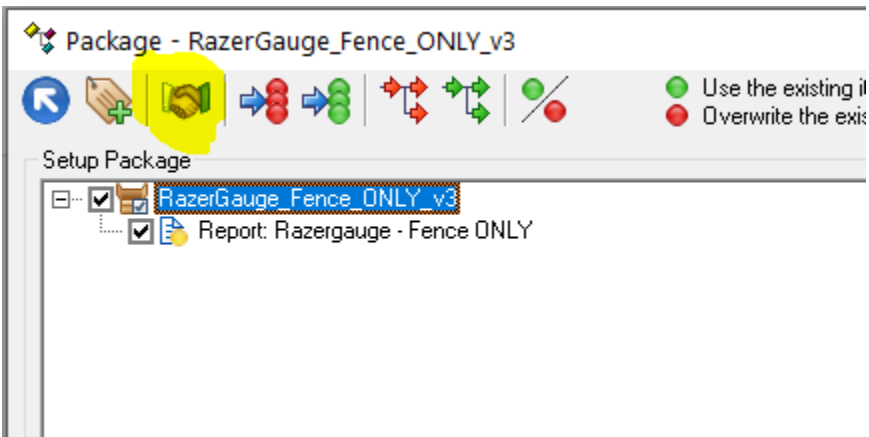
Next click on the open an existing package button and browse to your Package file called Razorgage – Fence Only v3 file:



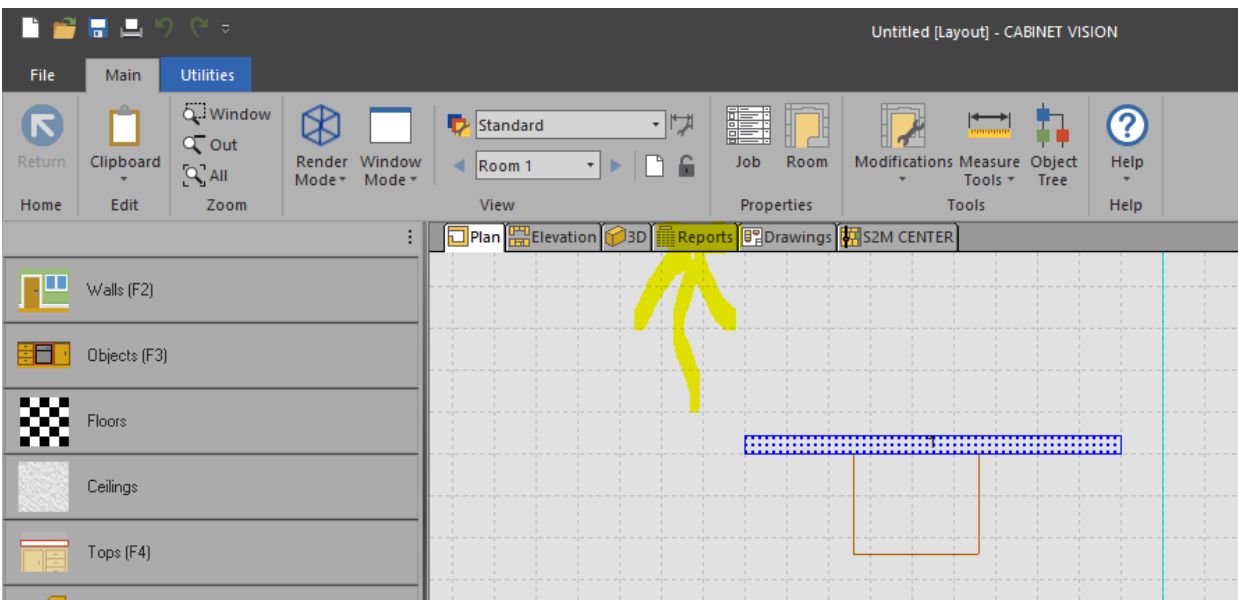
Next click on the Swap between creation and import button:



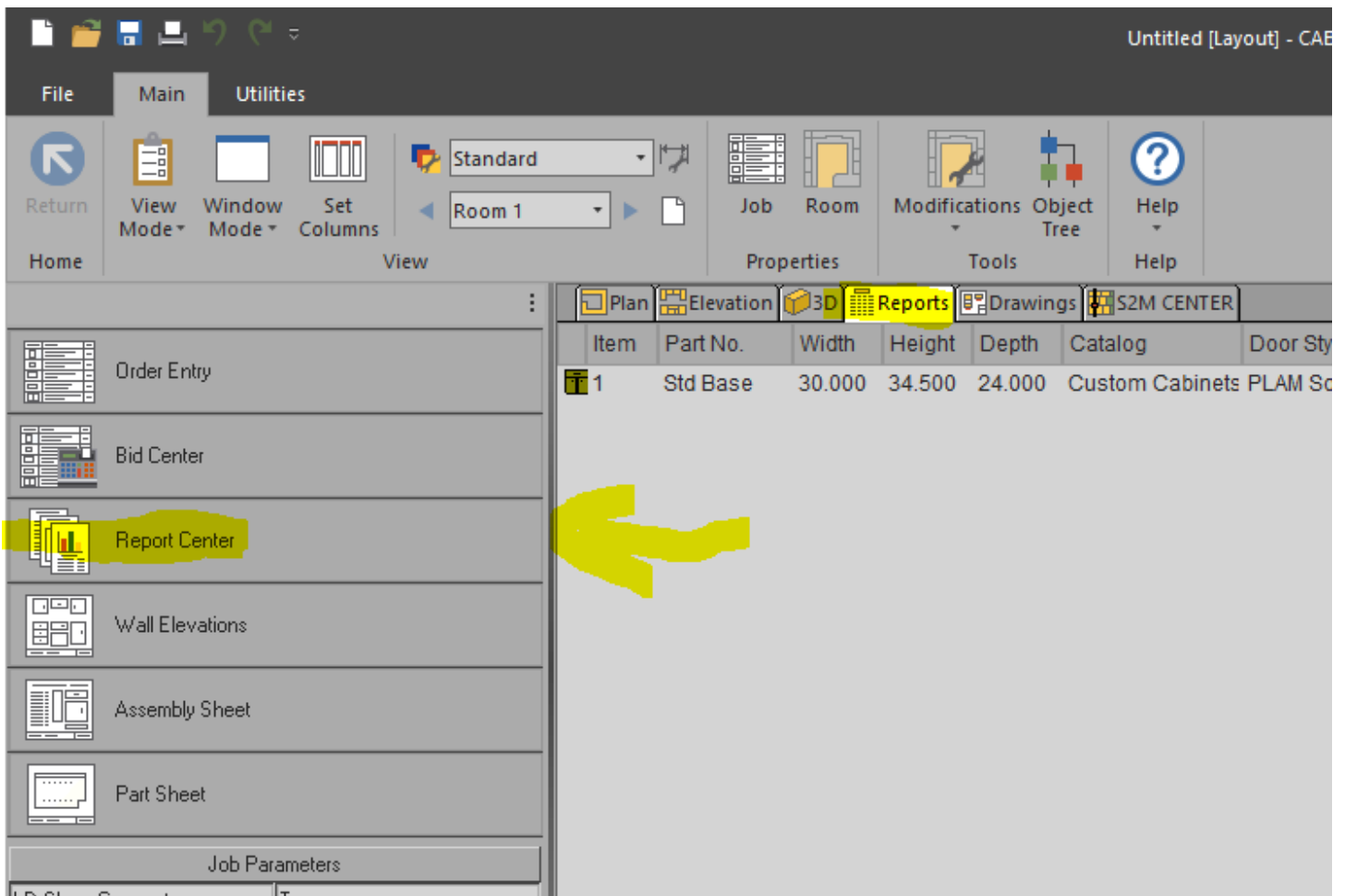
Then click on the handshake button (import package contents):



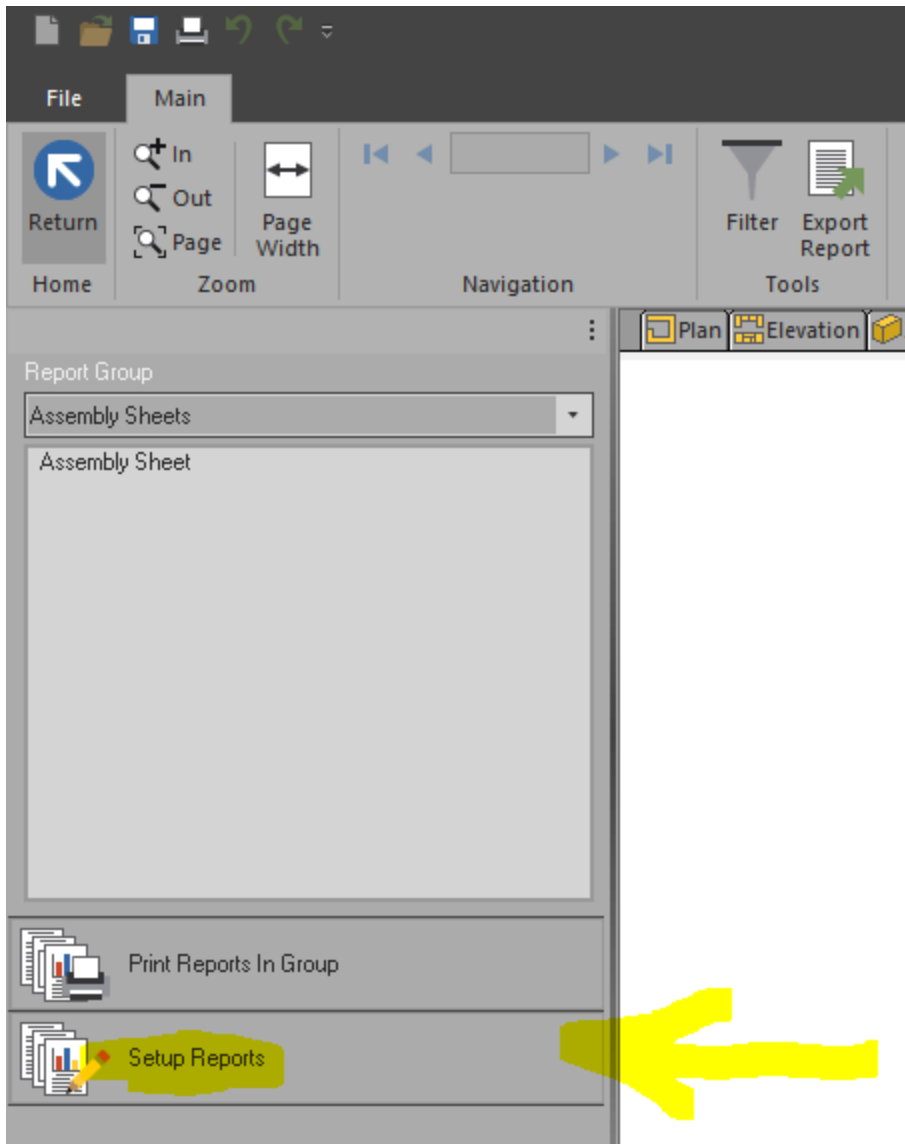
Now go into your job and click on Reports Button:



Then click on Report Center Button:



Next click on Setup Reports:



Scroll to the bottom here and highlight the new report:

The screenshot shows a software interface with a top menu bar containing 'File' and 'Main'. Below the menu bar is a toolbar with icons for 'Return', 'Report Mode', 'Magnify', 'New Report', 'Design Report', 'Report Properties', 'Copy Report', 'Delete Report', and 'Help'. The main area is divided into a left sidebar and a central table.

Groups:

- Assembly Sheets
- Door
- Drawer
- Frame
- Job Summary
- Panel Stock

Buttons: Add, Delete

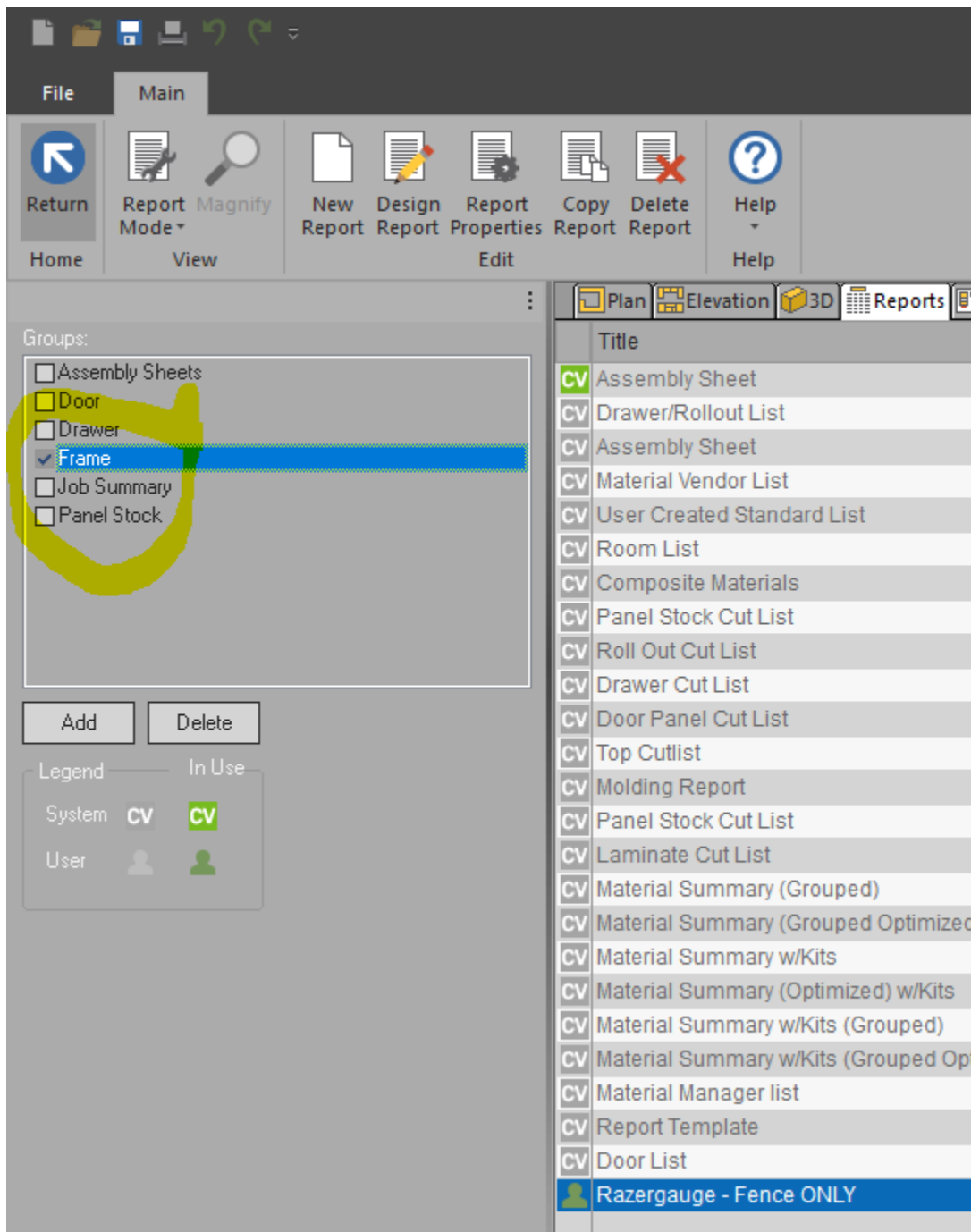
Legend:

	System	In Use
CV	CV	CV
User		

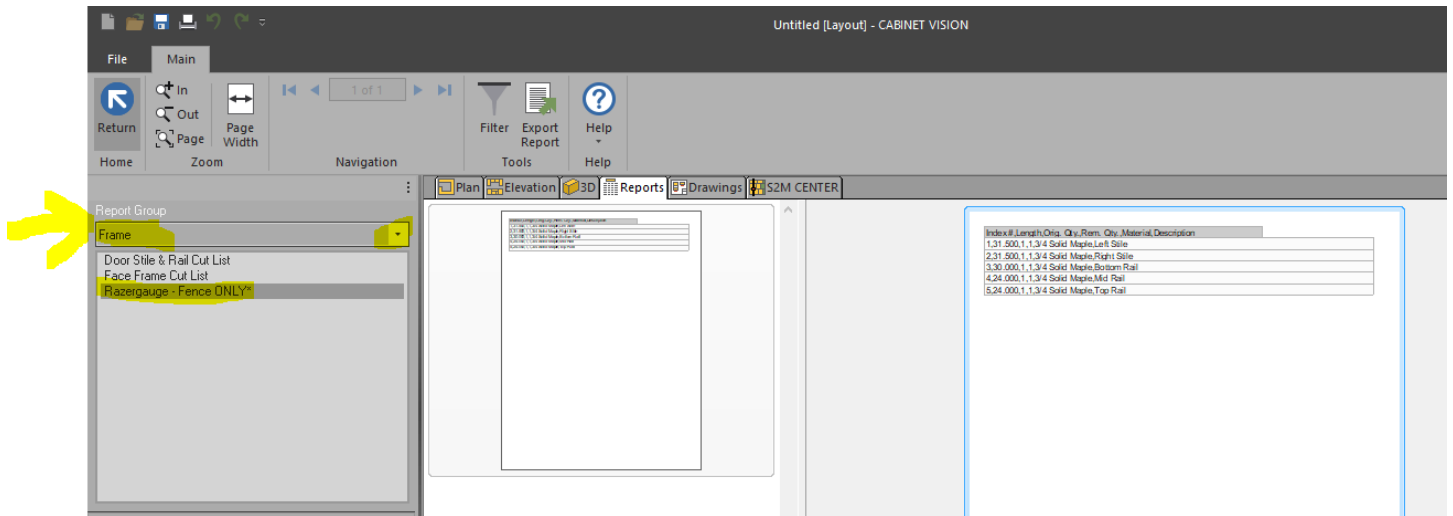
Table:

Title	Tag
CV Assembly Sheet	ASM001
CV Drawer/Rollout List	DWRO01
CV Assembly Sheet	ASM002
CV Material Vendor List	MLST01
CV User Created Standard List	UCS001
CV Room List	ROOM01
CV Composite Materials	COMP01
CV Panel Stock Cut List	CLPS12
CV Roll Out Cut List	CLRO11
CV Drawer Cut List	CLDR11
CV Door Panel Cut List	CLDP11
CV Top Cutlist	CLCT02
CV Molding Report	MOLD01
CV Panel Stock Cut List	CLPS13
CV Laminate Cut List	CLLA11
CV Material Summary (Grouped)	MTOT03
CV Material Summary (Grouped Optimized)	MTOT04
CV Material Summary w/Kits	MTOT05
CV Material Summary (Optimized) w/Kits	MTOT06
CV Material Summary w/Kits (Grouped)	MTOT07
CV Material Summary w/Kits (Grouped Optimized)	MTOT08
CV Material Manager list	MCL002
CV Report Template	TEMP01
CV Door List	DLP006
Razergauge - Fence ONLY	

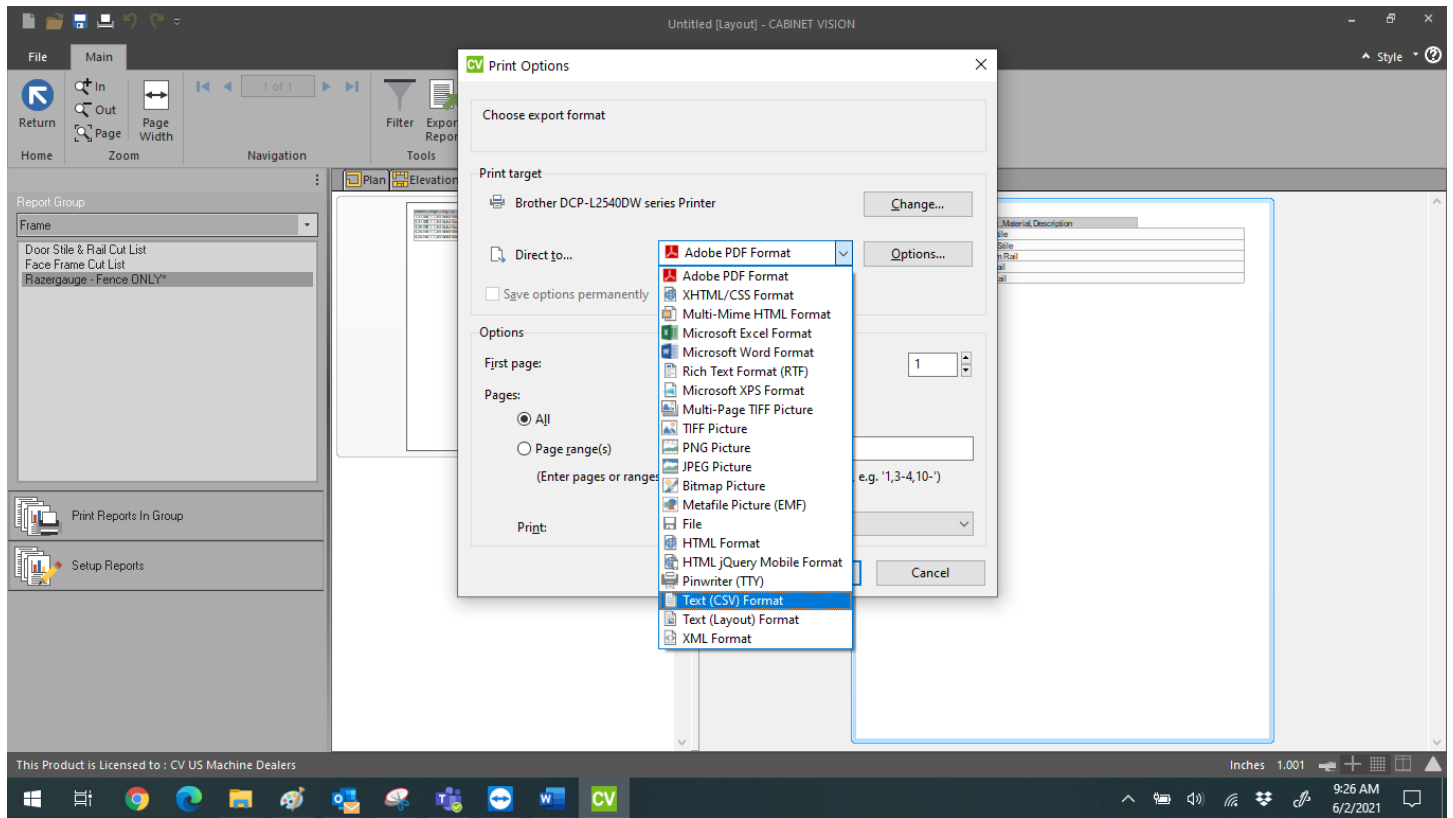
Now click on the Frame button shown here and this will activate the report under the Frame category in your report Center:



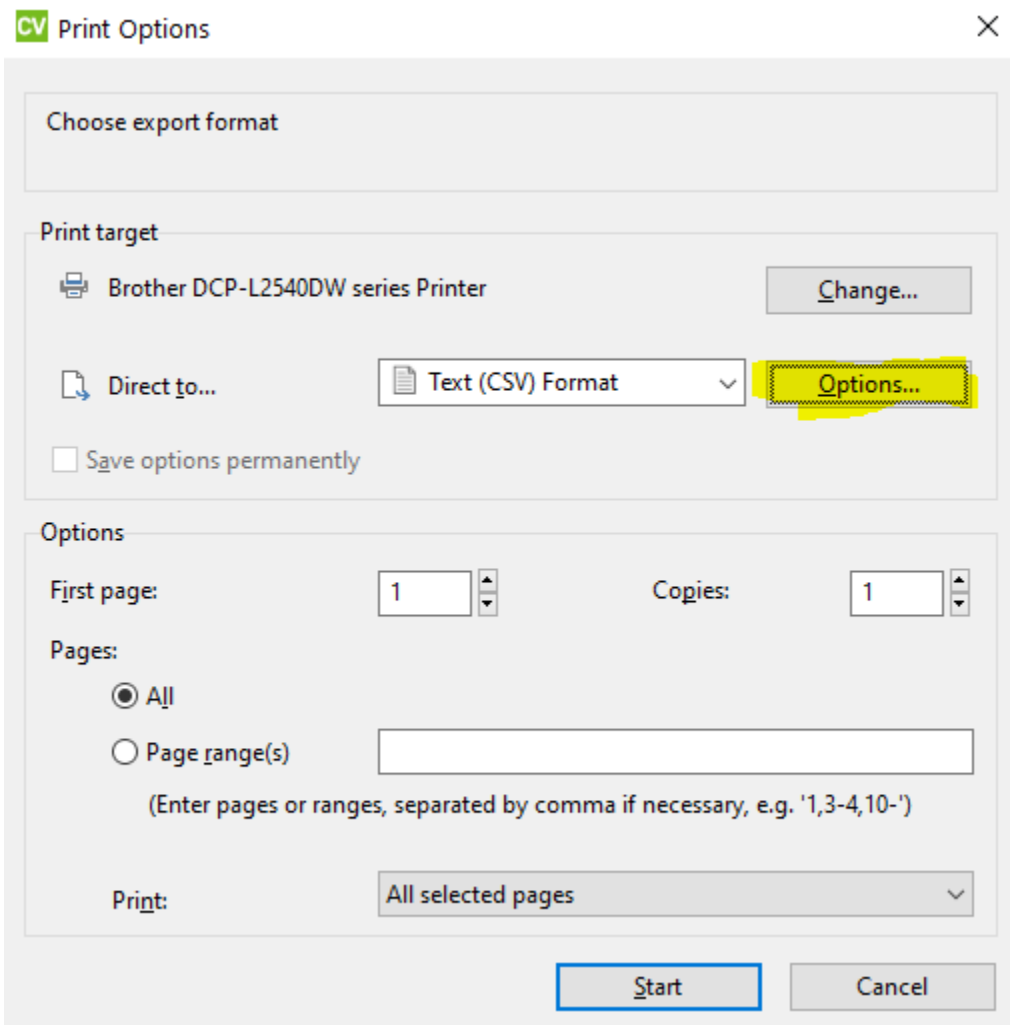
Select Frame and click on the Razorgage report:



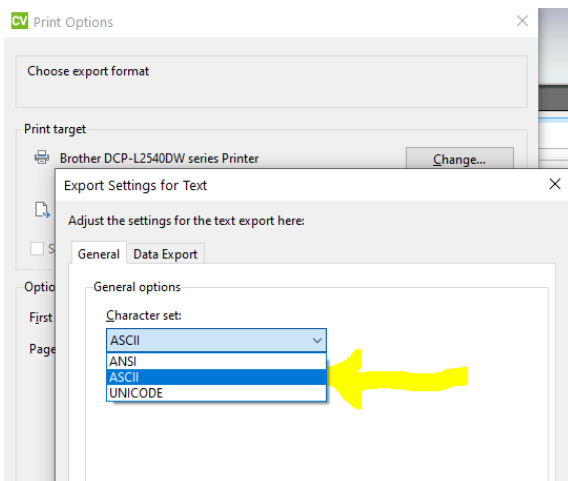
Next, click on the Export Report button and select Text(CSV)



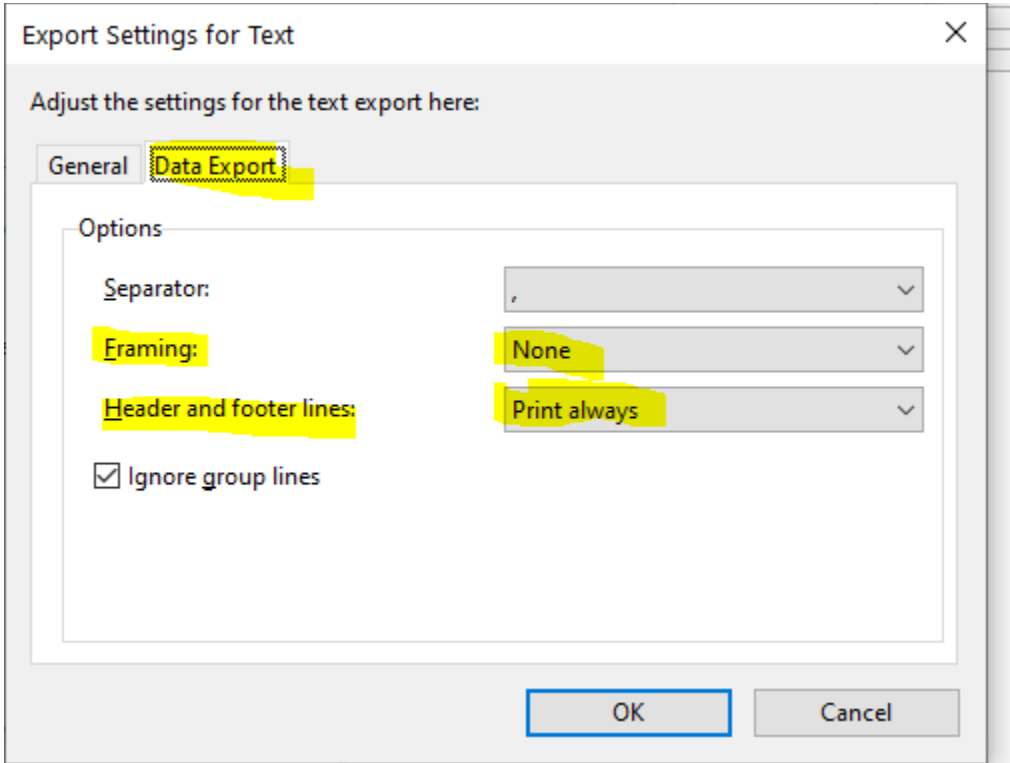
Next select the Options Button:



Then select ASCII from this pull down menu:



Then Select the Data Export Tab and make sure your sections match these:



Then Click the Start Button to name it and select directory of where you want to send the named file.

