

RAZORGAGE

OPTIONS & ACCESSORIES

FACE FRAME SCRIBE



Speed up your assembly process

Minimize mistakes and rework

**Reduce the skill level needed by your
face frame assembler**

How it works:

1. Trim the end of your material
2. Measure the length to the next defect
3. Enter that length and the software creates a list of parts that will make optimal use of that length & move the positioner to the first length on the list.
4. After you cut the part, the positioner will move to the first scribe location.
5. Pull the **Face Frame Scribe** across your part to mark the one side of the joint location.
6. The positioner will then move the part to the next scribe location.
7. Again, you pull the Face Frame Scribe across your part to mark the other side of the joint location.
8. After all scribe locations have been marked for that part, repeat the process for the next part.

BETTER BY DESIGN

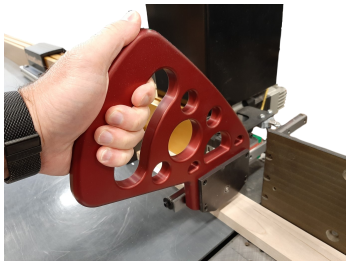
With the Face Frame Scribe for AutoList, you can manually scribe layout location lines for face frames, so that you know where to join them after you're done cutting the parts

Whether you own a RazorGage ST or you are buying a new one, It's easy to add the Face Frame Scribe package to help improve your operations immediately



Face Frame Scribe

Better Software / Hardware Option



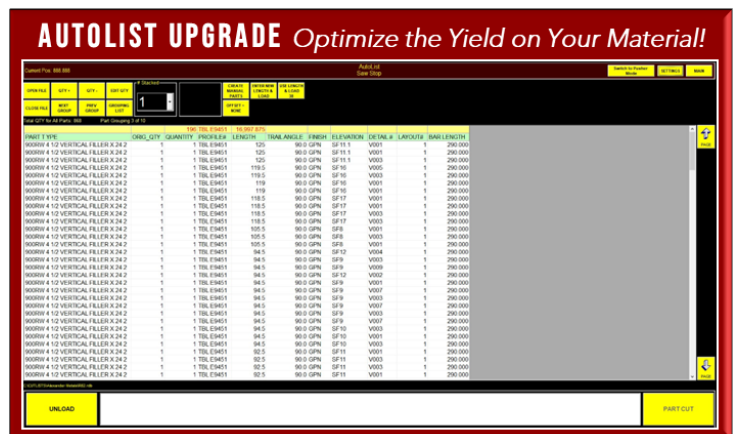
The Face Frame Scribe package can be included on new RazorGage STs with AutoList Optimizing Software and it can easily be added to existing RazorGage PC based ATs and RazorGage ST / AutoList systems. The package includes the software and the scribing tool.

The following will provide some basic information about the AutoList Optimizing Software, RazorGage AT (PC Based) and the RazorGage ST Automatic Saw Measuring System.

Autolist

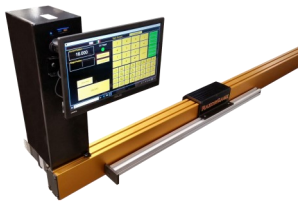
Better Software

The popular & powerful AUTOLIST Screen calculates optimal cutting solutions to maximize yield on your valuable material. AutoList can be mapped to your cutlist layout. Quantities can be multiplied to accommodate today's schedule. As a stop, just touch a line item and the RazorGage moves to position. Pressing the PART CUT button decrements quantity. Items are crossed off when the quantity reaches zero. Enter available clear length for an optimized solution. Switch between pusher & stop any time. Include the Tool Safe Sensor to automate the operation!



RazorGage

Automatic Saw Measuring System



ST RazorGage ST Automatic Saw Measuring System is at the heart of our product line.

Whether you use the ST as an automatic pusher or a measuring stop, this digital measuring fence can be used with a chop saw, upcut saw, downcut saw, drill press, haunching, notching and punching machines.

When looking to improve the output and efficiency for your operations, the RazorGage ST offers the highest degree of accuracy, repeatability and long-lasting dependability.

This system features a hi-performance motion controller that reacts quickly to jams, eliminating stretched belts. Includes a 5 year belt warranty.

The carriage assembly features a Hiwin hardened & ground, linear bearing rail with 2 recirculating ball bearing blocks just like you see on CNC machining centers for near friction-free motion, maximum rigidity, accuracy and long life.



AT The RazorGage AT was the original RazorGage which was manufactured from 2001 to 2010. When you add the current version of AutoList to the PC based version of the AT, the Face Frame Scribe can be added.



RazorGage - Technical Services, Inc. - 57006 241st Street, Ames, IA 50010 - P(515) 232-3188

For detailed information, videos, & manuals, visit www.razorgage.com