

# RAZORGAGE

AUTOMATIC SAW SYSTEMS

## ANGLEMASTER AUTOMATED ANGLE SAW SYSTEM

## BETTER BY DESIGN



Our saw systems  
are built to  
provide durable,  
easy-to-operate  
cutting systems that  
are powerful, safe  
and can improve  
operating efficiencies  
while reducing waste



[WWW.RAZORGAGE.COM](http://WWW.RAZORGAGE.COM)

515.232.3188 • [Sales@RazorGage.com](mailto:Sales@RazorGage.com)

# Anglemaster Saw System

*Automatic Saw Systems*



The [RazorGage AngleMaster](#) is a semi-automatic miter saw fence system that automatically adjusts to cut your leading and trailing angle. The AngleMaster angle saw software with integrated AutoList combines with the computerized miter saw hardware to enable effortless, accurate angle cutting.

The operator selects a cutlist from those downloaded from the office or manually enters the leading and trailing angles, length, & width, required for a single part. The [RazorGage positioner](#) advances the material and rotates the saw to the correct leading angle. The operator makes sure the clamps are adjusted correctly, cycles the saw, clears any small jamb-prone drops from the table and clicks DONE on the hi-resolution touchscreen. The RazorGage positioner then advances the material and rotates the saw to make the trailing edge cut. Once positioning of material and blade is complete the operator makes sure the material is against the fence and the pusher, engages the clamps, and cycles the saw.

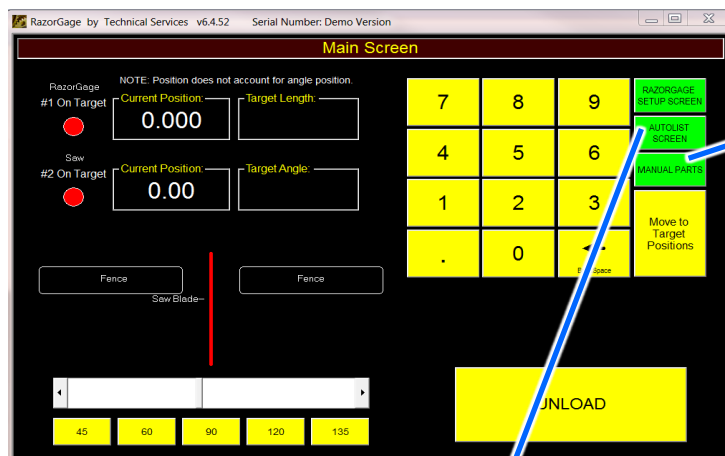
At RazorGage, safety is our top priority. To use the AngleMaster computerized miter saw, the operator must clear each cut part and drop before the machine will advance the material for the next cut. Other safety features include the two-hand anti-tie down buttons. After ensuring that the clamps are not in the path of the saw blade and the blade has automatically rotated to the proper angle, the operator uses the two-hand anti-tie down buttons to cycle the saw.

## FEATURES

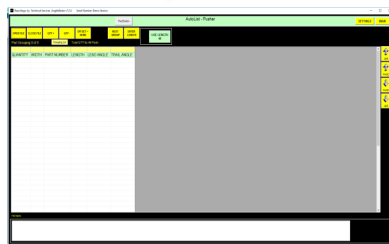
- ♦ Windows Tower PC operation on a large, color hi-resolution touchscreen monitor
- ♦ Download cutlists directly to the RazorGage AngleMaster computer via Wi-Fi or wired Ethernet cable
- ♦ Store thousands of cutlists on the computerized miter saw software. Optimize cuts to maximize yield
- ♦ Works with any label printer that supports Windows software
- ♦ AngleMaster Angle Saw System comes with a PVC table top. Optional steel or PVC rollers are available
- ♦ 2 horizontal and 2 vertical pneumatic clamps
- ♦ Blade mist lubrication standard for cutting aluminum

# Anglemaster Saw System *Better Software*

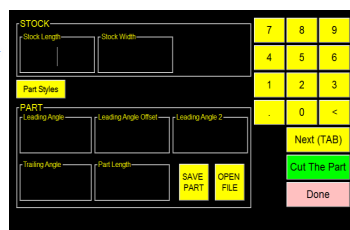
The RazorGage ST with AutoList software and the AngleMaster software, is integrated into all RazorGage AngleMaster semi-automatic miter saws.



The **AutoList** screen offered in the AngleMaster software, allows you to open a cutlist, enter the length of your stock, and then it will find the parts in the cutlist that best utilize the available material and create a cutting solution. Press GO and the RazorGage positioner will advance the material to the trim cut, then to each subsequent location, adjusting the angle of the saw as needed to cut the parts to the required leading and trailing edge angles and length.

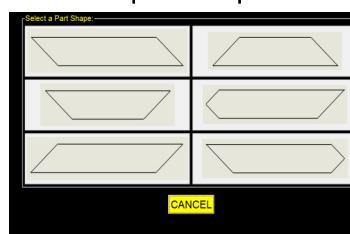


To cut manual parts, click the **MANUAL PARTS** button on the Main Screen and then enter the



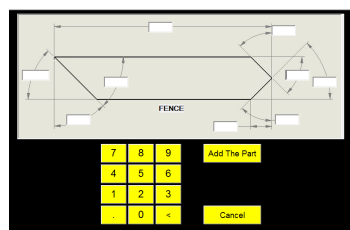
stock length and the actual stock width, of the material you're loading into the machine. Click **PART STYLES**.

The **SELECT A PART SHAPE** screen will appear. Click the part shape that matches your part and



enter the angles and length on the drawing. The drawing has multiple dimensioning schemes to describe each feature.

Just enter one value to describe each angle. Leave the unused boxes blank. Click **ADD THE PART** and the **MANUAL PARTS SCREEN**



will return with all the information filled out. Click **CUT THE PART** and follow the onscreen prompts.

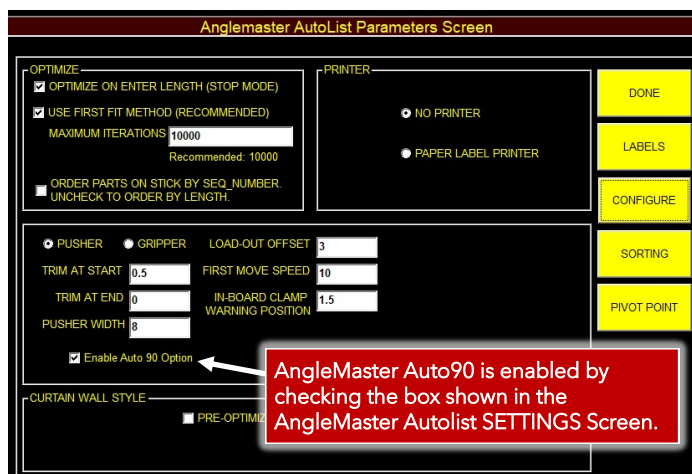
## ANGLEMASTER AUTO90 PACKAGE

Other saw manufacturers may try to conceal this fact, but the reality is that problems occur when trying to cut angled parts in an automatic pusher mode. In most applications, 80% of the parts going through the saw are cut at 90°. Parts cut at other angles can cause jams and other issues.

We developed the AngleMaster Auto90 angle saw package to address the issues associated with cutting materials at angles other than 90°. Unlike other saws that cut angles, the AngleMaster with Auto90 package is designed to prevent jams. So, how does it work?

- Upon opening the cutlist, the software automatically sorts the parts into groups.
- When cutting a group in which all the angles are 90°, the AngleMaster Auto90 runs that group in full auto mode.
- When there are parts with different angles in a group, it runs in semi-auto mode so that the operator can clear pesky drops prone to jamming the machine.

*Please note:* AngleMaster Auto90 package does not come standard with AngleMaster angle saw systems. Please let us know if you are interested in purchasing this upgrade to your AngleMaster system.



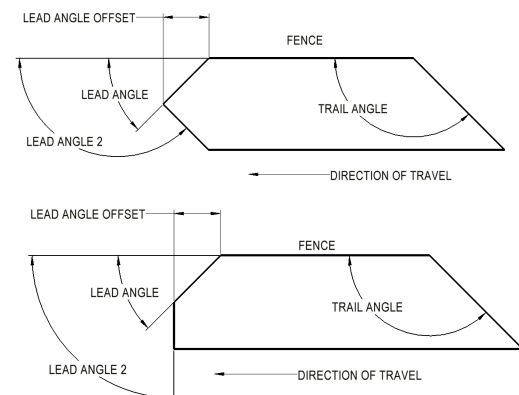
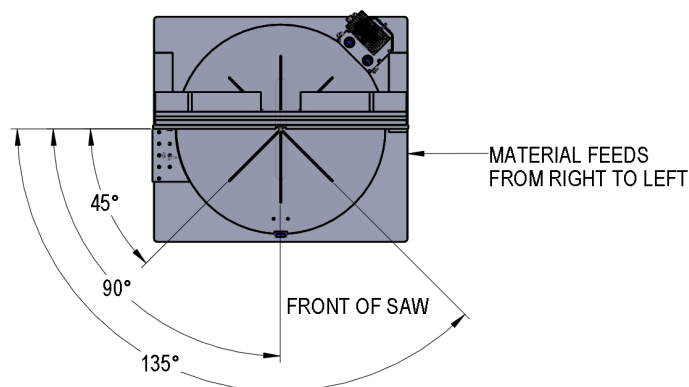
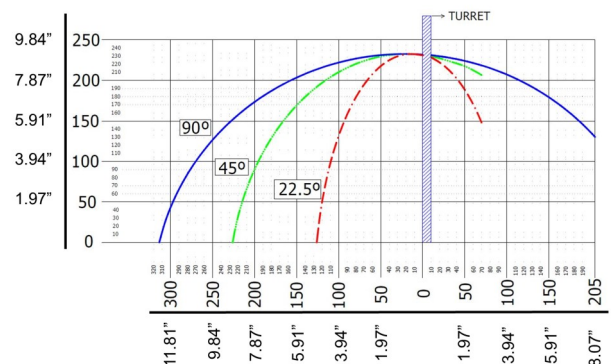


# Anglemaster Saw System *Specifications*

<b>Angle Cutting Range</b>	22° to 160°
<b>Power Requirements</b>	5.5 HP - 230 or 460 VAC, 3-phase (Must Specify)
<b>Dust Collection</b>	4.75" O.D. diameter port (120.65mm) requiring 600 cfm
<b>Compressed Air</b>	Requires 80 - 120 psi (5.5 - 8.27 bar) at 5 cfm (0.14m <sup>3</sup> )
<b>Motor RPM</b>	3000
<b>Blade</b>	600mm x 132T; 50mm arbor
<b>Push Force</b>	200 lbs at 10 inches per second
<b>Maximum Push Speed</b>	40 inches per second
<b>Stock Length Capacity</b>	Up to 56 feet

Cutting Capacity			
Material Shape	Material Thickness	90° Cuts	45° Cuts
Round Tube	7"	Yes	No
	6"	Yes	Yes
Round Solid	4"	Yes	No
	4.75"	Yes	Yes
Square Tube	6"	Yes	No
	4.75"	Yes	Yes
Rectangular Tube	11.75" x 5"	Yes	No
	5.75" x 4.75"	Yes	Yes

SUP-600 CAPACITY CHART



## *System Options & Accessories*

- ◆ Articulated Pusher Mounted Gripper
- ◆ Standard or Heavy Duty Gripper
- ◆ Tables – Heavy Gauge, Powder Coated Steel
  - 34.5" to 44.5" in height (*adjustable*)
  - Surfaces – 1/4" Solid PVC, PVC Rollers, Steel Rollers

