

# RAZORGAGE CHOP SAW TABLE

Shown with CTD Chop Saw  
and RazorGage RGxT  
*(Sold Separately)*

## BETTER BY DESIGN

*Easily attach  
a RazorGage  
RGxT or RG3  
Positioner*

### FEATURES

- ◆ Works with all brands of industrial chop saws
- ◆ Heavy duty, welded construction from 11 gauge steel construction
- ◆ Powder coat finish to fight rust and abrasion
- ◆ Saw platform easily adjust to allow perfectly flat transition from the table to saw
- ◆ Table height adjusts from 34.5" to 44.5"

Provides the sturdy  
construction and  
adjustability required  
for heavy production  
environments.



[WWW.RAZORGAGE.COM](http://WWW.RAZORGAGE.COM)

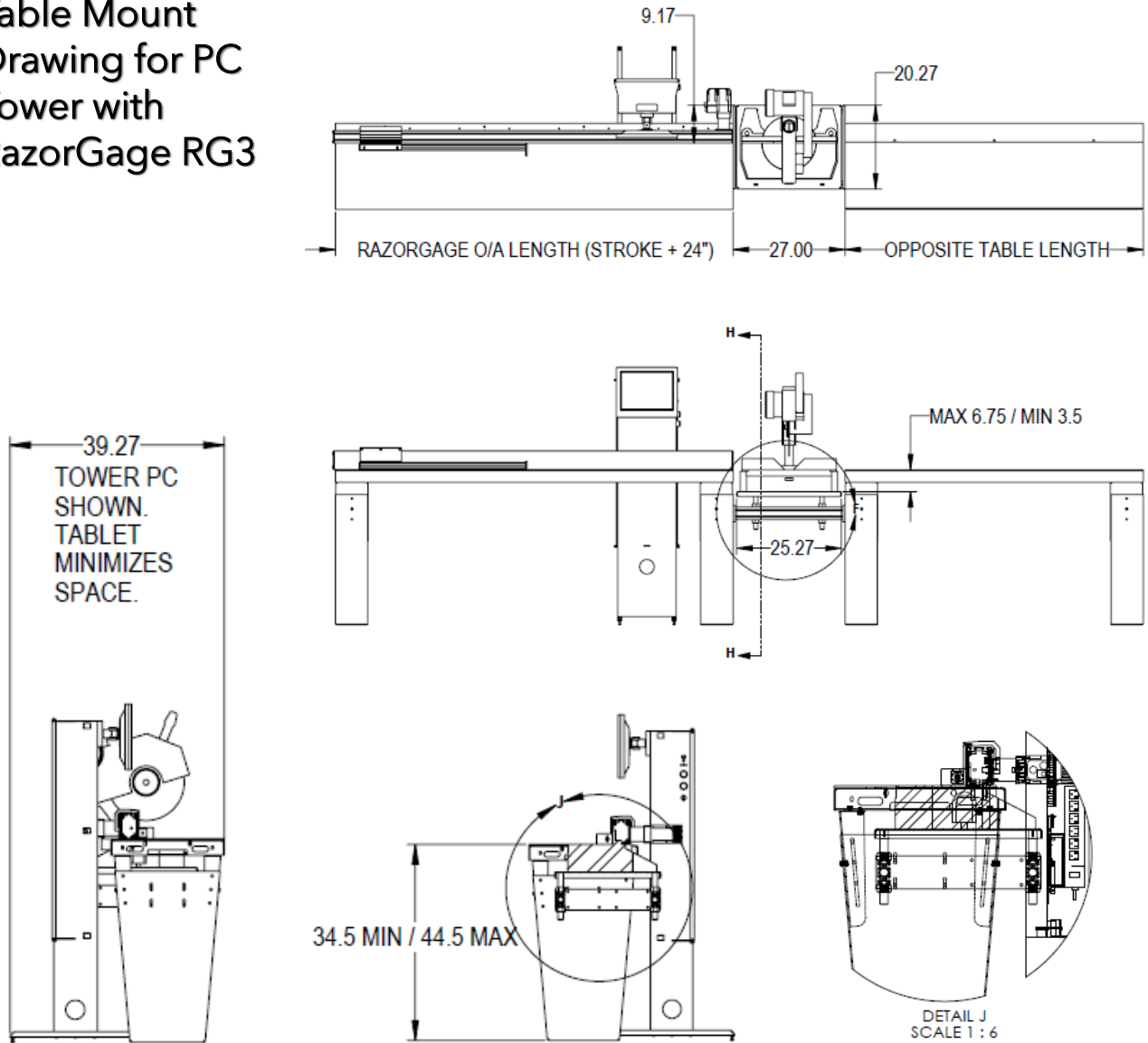
515-232-3188 | [Sales@RazorGage.com](mailto:Sales@RazorGage.com)

**RAZORGAGE**

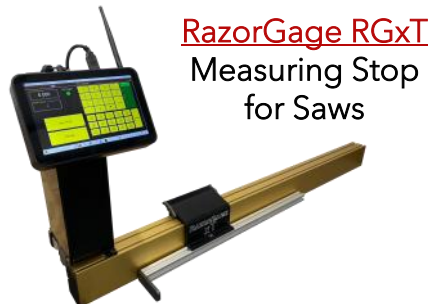
# CHOP SAW TABLE

*Technical & Options*

Table Mount  
Drawing for PC  
Tower with  
RazorGage RG3



## *Options & Accessories*



**RazorGage RG3**  
Automatic Saw  
Measuring System

